

FIXED SLOT DIFFUSER TE600 • TE700

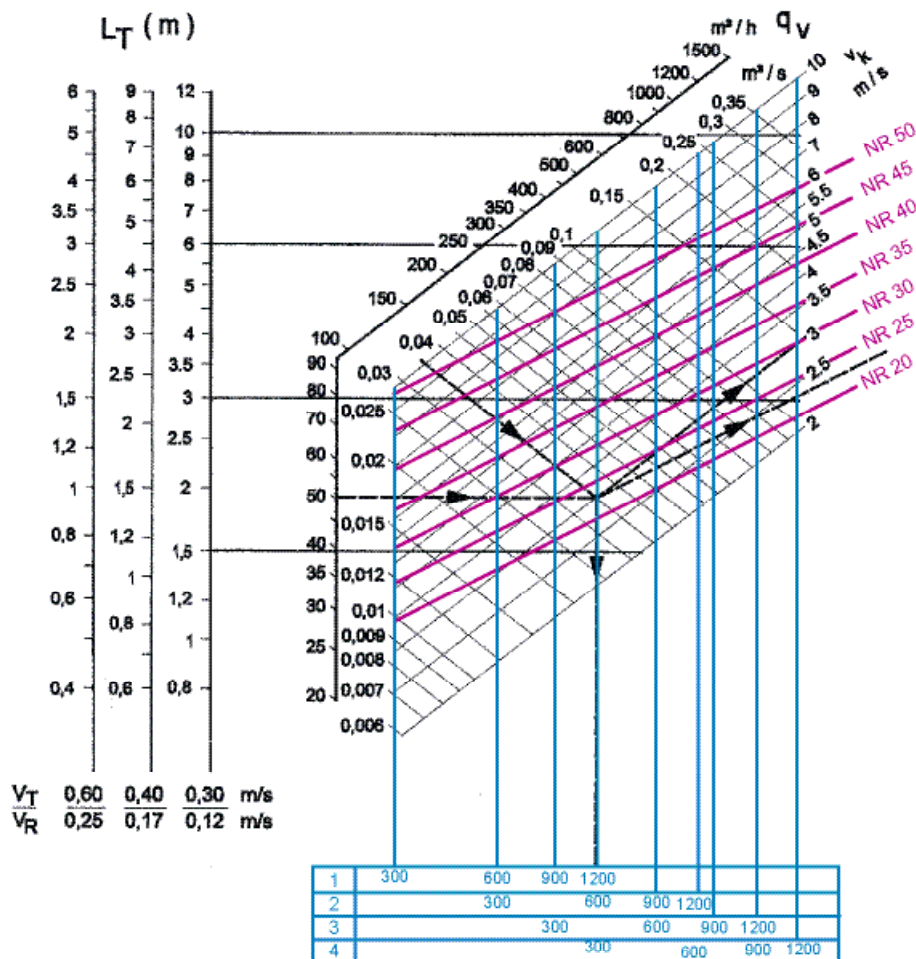
Selection diagram - supply

Type TE600 • TE700

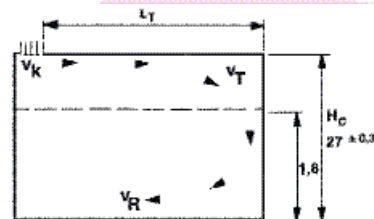
- with ceiling effect

Valid for cooling up to $\Delta t_s = -8$ K

Valid for heating up to $\Delta t_s = +20$



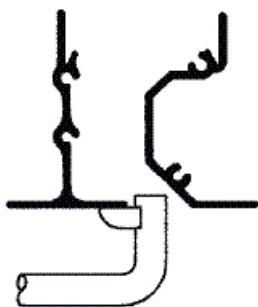
ceiling one-way exhaust pattern



ceiling two-way exhaust pattern

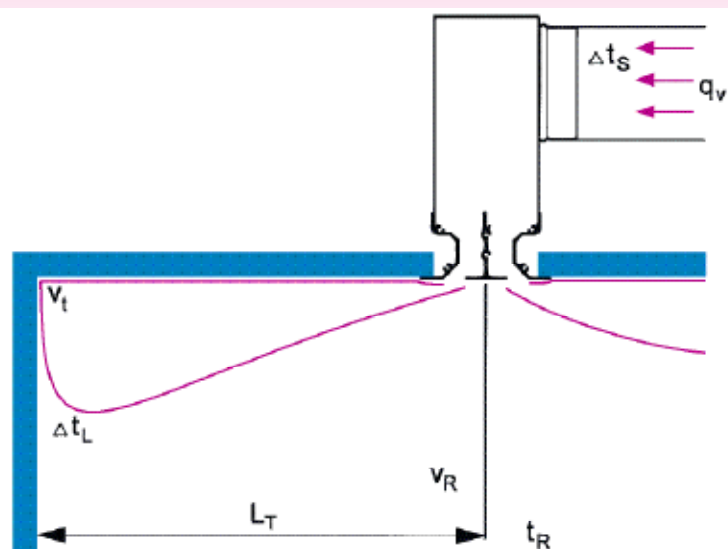


Air flow rate measurement - supply



A _k -values (m ² /m)	
Number of slots	A _k
1	0,0097
2	0,0195
3	0,0292
4	0,0390

Example



Selection data:

- Air flow rate $q_v = 0,035 \text{ m}^3/\text{s}$
- Throw $L_T = 1,9 \text{ m}$ at $v_T = 0,3 \text{ m/s}$

Solution:

- Diffuser with - 1 slot ($L = 1200 \text{ mm}$)
- 2 slots ($L = 600 \text{ mm}$)
- 4 slots ($L = 300 \text{ mm}$)
- with 1 supply direction
- Supply air velocity $v_k = 3 \text{ m/s}$
- Noise level NR 23
- Total pressure loss with damper completely open: $\Delta P_t = 4,7 \text{ Pa}$

Pressure loss TE600 / TE700

with damper completely open

