

SLS

ALUMINIUM ADJUSTABLE SLOT DIFFUSER WITH FLANGE



CEILING



3 WAY THROW



2 WAY THROW



1 WAY THROW



LINEAR



SUPPLY



EXHAUST



ADJUSTABLE



LINEAR

TECHNICAL INFORMATION

| | | |
|--------------|-------------------------------|---|
| APPLICATION | Airflow direction | Lateral, axial, adjustable |
| | Airflow type | Linear, exhaust or supply |
| CONSTRUCTION | Shape | Linear |
| | Min. Length | 300mm |
| | Max. length | 2000mm |
| | Available steps in length | 1mm |
| | Number of slots | 1,2,3,4,5,6 |
| | Flange size | 20mm |
| | Slot width | 25mm |
| | Installation depth | 34mm |
| MATERIAL | Panel width (SLS_P) | Standard 300mm |
| | Standard material | Extruded aluminium |
| | Standard finishing | Satin anodized 11µm |
| | Product finishing options | Powder coating RAL |
| | Deflectors | powder coated extruded aluminium |
| | Deflector fixation piece | POM |
| | Panel | Powder coated steel sheet metal |
| MOUNTING | Mounting options SLS | With mounting bracket on SPS plenum box, fixed mounting on SPB plenum box |
| | Mounting options SLS on panel | Fixed mounting on SPP plenum box |
| PLENUM | Material | Galvanised (275g/m ²) steel sheet, PP/TPE spigot |
| | Optional insulation | Melamine 6mm |
| | Spigot | Class D spigot with double lip seal |
| | Volume control | Optional perforated volume flow control disk inside the spigot |
| | Mounting options | Mounting eyes (Ø7mm) standard, mounting brackets available upon request |

VARIANTS

SLS, SLS_P

The adjustable slot diffuser type SLS is suitable for the supply and exhaust of cooled and heated air. Each slot (available from 1 to 6 slots) is individually adjustable and is equipped with 2 specially designed discrete deflectors. This results in an ideal air flow pattern that can be adjusted by 180° (vertical and horizontal air flow). Available in several lengths, in multiple middle and end sections to create a linear diffuser up to any length or in panel version for installation in modular system ceilings.

Sleek design with discrete aluminium deflectors (Slot width 25mm)

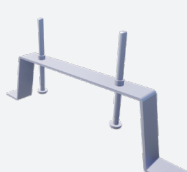
Easy mounting with mounting brackets (in combination with plenum type SPS)

Wide temperature range for both heating and cooling

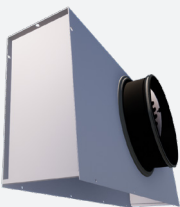
ACCESSORIES



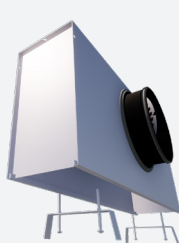
SPS0



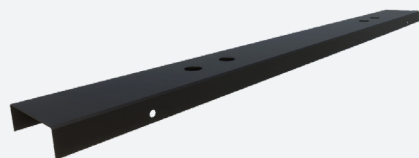
SL000



SPB



SPS



BOBSL

QUICK SELECTION

| Supply Q _v [m ³ /h] | | L [mm] | | | |
|---|----------------|--------|------|------|------|
| | L _w | 600 | 1000 | 1500 | 2000 |
| SLS-1 | 25 dB(A) | 64 | 99 | 138 | 174 |
| | 35 dB(A) | 91 | 140 | 195 | 246 |
| SLS-2 | 25 dB(A) | 137 | 212 | 296 | 374 |
| | 35 dB(A) | 192 | 296 | 414 | 524 |
| SLS-3 | 25 dB(A) | 166 | 256 | 356 | 450 |
| | 35 dB(A) | 235 | 362 | 504 | 637 |
| SLS-4 | 25 dB(A) | 206 | 320 | 449 | 569 |
| | 35 dB(A) | 286 | 442 | 619 | 786 |
| SLS-5 | 25 dB(A) | 263 | 406 | 567 | 718 |
| | 35 dB(A) | 368 | 568 | 793 | 1004 |
| SLS-6 | 25 dB(A) | 348 | 535 | 744 | 939 |
| | 35 dB(A) | 494 | 760 | 1058 | 1336 |

EFFECTIVE AIR DISCHARGE AREA

| Supply A _k [m ² /m] | SLS-1 | SLS-2 | SLS-3 | SLS-4 | SLS-5 | SLS-6 |
|---|--------|--------|--------|--------|--------|--------|
| | 0.0152 | 0.0246 | 0.0339 | 0.0432 | 0.0623 | 0.0748 |

PRODUCT KEY

SLOT DIFFUSER WITH FLANGE SLS

| S | L | S | 1 | 2 | - | - | 1 | 2 | 0 | 0 | 0 | 0 | 0 |
|---|---|---|---|---|---|---|---|---|--|---|---|---|---|
| | | | | | | | Slot length L (mm): From 300 to 2000mm, per 1mm | | Panel size L2 (mm): From 350 to 2055, per 1mm | | | | |
| | | | | | | | -: Naturel anodised (not for P, Z and C) F: Coated | | | | | | |
| | | | | | | | -: Standard C: Corner section 90° (600x600mm) E: End piece M: Intermediate piece P: Panel with 4 raised edges of 10 mm Z: Panel with 2 sides fine line 5/8 on the short side and 2 raised edges of 10 mm on the long side Q: Square panel with 4 raised edges of 10 mm Y: Square panel with 4 sides fine line 5/8 | | | | | | |
| | | | | | | | 1: 1 slot (1 to 6 slots) | | | | | | |
| | | | | | | | 0: Without deflectors, black spacers 1: Black deflectors RAL9005 MATT, black spacers 2: White deflectors RAL9010, white spacers 3: White deflectors RAL9016 MATT, white spacers 4: White deflectors RAL9003 MATT, white spacers 5: Deflectors painted in color by choice, black spacers 6: Deflectors painted in color by choice, white spacers 7: Without deflectors, white spacers | | | | | | |

PLENUM SPS WITH MOUNTING BRACKETS (MOUNTING BRACKETS+SCREWS INCLUDED) FOR SLOT DIFFUSER SLS (EXCEPT PANEL VERSION SLS_P)

| S | P | S | 0 | 2 | - | S | - | - | 0 | 0 | 1 | 6 | 0 | 1 | 2 | 0 | 0 |
|---|---|---|---|---|---|---|---|---|---|---|---|---|---|---|---|---|---|
| | | | | | | | | | | Nominal diameter (mm): 80, 100, 125, 160, 200, 250, or 315 Slot length <=1200: 1 diam- eter Slot length>=1201: 2 diam- eters | | | | Slot length L (mm): From 300 to 2000mm, per 1mm | | | |
| | | | | | | | | | | 0: without mounting straps 1: with mounting straps | | | | | | | |
| | | | | | | | | | | - : without damper D : with damper | | | | | | | |
| | | | | | | | | | | -: non insulated plenum G: insulated plenum H: half insulated plenum | | | | | | | |
| | | | | | | | | | | S: Side connection | | | | | | | |
| | | | | | | | | | | -: Standard M: Intermediate piece L: End piece left (looking at plenum front into the inlet of the connection collar) R: End piece right (looking at plenum front into the inlet of the connection collar) | | | | | | | |
| | | | | | | | | | | 1: 1 slot (1 to 6 slots) | | | | | | | |

PRODUCT KEY

| PLENUM SPB FOR DIRECT MOUNTING ON SLOT DIFFUSER SLS (EXCEPT PANEL VERSION) | | | | | | | | | | | | | | | | | |
|--|---|---|---|---|---|---|---|---|---|---|---|---|---|---|---|---|---|
| S | P | B | 0 | 2 | - | S | - | - | 0 | 0 | 1 | 6 | 0 | 1 | 2 | 0 | 0 |
| | | | | | | | | | | Nominal diameter (mm): 80, 100, 125, 160, 200, 250, or 315 Slot length <=1200: 1 diam- eter Slot length >=1201: 2 diam- eters | | | | Slot length L (mm): From 300 to 2000mm, per 1mm | | | |
| | | | | | | | | | | 0: Without mounting straps 1: With mounting straps | | | | | | | |
| | | | | | | | | | | -: Without damper D: With damper | | | | | | | |
| | | | | | | | | | | -: Non insulated plenum G: Insulated plenum H: Half insulated plenum | | | | | | | |
| | | | | | | | | | | S: Side connection | | | | | | | |
| | | | | | | | | | | -: Standard L: End piece left (looking at plenum front into the inlet of the connection collar) M: Intermediate piece R: End piece right (looking at plenum front into the inlet of the connection collar) | | | | | | | |
| | | | | | | | | | | 1: 1 slot (1 to 6 slots) | | | | | | | |

| PLENUM SPP FOR DIRECT MOUNTING ON SLOT DIFFUSER SLS_P (PANEL VERSION) | | | | | | | | | | | | | | | | | |
|---|---|---|---|---|---|---|---|---|---|---|---|---|---|---|---|---|---|
| S | P | P | 0 | 2 | - | S | - | - | 0 | 0 | 1 | 6 | 0 | 1 | 2 | 0 | 0 |
| | | | | | | | | | | Nominal diameter (mm): 80, 100, 125, 160, 200, 250, or 315 Slot length <=1200: 1 diam- eter Slot length >=1201: 2 diam- eters | | | | Slot length L (mm): From 300 to 2000mm, per 1mm | | | |
| | | | | | | | | | | 0: Without mounting straps 1: With mounting straps | | | | | | | |
| | | | | | | | | | | -: Without damper D: With damper | | | | | | | |
| | | | | | | | | | | -: Non insulated plenum G: Insulated plenum H: Half insulated plenum | | | | | | | |
| | | | | | | | | | | S: Side connection | | | | | | | |
| | | | | | | | | | | -: Standard | | | | | | | |
| | | | | | | | | | | 1: 1 slot (1 to 6 slots) | | | | | | | |

SLOT DIFFUSER SLS WITH PLENUM SPB (MOUNTED)

| S | L | S | 1 | 2 | - | - | S | - | - | 0 | 1 | 2 | 0 | 0 |
|---|---|---|---|---|---|---|---|---|---|---|---|---|---|---|
| | | | | | | | | | | | Slot length L (mm): From 300 to 2000mm, per 1mm | | | |
| | | | | | | | | | | | 0: Without mounting straps 1: With mounting straps | | | |
| | | | | | | | | | | | -: Without damper D: With damper | | | |
| | | | | | | | | | | | -: Non insulated plenum G: Insulated plenum H: Half insulated plenum | | | |
| | | | | | | | | | | | S: Side connection | | | |
| | | | | | | | | | | | -: Naturel anodised F: Coated | | | |
| | | | | | | | | | | | -: Standard L: End piece left (looking at plenum front into the inlet of the connection collar) M: Intermediate piece R: End piece right (looking at plenum front into the inlet of the connection collar) | | | |
| | | | | | | | | | | | 1: 1 slot (1 to 6 slots) | | | |
| | | | | | | | | | | | 0: Without deflectors, black spacers 1: Black deflectors RAL9005 MATT, black spacers 2: White deflectors RAL9010, white spacers 3: White deflectors RAL9016 MATT, white spacers 4: White deflectors RAL9003 MATT, white spacers 5: Deflectors painted in color by choice, black spacers 6: Deflectors painted in color by choice, white spacers 7: Without deflectors, white spacers | | | |

SLOT DIFFUSER SLS_P WITH PLENUM SPP (MOUNTED)

| S | L | S | 1 | 2 | P | F | S | - | - | 0 | 1 | 2 | 0 | 0 | 1 | 2 | 4 | 2 |
|---|---|---|---|---|---|---|---|---|---|---|---|---|---|---|--|---|---|---|
| | | | | | | | | | | | Slot length L (mm): From 300 to 2000mm, per 1mm | | | | Panel size L2 (mm): From 350 to 2055, per 1mm | | | |
| | | | | | | | | | | | 0: Without mounting straps 1: With mounting straps | | | | | | | |
| | | | | | | | | | | | -: Without damper D: With damper | | | | | | | |
| | | | | | | | | | | | -: Non insulated plenum G: Insulated plenum H: Half insulated plenum | | | | | | | |
| | | | | | | | | | | | S: Side connection | | | | | | | |
| | | | | | | | | | | | F: Coated | | | | | | | |
| | | | | | | | | | | | P: Panel with 4 raised edges of 10 mm Z: Panel with 2 sides fine line 5/8 on the short side and 2 raised edges of 10 mm on the long side Q: Square panel with 4 raised edges of 10 mm Y: Square panel with 4 sides fine line 5/8 | | | | | | | |
| | | | | | | | | | | | 1: 1 slot (1 to 6 slots) | | | | | | | |
| | | | | | | | | | | | 0: Without deflectors, black spacers 1: Black deflectors RAL9005 MATT, black spacers 2: White deflectors RAL9010, white spacers 3: White deflectors RAL9016 MATT, white spacers 4: White deflectors RAL9003 MATT, white spacers 5: Deflectors painted in color by choice, black spacers 6: Deflectors painted in color by choice, white spacers 7: Without deflectors, white spacers | | | | | | | |

PRODUCT KEY

DUMMY PLATE BOBSL FOR SLOT DIFFUSER SLS (MOUNTING IN COMBINATION WITH MOUNTING BRACKETS SL)

| | | | | | | | | | | |
|---|---|---|---|---|---|---|--|---|---|---|
| B | 0 | B | S | L | 0 | 2 | 1 | 2 | 0 | 0 |
| | | | | | | | Length dummy plate (mm): From 20 to 2000mm, per 1mm | | | |
| | | | | | | | 1: 1 slot (1 to 6 slots) | | | |

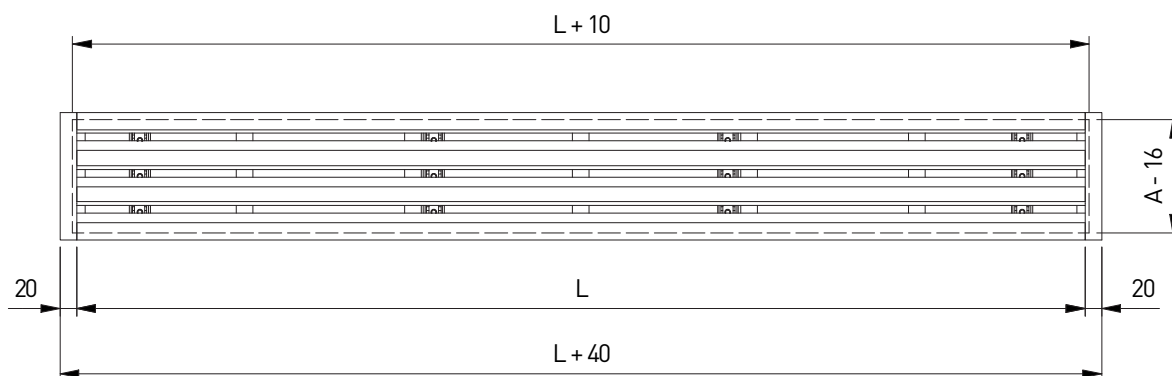
MOUNTING BRACKET SL FOR CEILING MOUNTING SLOT DIFFUSER SLS (WITHOUT PLENUM)

| | | | | | |
|---|---|---|---|---|---|
| S | L | 0 | 0 | 2 | |
| | | | | | 1: 1 slot (1 to 6 slots) Slot length <=1200: 2 brackets Slot length >=1201: 3 brackets |

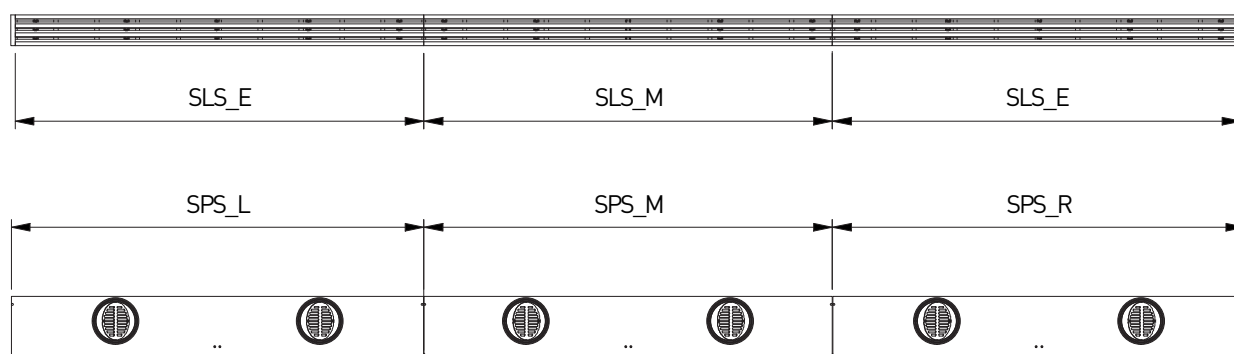
MOUNTING BRACKET SPS FOR MOUNTING SLOT DIFFUSER SLS IN DIY-PLENUM

| | | | |
|-----------------------------|---|---|---|
| S | P | S | 2 |
| 1: 1 slot (1 to 6 slots) | | | |

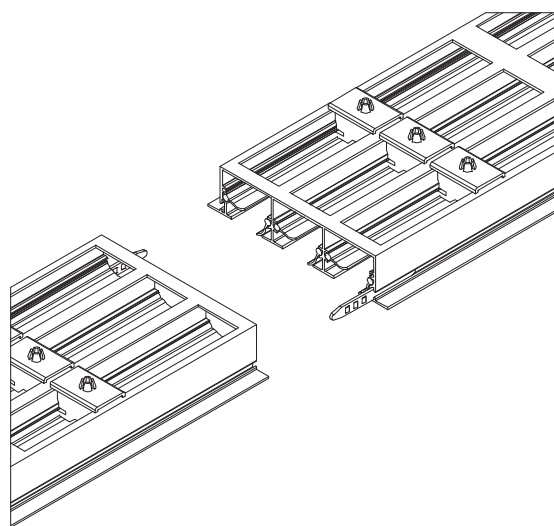
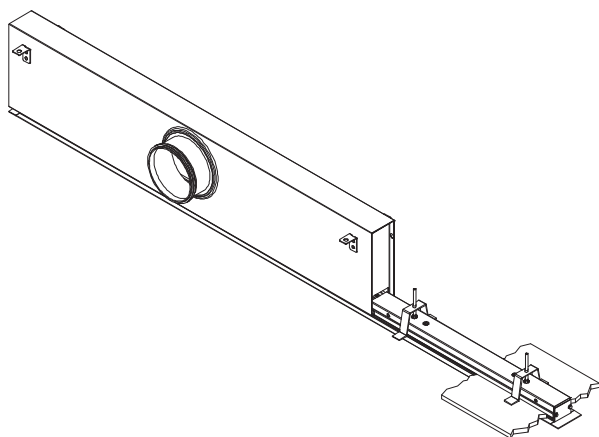
SLS

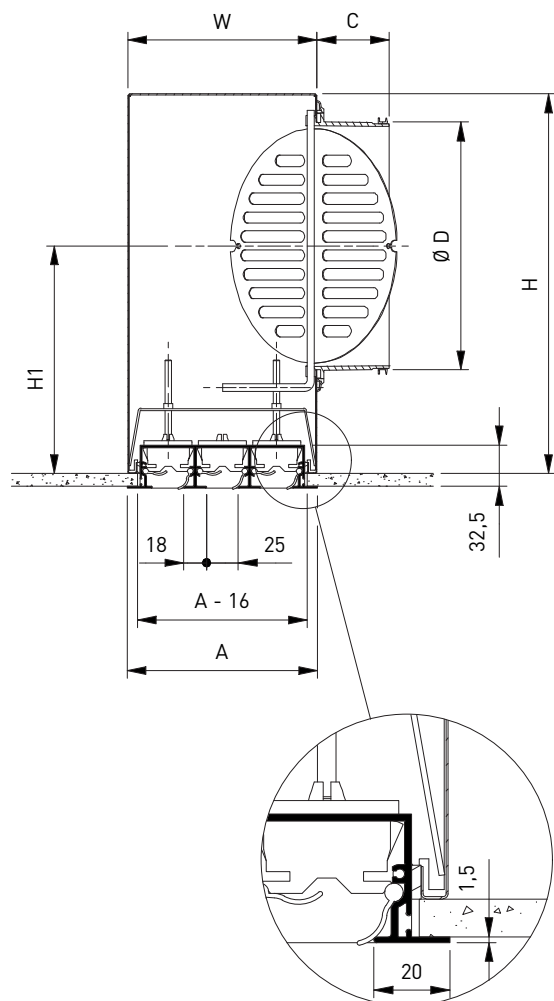
CEILING OPENING: $L+10 \times A-16$ 

LINEAR: END PIECES AND INTERMEDIATE PIECES



SLS11-F/1500
+ SPS01LS--1/125/1000
+ BOBSL01/500
+ SL001 (2x)





DIMENSIONS

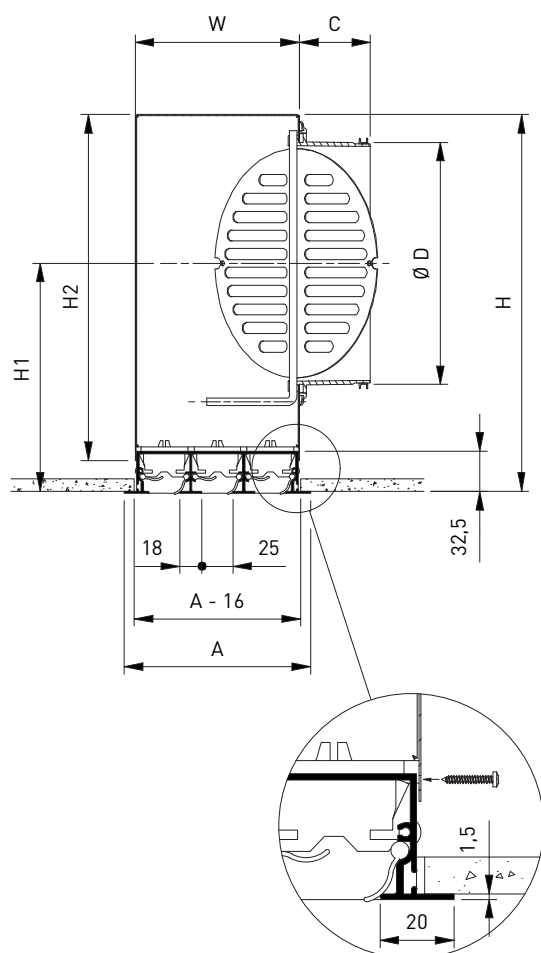
| | Number of slots - SLS + SPS | | | | | |
|-----------|-----------------------------|-----|-----|-----|-----|-----|
| | 1 | 2 | 3 | 4 | 5 | 6 |
| A | 65 | 108 | 151 | 194 | 237 | 280 |
| C | 58 | 58 | 58 | 58 | 78 | 78 |
| ØD | 123 | 158 | 198 | 198 | 248 | 248 |
| H | 200 | 250 | 300 | 300 | 350 | 350 |
| H1 | 118 | 150 | 180 | 180 | 205 | 205 |
| W | 63 | 106 | 149 | 192 | 236 | 278 |

All dimensions in mm

L ≤ 1200: 1 diameter

L ≥ 1201: 2 diameters

SLS + SPB



DIMENSIONS

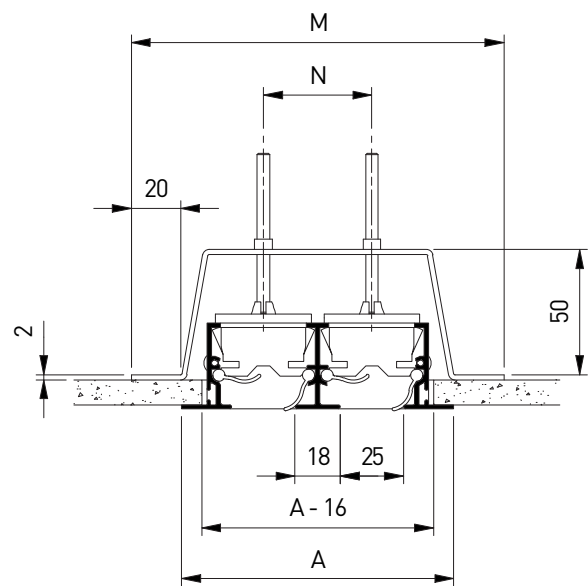
| | Number of slots - SLS + SPB | | | | | |
|-----------|-----------------------------|-----|-----|-----|-----|-----|
| | 1 | 2 | 3 | 4 | 5 | 6 |
| A | 65 | 108 | 151 | 194 | 237 | 280 |
| C | 58 | 58 | 58 | 58 | 78 | 78 |
| ØD | 123 | 158 | 198 | 198 | 248 | 248 |
| H | 205 | 255 | 305 | 305 | 355 | 355 |
| H1 | 123 | 155 | 185 | 185 | 210 | 210 |
| H2 | 180 | 230 | 280 | 280 | 330 | 330 |
| W | 46 | 89 | 132 | 175 | 219 | 262 |

All dimensions in mm

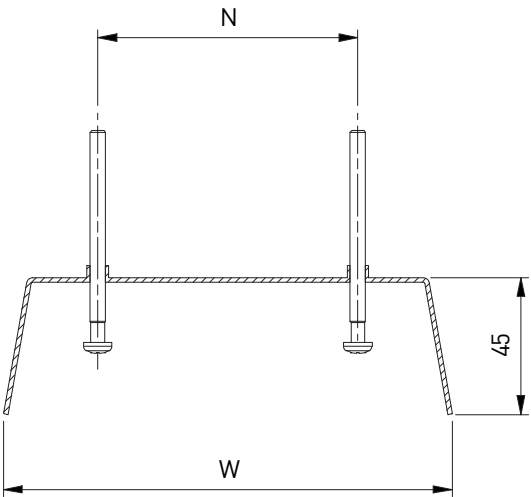
L ≤ 1200: 1 diameter

L ≥ 1201: 2 diameters

SLS12 + SL002



SPS3

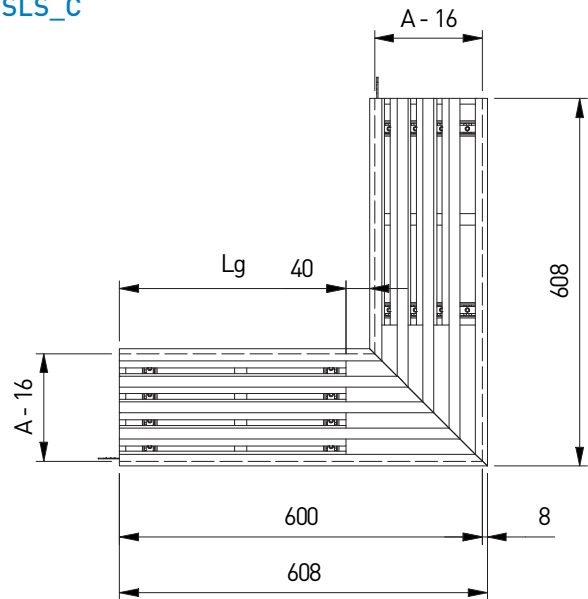


DIMENSIONS

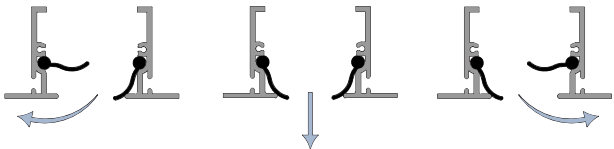
| | Number of slots - SLS | | | | | |
|-----|-----------------------|-----|-----|-----|-----|-----|
| | 1 | 2 | 3 | 4 | 5 | 6 |
| A | 65 | 108 | 151 | 194 | 237 | 280 |
| M | 105 | 148 | 191 | 234 | 277 | 320 |
| N | 0 | 43 | 86 | 129 | 172 | 215 |
| L_G | 504 | 461 | 418 | 375 | 332 | 289 |
| W | 63 | 106 | 149 | 192 | 236 | 278 |

All dimensions in mm
L <= 1200: number of brackets = 2
L >= 1201: number of brackets = 3

SLS_C

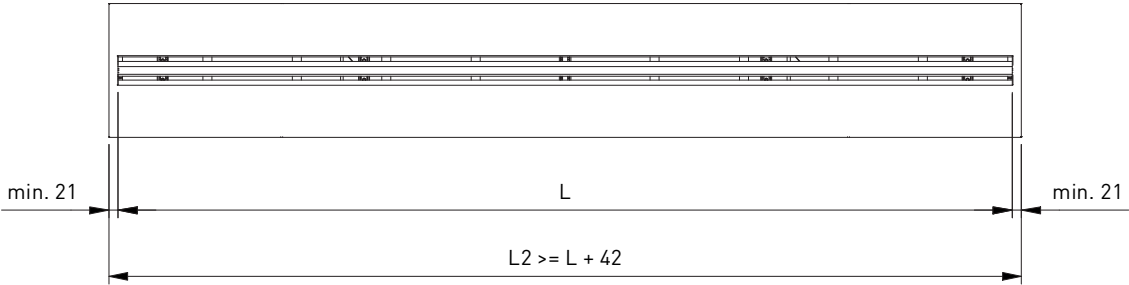


AIRFLOW DIRECTION

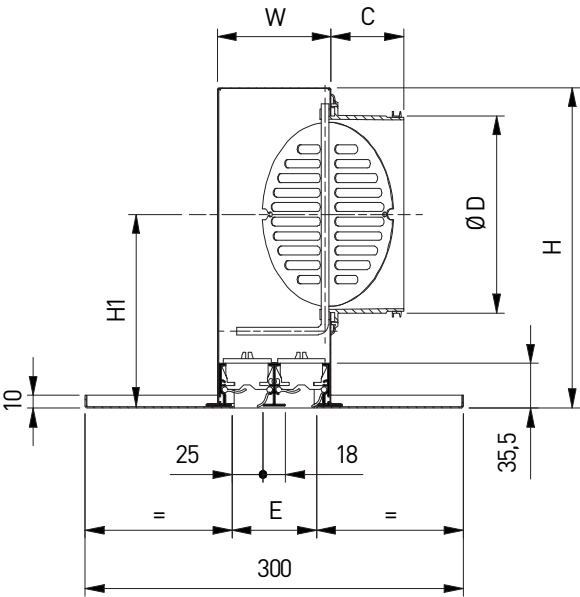
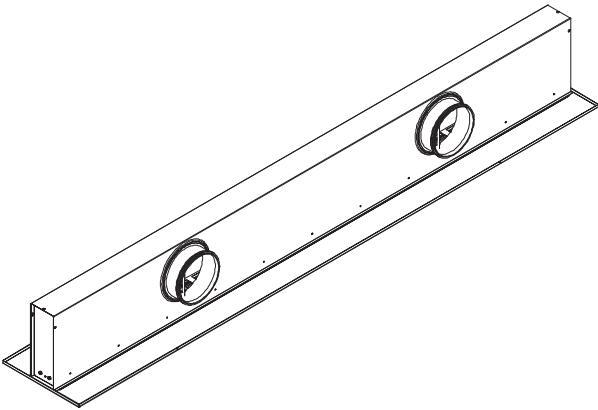


PANEL VERSION

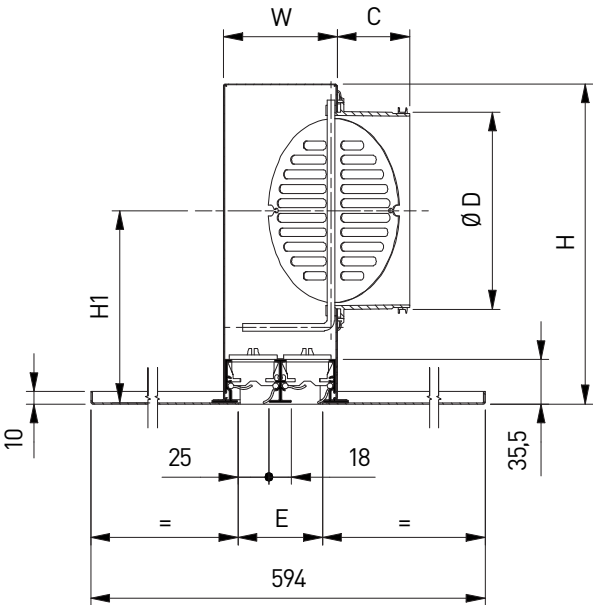
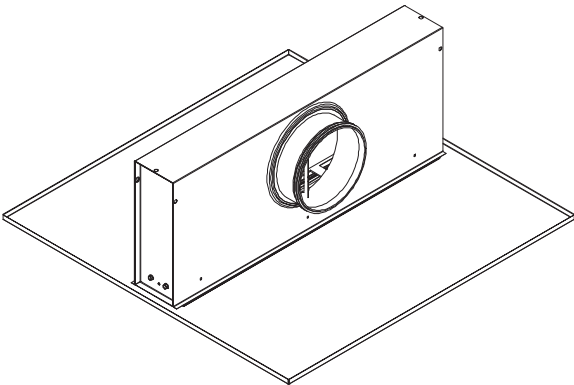
SLS_P



SLS_P + SPP

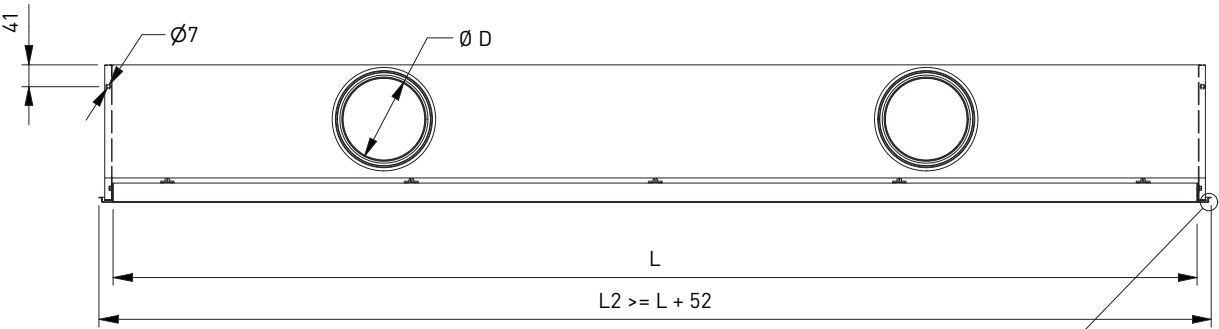
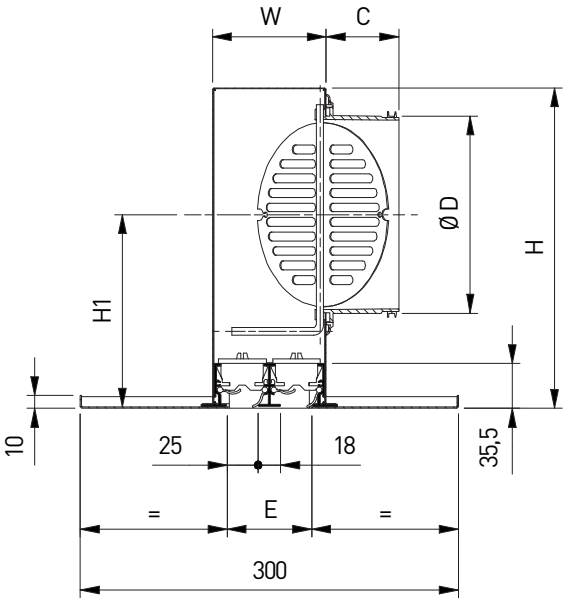
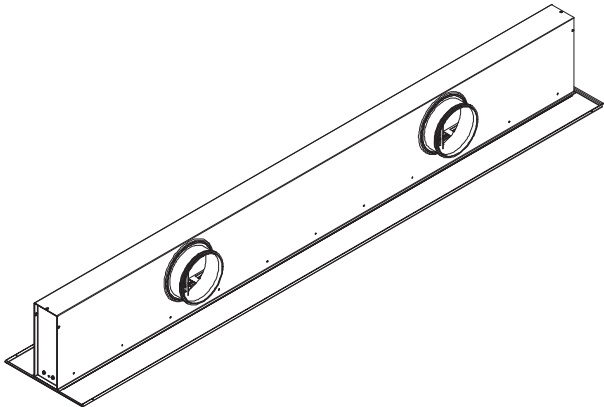


SLS_Q + SPP

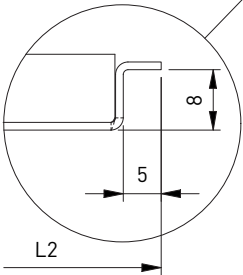


PANEL VERSION WITH FINE LINE

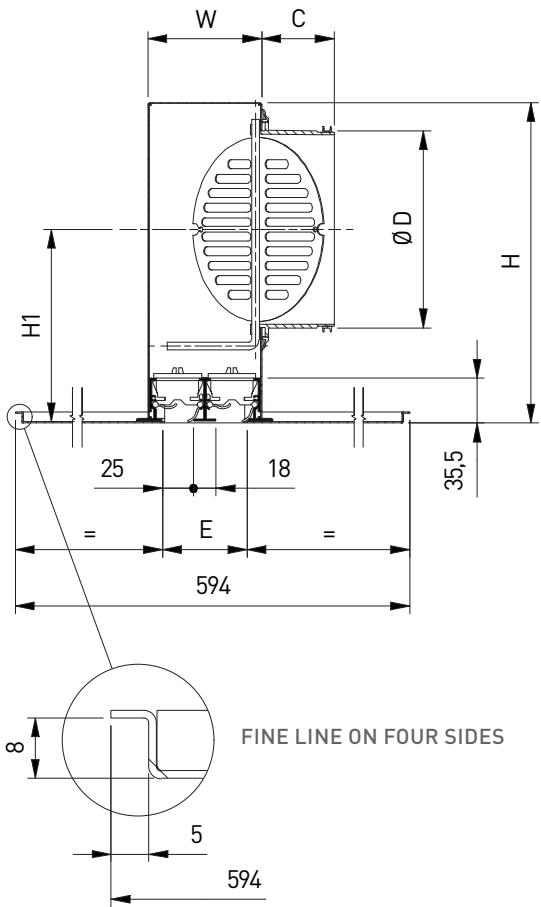
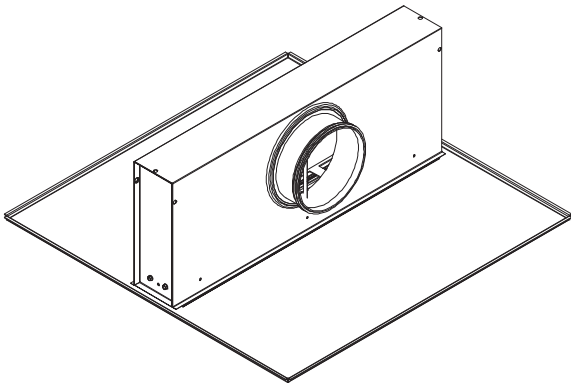
SLS_Z + SPP



FINE LINE ON TWO SIDES



SLS_Y + SPP



DIMENSIONS

| | Number of slots - SLS_P/_Q/_Z/_Y + SPP | | | | | |
|----|--|-----|-----|-----|-----|-----|
| | 1 | 2 | 3 | 4 | 5 | 6 |
| A | 65 | 108 | 151 | 194 | 237 | 280 |
| C | 58 | 58 | 58 | 58 | 78 | 78 |
| ØD | 123 | 158 | 198 | 198 | 248 | 248 |
| E | 25 | 68 | 111 | 154 | 197 | 240 |
| H | 200 | 250 | 300 | 300 | 350 | 350 |
| H1 | 118 | 150 | 180 | 180 | 205 | 205 |
| W | 46 | 89 | 132 | 175 | 219 | 262 |

All dimensions in mm
L <= 1200: 1 diameter
L >= 1201: 2 diameters