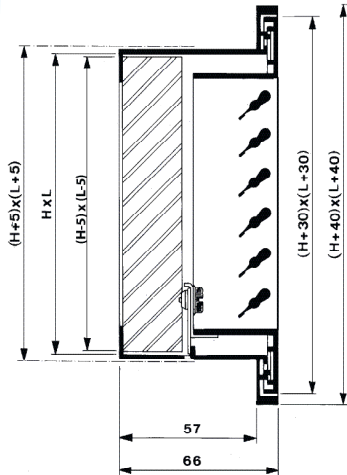


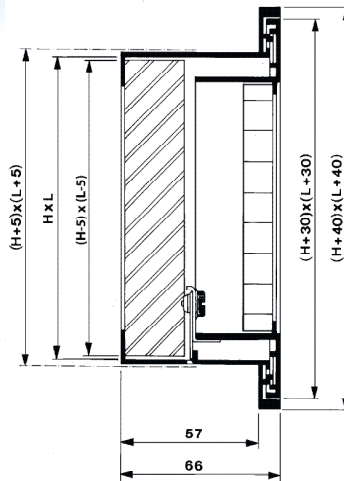
## EXHAUST GRILLE WITH FILTER FRAME AH710/770/780

### Installation dimensions

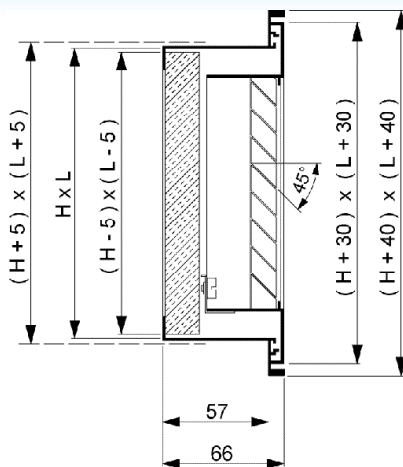
AH710



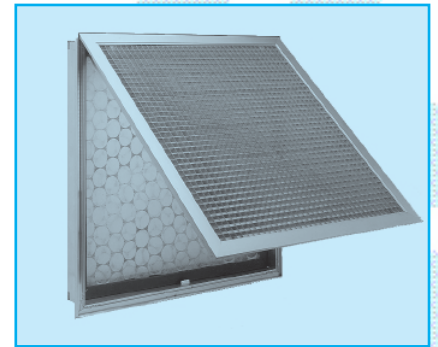
AH780



AH770



Nominal dimensions  
L = nominal length (mm)  
H = nominal height (mm)  
All dimensions in mm



### Application

The grille type AH710/770/780 is used for the exhaust of air in facilities such as offices, warehouses, workshops, ... The grille can be used for wall or duct mounting in situations where the surroundings have to be safeguarded against pollution.

### Technical information

Characteristics:

AH710:

- fixed horizontal vanes with  $40^\circ$  deflection
- free passage ca. 60%
- the grille is hinged to the filter frame enabling 25 mm thick filter cartridges

Length:

- available from 100 mm until 550 mm in multiples of 25 mm
- available from 550 mm until 1050 mm in multiples of 50 mm
- min L = 100 mm, max L = 1050 mm
- min H = 75 mm, max H = 900 mm

AH770/AH780:

- grid core with square mesh (AH 780) or with mesh of  $45^\circ$  deflection (AH770)
- mazes: 15 x 15 mm
- free passage ca. 85 %
- the grille is hinged to the filter frame enabling 25 mm thick filter cartridges
- available in multiples of 1 mm, as well in length as in height

