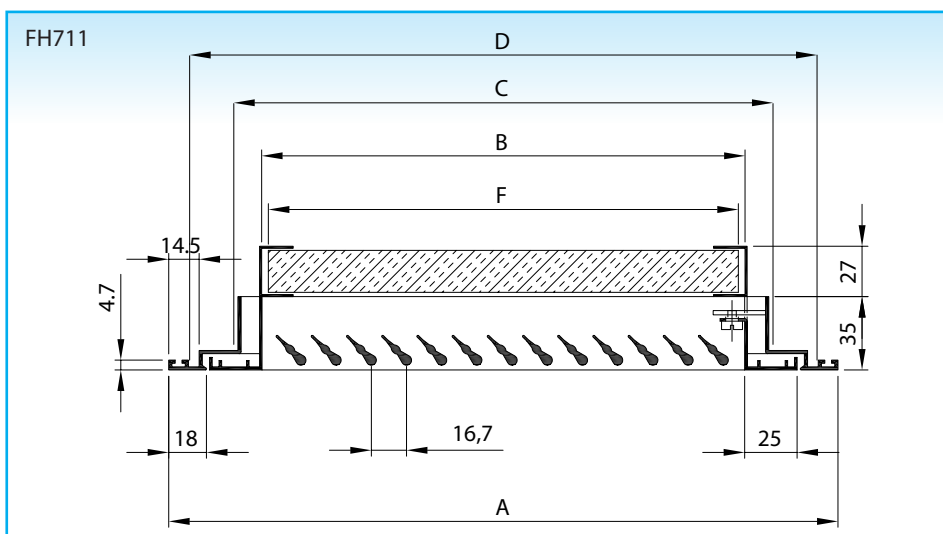
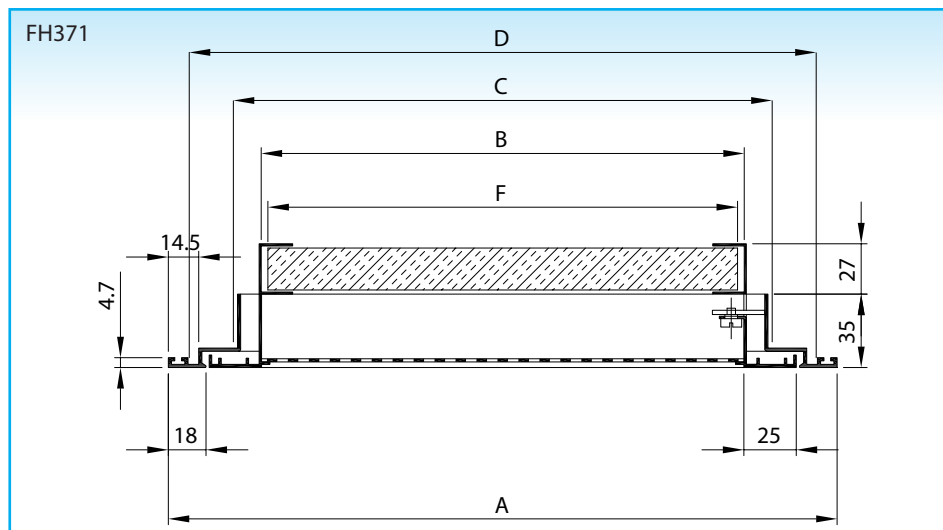
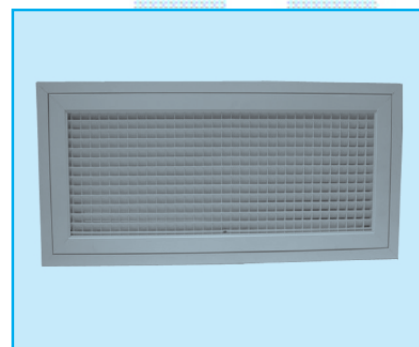


# EXHAUST GRILLE WITH FILTER FRAME FH371/711/771/781

## Installation dimensions



All dimensions in mm



## Application

The grille type FH371/711/ 771/781 is used for the exhaust of air in facilities such as offices, warehouses, work-shops, ... The grille can be used for wall or duct mounting where the surroundings have to be safeguarded against pollution.

## Technical information

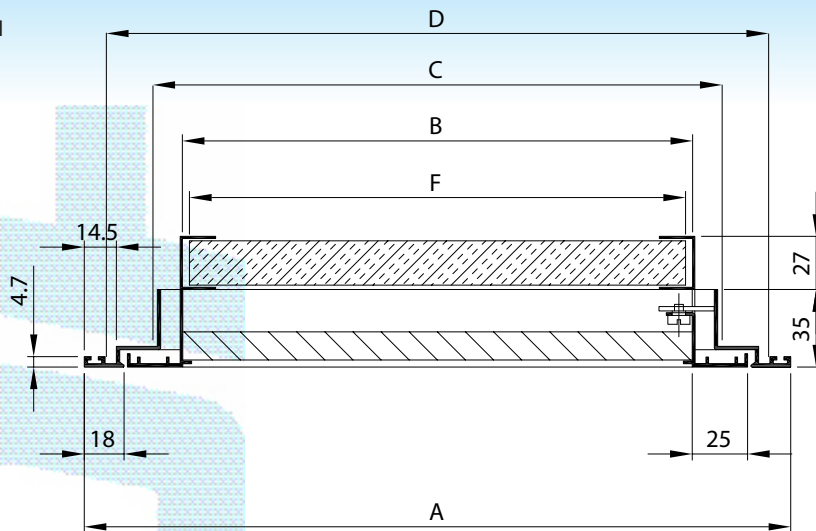
Characteristics:

**FH371:**

- perforated sheet
- free passage ca. 50 %
- the grille is hinged to the filter frame enabling all 25 mm thick filter cartridges

**FH711:**

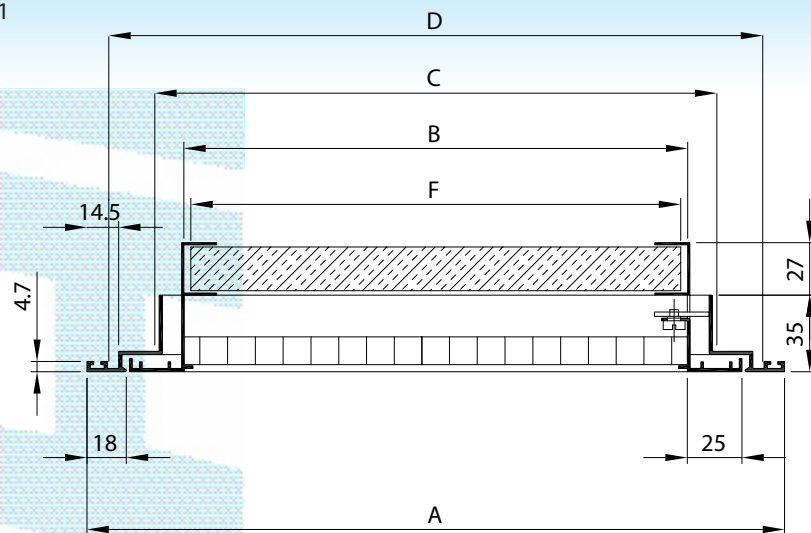
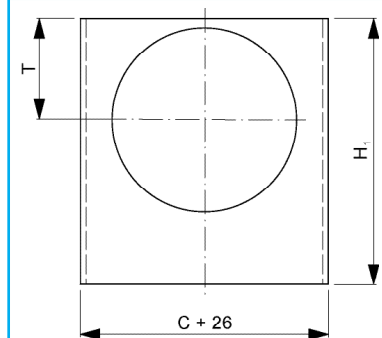
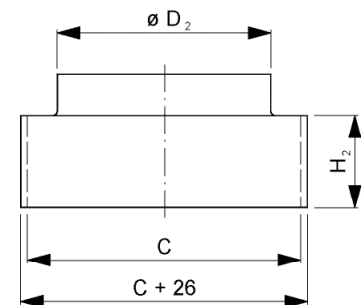
- fixed horizontal vanes
- free passage ca. 60 %
- the grille is hinged to the filter frame enabling all 25 mm thick filter cartridges

**FH771**

**FH771:**

- grid core with mesh 45° deflection, 15 x 15 mm
- free passage ca. 85 %
- the grille is hinged to the filter frame enabling all 25 mm thick filter cartridges

**FH781:**

- grid core with square mesh 15 x 15 mm
- free passage ca. 85 %
- the grille is hinged to the filter frame enabling all 25 mm thick filter cartridges

**FH781**

**Plenum DP100S**

**Plenum DP100T**


Nom. Dim.	A	B	C	D	Filter
594 x 294	594 x 294	505 x 205	535 x 235	574 x 274	500 x 200
594 x 594	594 x 594	505 x 505	535 x 535	574 x 574	500 x 500
669 x 669	669 x 669	580 x 580	610 x 610	649 x 649	575 x 575

All dimensions in mm

## Specifications description

Example:

Aluminium exhaust grille with fixed filter frame and grid core. Standard painted white (RAL 9010).

Type: FH781  
nom. dim. (L x H) ... x ... mm

## Accessories

A filter cartridge DUST STOP 25 mm can be delivered upon request. (standard without filter cartridge).

## Fixing

concealed screw fixing in filter-frame

## Delivery possibilities

- FH371: aluminium grille with filter cartridge and perforated sheet, painted RAL 9010
- FH711: aluminium grille with filter cartridge and fixed horizontal vanes, painted RAL 9010
- FH771: aluminium grille with grid core and mesh of 15 x 15 mm, 45° deflection, painted RAL 9010
- FH781: aluminium grille with grid core and square mesh of 15 x 15 mm, painted RAL 9010
- anodised on demand

## How to order

FH771, dimensions 594 x 594 mm with filter cartridge, painted white (RAL 9010).

### a) Grille

F	H	7	7	1	-	F	0	5	9	4	0	5	9	4
						L					H			

painted in RAL  
(standard RAL 9010)

371: with perforated steel sheet  
711: with fixed horizontal vanes  
771: with grid core (mazes 45° deflection,  
15 x 15 mm)  
781: with grid core (straight mazes 15 x 15 mm)

H: grille with fixed filterframe and concealed screw fixing

### b) Filter Cartridge

F	I	3	2	5	-	-	0	5	0	0	0	5	0	0
							L				H			

FI225: class G2  
FI325: class G3  
FI425: class G4