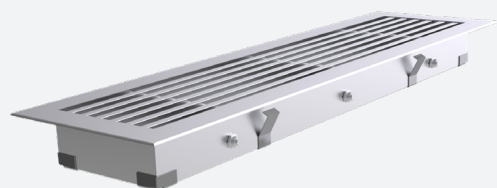


AK700

ALUMINIUM BAR GRILLE FOR FLOOR MOUNTING



LINEAR



RECTANGULAR



FLOOR



1 WAY THROW



LINEAR



SUPPLY



EXHAUST

VARIANTS

AK700, AK720

The floor grille type AK700 is suitable for the supply and exhaust of cooled or heated air, with straight bars or with 15° deflection. The grille is equipped with a thin flange of 1,5mm thickness. It is surface mounted where a neat aesthetic design is desired. Mounting by means of friction springs. Available in several lengths, but also in multiple middle and end sections to create a linear diffuser up to any length. Standard finish satin anodized.

Easy to install thanks to mounting clips

Architectural finish, thin flange of 1,5mm

Available in multiple connectable pieces for linear appearance

TECHNICAL INFORMATION

APPLICATION	Type	Linear, supply or exhaust
	Direction	Vertical, fixed bars
CONSTRUCTION	Center distance between bars	12,5mm
	Thickness of frame	1,5mm
	Min. length	100mm
	Max. length	2000mm
	Available steps in length	1mm
	Min. height	37,5mm
	Max. height	250mm
	Available steps in height	12,5mm
MATERIAL	Installation depth	35mm
	Standard material	Anodized aluminium
	Standard finishing	Satin anodized 11µm
	Product finishing options	Powder coating RAL of choice
MOUNTING	Mounting options	Friction springs

QUICK SELECTION

Supply/Exhaust Q _v [m³/h]		L [mm]												
H [mm]	Lw	150	200	250	300	400	500	600	700	800	900	1000	1100	1200
50	25 dB(A)	32	42	51	60	78	94	109	123	137	150	163	175	187
	35 dB(A)	52	68	84	98	127	153	177	201	223	244	265	285	304
75	25 dB(A)	51	67	82	96	124	150	174	197	219	239	259	279	297
	35 dB(A)	83	109	134	157	202	244	283	321	356	390	423	454	484
100	25 dB(A)	-	90	110	129	166	201	233	264	293	321	347	373	398
	35 dB(A)	-	146	179	211	271	327	380	430	477	523	566	609	649
150	25 dB(A)	-	-	162	191	245	296	343	389	432	473	512	550	587
	35 dB(A)	-	-	265	312	400	483	561	635	705	772	837	899	959
200	25 dB(A)	-	-	-	-	321	388	450	510	566	620	671	721	769
	35 dB(A)	-	-	-	-	526	635	738	835	927	1015	1099	1181	1260
250	25 dB(A)	-	-	-	-	-	480	557	631	700	766	830	891	951
	35 dB(A)	-	-	-	-	-	788	915	1035	1149	1258	1362	1463	1561

EFFECTIVE AIR DISCHARGE AREA

Supply/Exhaust A_f [m ²]	L [mm]												
H [mm]	150	200	250	300	400	500	600	700	800	900	1000	1100	1200
50	0.0024	0.0032	0.0040	0.0048	0.0064	0.0081	0.0097	0.0113	0.0129	0.0145	0.0161	0.0177	0.0193
75	0.0045	0.0060	0.0075	0.0090	0.0120	0.0149	0.0179	0.0209	0.0239	0.0269	0.0299	0.0329	0.0359
100	0.0066	0.0087	0.0109	0.0131	0.0175	0.0218	0.0262	0.0306	0.0349	0.0393	0.0437	0.0481	0.0524
150	0.0107	0.0143	0.0178	0.0214	0.0285	0.0356	0.0428	0.0499	0.0570	0.0641	0.0713	0.0784	0.0855
200	0.0148	0.0198	0.0247	0.0297	0.0395	0.0494	0.0593	0.0692	0.0791	0.0890	0.0988	0.1087	0.1186
250	0.0190	0.0253	0.0316	0.0379	0.0506	0.0632	0.0759	0.0885	0.1011	0.1138	0.1264	0.1391	0.1517

PRODUCT KEY

ALUMINIUM BAR GRILLE FOR FLOOR MOUNTING

A	K	7	0	0	-	-	0	4	0	0	0	1	0	0
							Nominal length L (mm): From 100 to 2000mm, per 1mm				Nominal height H (mm): From 37,5 to 250mm, per 12,5mm			
							-: Naturel anodised F: Coated							
							-: Standard C: Corner piece 0° or 15° deflection inwards (300x300 inner dimension) D: Corner piece 15° outwards (300x300 inner dimension) E: End piece (for 0° deflection) M: Intermediate piece L: Left end piece (for 15° deflection) R: Right end piece (for 15° deflection)							
							0: Without damper 7: With damper GT007 9: With damper GT009							
							0: Deflection 0° 2: Deflection 15°							
C: Only core, without frame K: Frame width 20mm, straight, friction spring fixing														

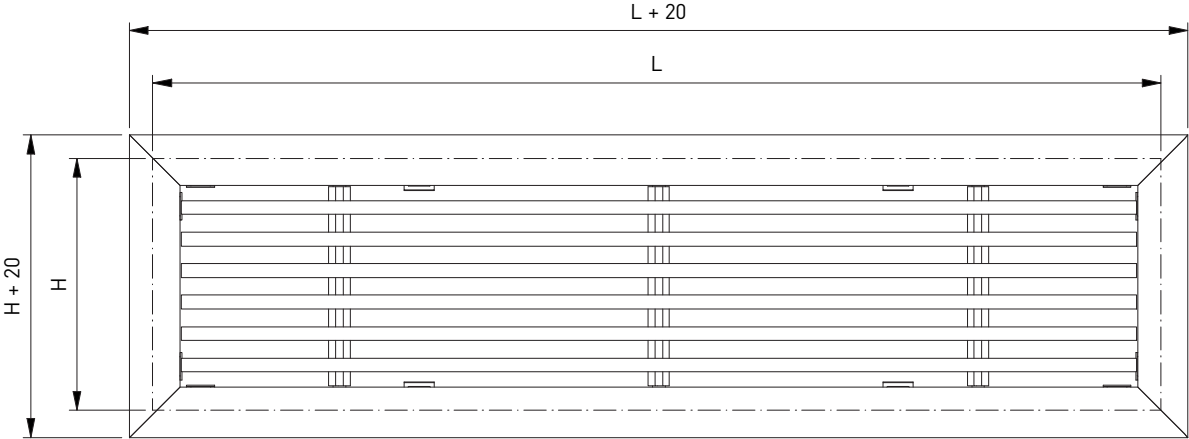
Notes:

Damper GT009 only available for length ≤ 750mm and height < 75mm

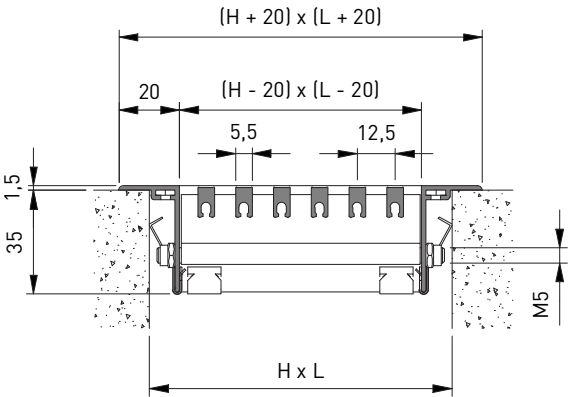
Intermediate pieces with damper GT009 have length = 750mm

Core without frame, only available in standard version without damper

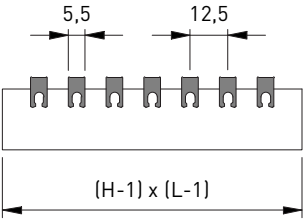
Corner pieces only available painted and without damper



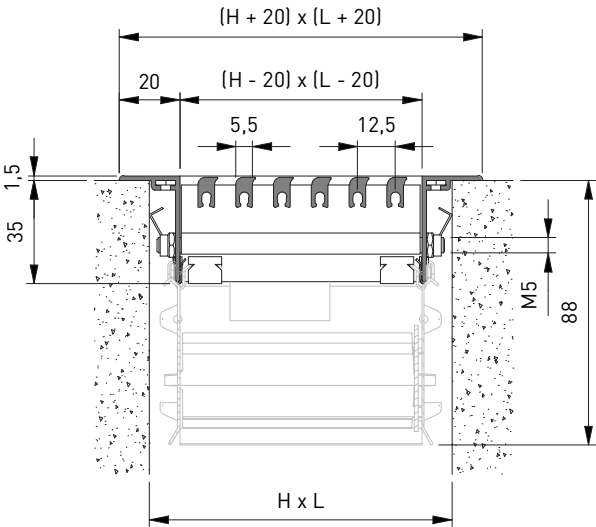
AK700



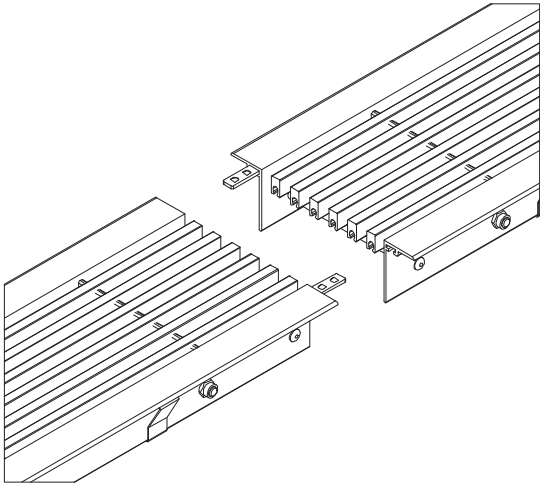
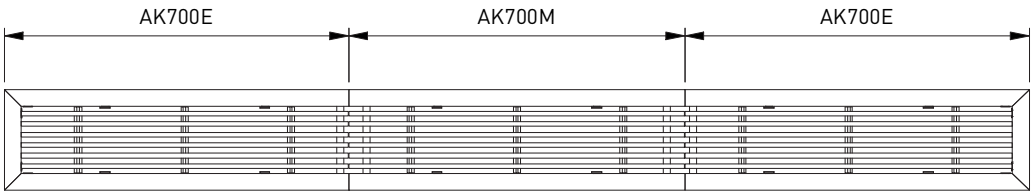
AC700



AK727



LINEAR: END PIECES AND INTERMEDIATE PIECES



AK700C

