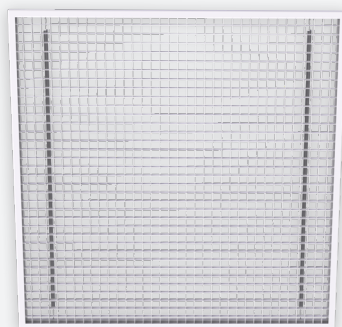


# AC700

GRILLE WITH GRID CORE



## VARIANTS

AC770, AC780

Exhaust grille with fixed grid core with straight links (AC780) or with links of 45° deflection (AC770). The grille is used for the exhaust of large quantities of air with minimal pressure loss in facilities such as offices, warehouses, shopping centres, ... Designed for installation in modular T-bar ceiling systems. Also suitable for connection with plenum.

Exhaust grille with high free passage ca. 85%

With straight links or with links of 45° deflection

Links of 15 x 15mm

## ACCESSORIES



DP100T



DP100S

## TECHNICAL INFORMATION

APPLICATION	Type	Exhaust
CONSTRUCTION	AC780	Fixed straight mesh 15x15mm
	AC770	Fixed inclined mesh 15x15mm, 45° deflection
	Available sizes length x height	595x295, 595x595, 670x670, 1195x595mm
MATERIAL	Standard material	Painted aluminium
	Standard finishing	Powder coating RAL9003M
	Product finishing options	Powder coating RAL of choice
MOUNTING	Mounting options	Installation in modular ceiling systems

## QUICK SELECTION

Exhaust Q <sub>v</sub> [m³/h]		
L x H [mm]	L <sub>w</sub>	
595 x 295	25 dB(A)	1223
	35 dB(A)	1612
595 x 595	25 dB(A)	2284
	35 dB(A)	3019
670 x 670	25 dB(A)	2852
	35 dB(A)	3760
1195 x 595	25 dB(A)	4507
	35 dB(A)	5941

## EFFECTIVE AIR DISCHARGE AREA

Exhaust				
L x H [mm]	595 x 295	595 x 595	670 x 670	1195 x 595
A <sub>k</sub> [m²]	0,0912	0,1888	0,2424	0,3910

PRODUCT KEY

GRILLE WITH GRID CORE

A	C	7	8	0	-	-	0	5	9	5	0	5	9	5
---	---	---	---	---	---	---	---	---	---	---	---	---	---	---

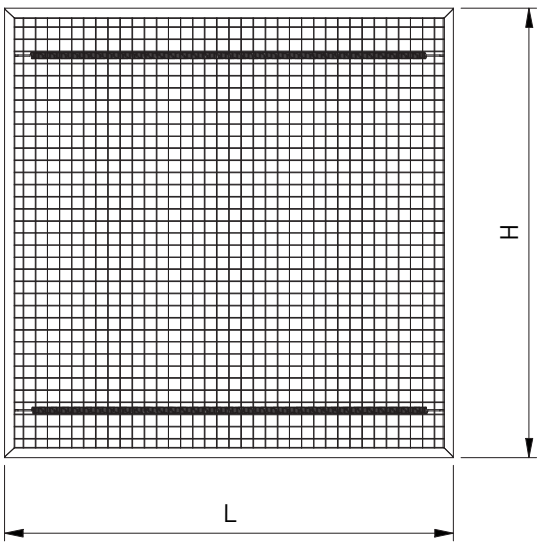
Nominal length L (mm):  
595, 670, 1195

Nominal height H (mm):  
295, 595, 670

-: Standard RAL9003M  
F: Coated in RAL of choice

7: Inclined mesh 15x15mm, 45° deflection  
8: Straight mesh 15x15mm

AC700

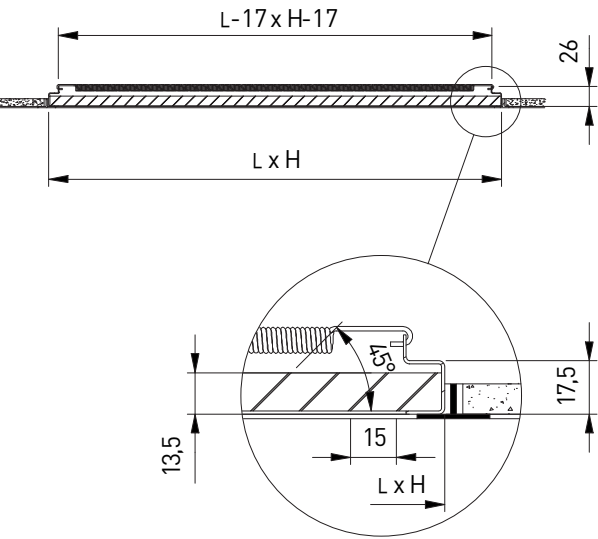


DIMENSIONS

L	H
595	295
595	595
670	670
1195	595

All dimensions in mm

AC780



AC770

