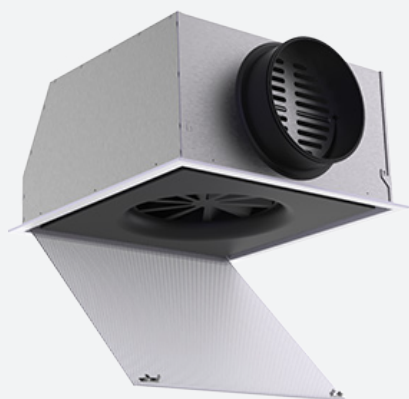


MCAS

MODULAR PERFORATED CEILING DIFFUSER



VARIANTS

MCWS, MCAV

The MCAS is a diffuser mainly used in modular ceiling systems. The perforated front plate with reduced see through view gives the unit an aesthetical finish. It's equipped with push-pull locks to provide easy access for cleaning or changing the flow element. In combination with the swirl element insert plate type MCWS the unit is suitable for the supply of heated or cooled air. With the MCAV element the unit can only be used for exhaust. The system is especially applicable to situations where high requirements are to be met with respect to hygiene, flexibility and comfort.

Simple cleaning according VDI hygiene instructions (VDI 6022)

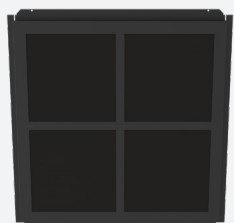
Aesthetic diffuser, supply and exhaust have the same look

Easily convertible from exhaust to supply

ACCESSORIES



MCWS



MCAV



RECTANGULAR



CEILING



SWIRL



SUPPLY



EXHAUST

TECHNICAL INFORMATION

APPLICATION	Type	Supply or exhaust
	Airflow direction	Horizontal
CONSTRUCTION	Frontplate	Perforated, hinges open with push-pull lock Perforations Ø4,5mm, 51% free passage
	Insert plate	Supply: swirl pattern (MCWS) Exhaust: foam filter to prevent viewing (MCAV)
	Available panel sizes	294x294, 594x594mm
	Available diameters	Ø100, 125, 160, 200, 250mm
MATERIAL	MCAS (frontplate+plenum)	Frontplate: powder coated sheet steel Plenum: galvanised (275g/m ²) sheet steel
	Spigot plenum	PP/TPE spigot, Class D spigot with double lip seal
	MCWS (supply: swirl insert plate)	Powder coated sheet steel RAL9005
	MCAV (exhaust: foam insert plate)	Frame: powder coated sheet steel RAL9005 Foam: reticulated foam
	Standard finishing	Powder coating RAL9010
	Product finishing options	Powder coating RAL of choice
	Insulation (optional)	Melamine 6mm
	Volume control (optional)	Perforated volume control disk with manual operation
MOUNTING	Mounting options	Always equipped with mounting eyes (ø 7mm)

QUICK SELECTION

Supply Q _v [m³/h]	A [mm]	L _w		
		25 dB(A)	30 dB(A)	35 dB(A)
MCAS_100 + MCWS_125	294	48	59	72
	594	53	64	77
MCAS_125 + MCWS_160	294	84	100	120
	594	78	93	112
MCAS_160 + MCWS_200	594	125	150	181
MCAS_200 + MCWS_250	594	171	201	237
MCAS_250 + MCWS_315	594	244	291	347

Exhaust Q _v [m³/h]	A [mm]	L _w		
		25 dB(A)	30 dB(A)	35 dB(A)
MCAS_100 + MCAV	294	132	158	191
MCAS_125 + MCAV	294	190	225	268
	594	210	248	292
MCAS_160 + MCAV	294	238	280	331
	594	403	483	579
MCAS_200 + MCAV	594	449	547	666
MCAS_250 + MCAV	594	492	629	804

EFFECTIVE AIR DISCHARGE AREA

Supply	A [mm]	A _k [m²]
MCAS_100 + MCWS_125	294	0.0068
	594	0.0208
MCAS_125 + MCWS_160	294	0.0094
	594	0.0268
MCAS_160 + MCWS_200	594	0.0358
MCAS_200 + MCWS_250	594	0.0514
MCAS_250 + MCWS_315	594	0.0823

PRODUCT KEY

MODULAR PERFORATED CEILING DIFFUSER WITH PLENUM

M	C	A	S	-	F	S	-	-	0	0	2	5	0	0	5	9	4
										Diameter N1 (mm): 100, 125, 160, 200, en 250			Panel size A (mm): 294 of 594				
										0: Plenum with mounting eyes							
										-: Without damper D: With damper							
										'-: Non insulated plenum G: Insulated plenum							
										S: Side connection							
										F: Coated							

* Panel size A 294 can only be combined with Diameter N1 100, 125, en 160

SWIRL INSERT PLATE FOR SUPPLY

M	C	W	S	-	-	-	0	3	1	5	0	5	9	4
							Diameter N2 (mm) 125, 160, 200, 250, en 315				Panel size A (mm) 294 of 594			

* Panel size A 294 can only be combined with Diameter N2 125 en 160

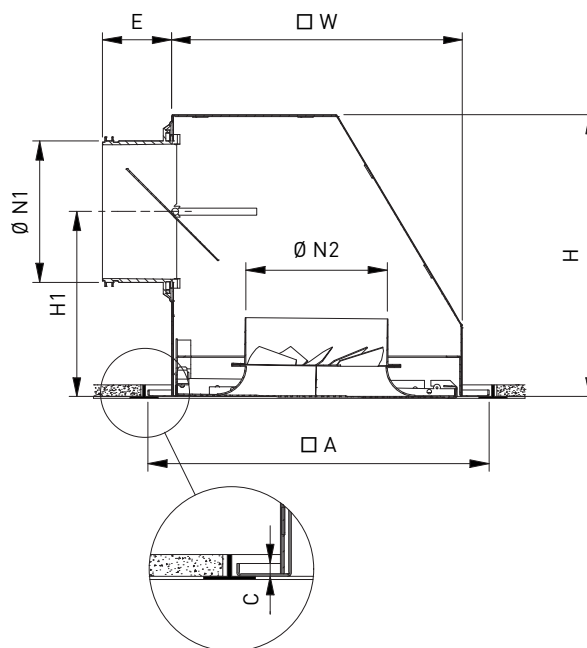
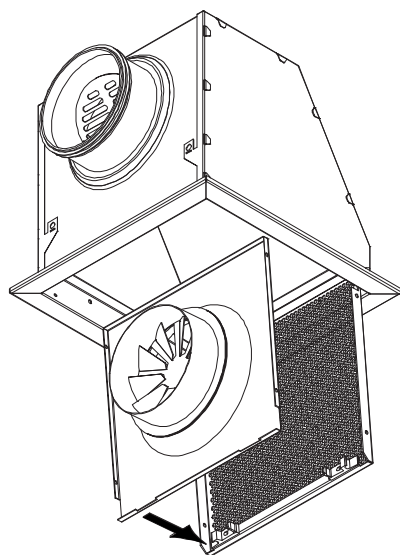
FOAM INSERT PLATE FOR EXHAUST

M	C	A	V	-	-	-	0	5	9	4
Panel size A (mm) 294 of 594										

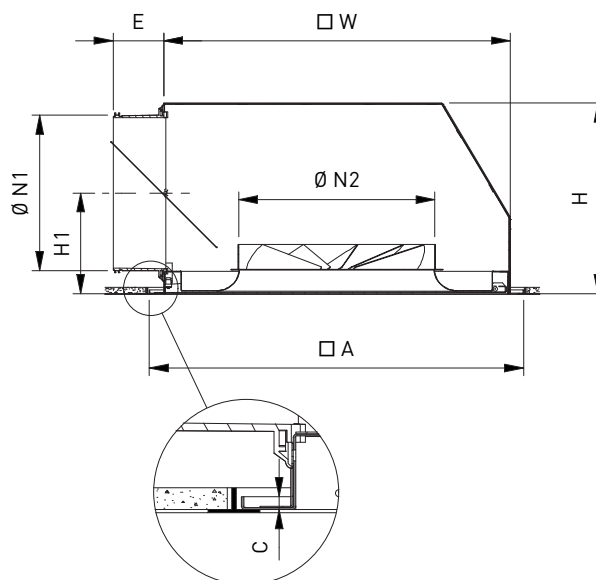
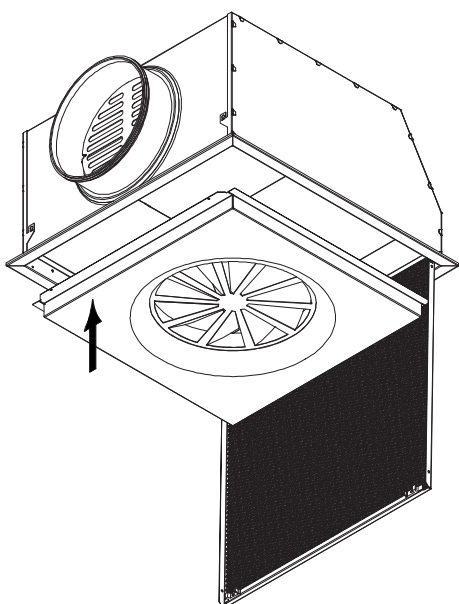
PERFORATED CEILING DIFFUSER WITHOUT PLENUM

M	C	A	-	F	0	5	9	4
Panel size A (mm) 294 of 594								

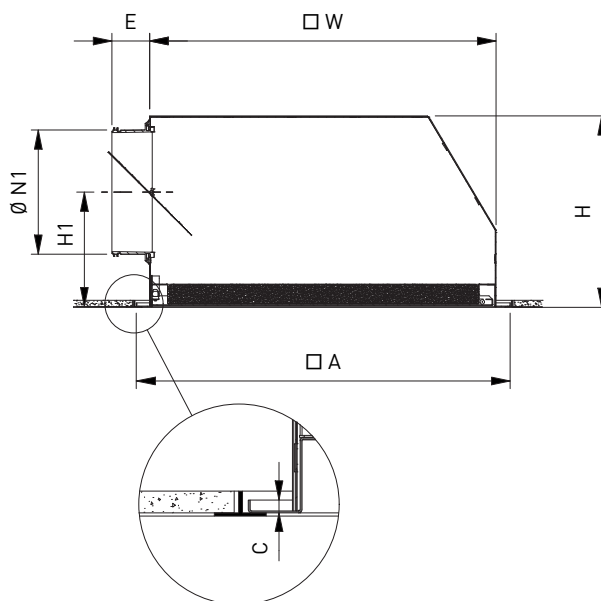
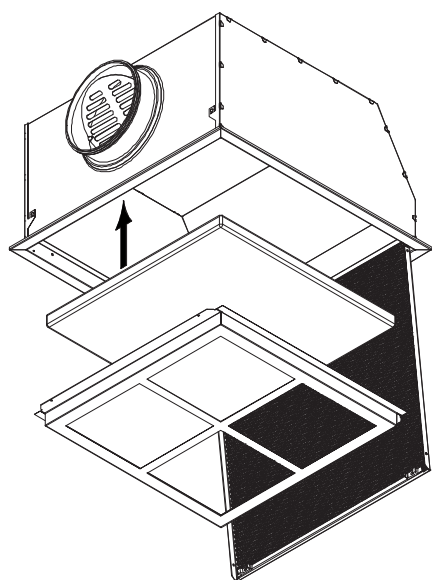
MCAS_100 + MCWS_125
MCAS_125 + MCWS_160



MCAS_160 + MCWS_200
MCAS_200 + MCWS_250
MCAS_250 + MCWS_315



MCAS + MCAV



DIMENSIONS

	A	B	C	E	H	H1	ØN1	ØN2	W
MCAS_100 + MCWS_125	294	258	6	52	240	180	100	125	248
	594	558	6	58	240	180	100	125	548
MCAS_125 + MCWS_160	294	258	6	58	240	158	125	160	248
	594	558	6	58	300	218	125	160	548
MCAS_160 + MCWS_200	594	558	6	58	300	200	160	200	548
MCAS_200 + MCWS_250	594	558	6	58	300	180	200	250	548
MCAS_250 + MCWS_315	594	558	6	78	300	155	250	315	548
MCAS_100 + MCAV	294	258	6	52	240	170	100	-	248
MCAS_125 + MCAV	294	258	6	58	240	158	125	-	248
	594	558	6	58	300	218	125	-	548
MCAS_160 + MCAV	294	258	6	58	240	140	160	-	248
	594	558	6	58	300	200	160	-	548
MCAS_200 + MCAV	594	558	6	58	300	180	200	-	548
MCAS_250 + MCAV	594	558	6	78	300	155	250	-	548

All dimensions in mm

