

MS

MULTINOZZLE DIFFUSER



VARIANTS

MSS_S, MSH_S

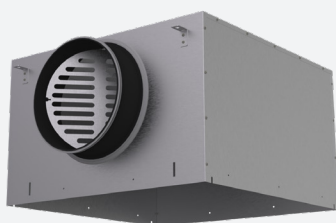
The MS ceiling diffuser is fitted with adjustable nozzles which allow all kind of multi directional air patterns. The special design of the nozzles creates a high coanda effect even at low volumes so its ideally suited for variable air controlled systems. The front plate is hinged and equipped with push-pull locks for easy acces to the plenum.

Multi directional pattern with adjustable nozzles

High coanda effect, perfectly suited for variable air controlled systems

Hinged frontplate with push-pull locks

ACCESSORIES



MP200S



TECHNICAL INFORMATION

APPLICATION	Type	Supply or exhaust
	Airflow direction	Horizontal multidirectional
CONSTRUCTION	Frontplate	Hinges open through push-pull locks
	Available patterns (number of nozzles)	9, 25, 49, 81, 94
	Standard sizes	294x294, 394x394, 494x494, 594x594mm
MATERIAL	Standaard material	Frontplate: powder coated sheet steel metal Nozzles: POM Plenum: galvanised [275g/m ²] steel sheet
	Spigot	PP/TPE spigot, Class D spigot with double lip seal
	Standard finishing	Powder coating RAL9010
	Product finishing options	Powder coating RAL of choice
	Insulation (optional)	Melamine 6mm
	Volume control (optional)	Galvanised perforated volume flow control disk inside the spigot
MOUNTING	Mounting options	Mounting straps

QUICK SELECTION

Supply Q _v [m ³ /h]	L _w		
	25 dB(A)	30 dB(A)	35 dB(A)
MSS/9/294	70	82	96
MSS/25/394	152	175	201
MSS/49/494	263	300	343
MSS/81/594	390	446	511
MSH/81/594	442	508	585
MSH/94/594	503	579	667

EFFECTIVE AIR DISCHARGE AREA

Supply A _k [m ²]					
MSS/9/294	MSS/25/394	MSS/49/494	MSS/81/594	MSH/81/594	MSH/94/594
0.0098	0.0202	0.0326	0.0513	0.0534	0.0569

PRODUCT KEY

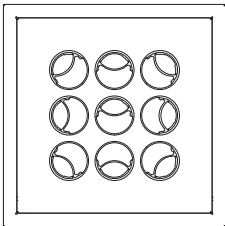
MULTINOZZLE DIFFUSER + PLENUM																					
M	S	S	0	1	-	F	S	-	-	1	0	4	9	0	2	0	0	0	4	9	4
											Number of nozzles: 9, 25, 49, 81, 94			Spigot ØD (mm): 125, 160, 200, 250, 315			Paneelmaat A (mm): 294, 394, 494, 594				
											1: With mounting straps										
											-: Without damper D: With damper										
											-: Non insulated plenum G: Insulated plenum H: Half insulated plenum										
											S: Side connection										
											F: Coated										
											0: Black nozzles 1: White nozzles E: Perforated diffuser for exhaust (no nozzles)										
											0: With push-pull lock										
											S: Standard flow H: High flow										

MULTINOZZLE DIFFUSER, FACE WITHOUT PLENUM													
M	S	S	0	1	-	F	0	4	9	0	4	9	4
							Number of nozzles: 9, 25, 49, 81, 94		Panel size A (mm): 294, 394, 494, 594				
							F: Coated						
							0: Black nozzles 1: White nozzles E: Perforated diffuser for exhaust (no nozzles)						
							0: With push-pull lock						
							S: Standard flow H: High flow						

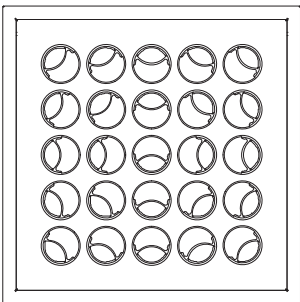
PLENUM FOR MULTINOZZLE DIFFUSER																	
M	P	2	0	0	-	S	-	-	1	0	2	0	0	0	4	9	4
									Spigot ØD (mm): 125, 160, 200, 250, 315								
									Size (mm): 294, 394, 494, 594								
									1: With mounting straps								
									-: Without damper D: With damper								
									-: Non insulated plenum G: Insulated plenum H: Half insulated plenum								
									S: Side connection								
									0: Standard flow (without perforated plate) 1: High flow (with perforated plate)								

MSS + MP200S-D1

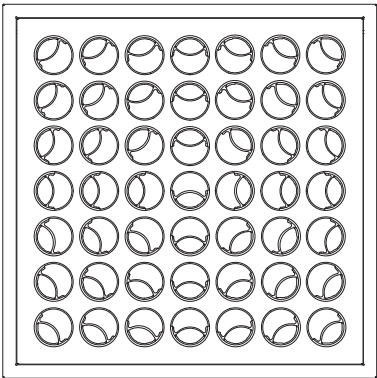
294 [9]



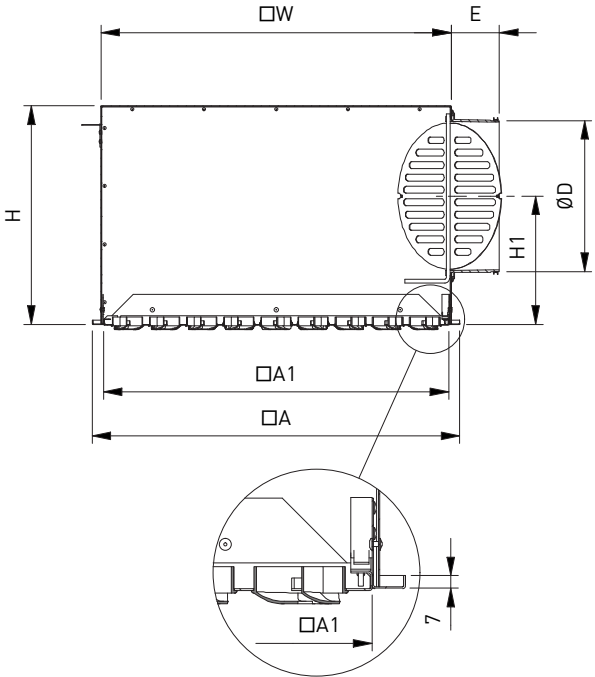
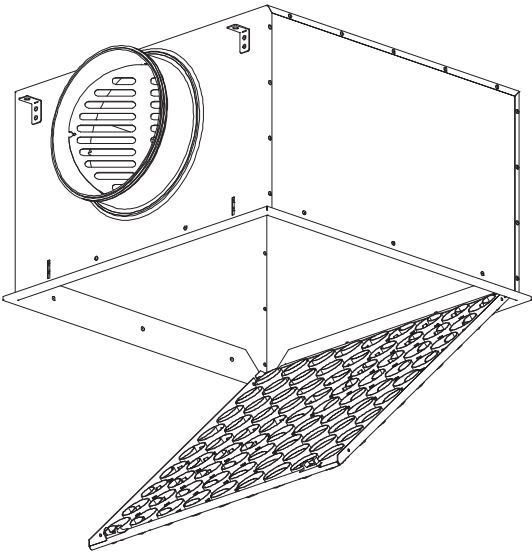
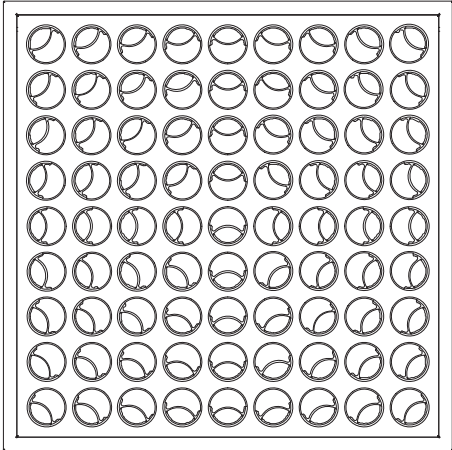
394 [25]



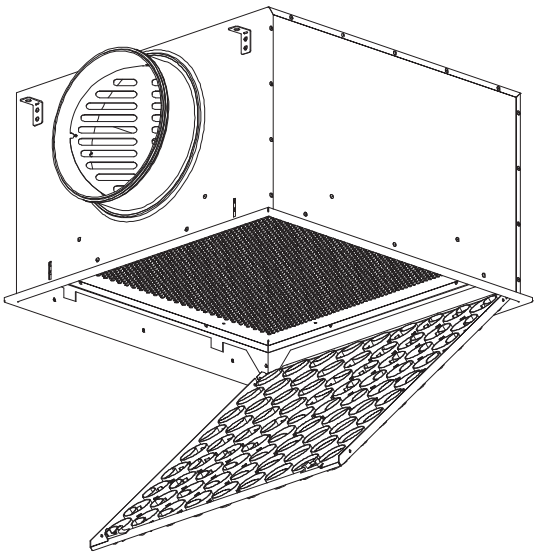
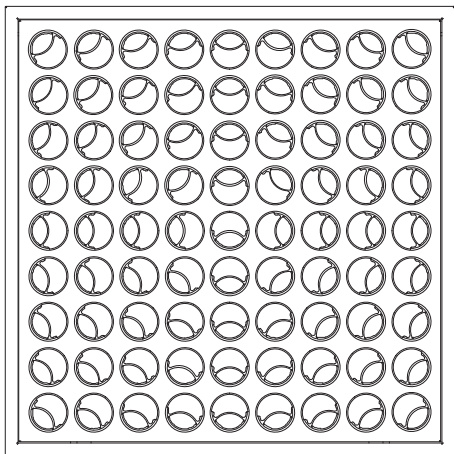
494 [49]



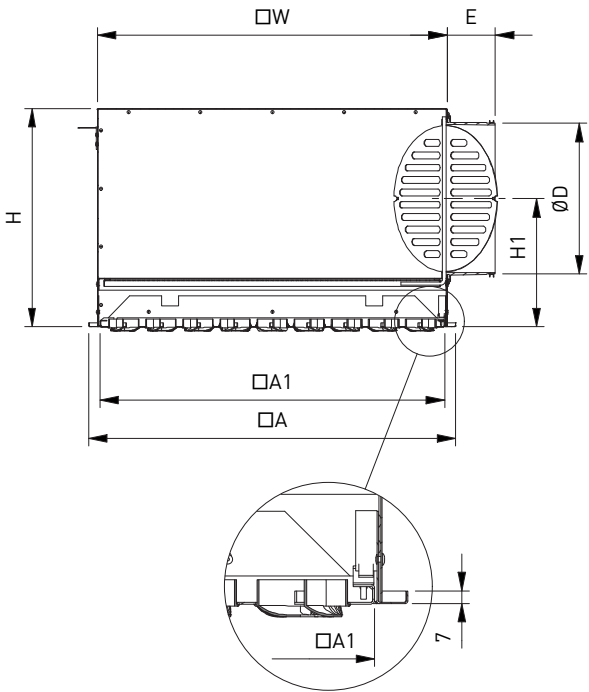
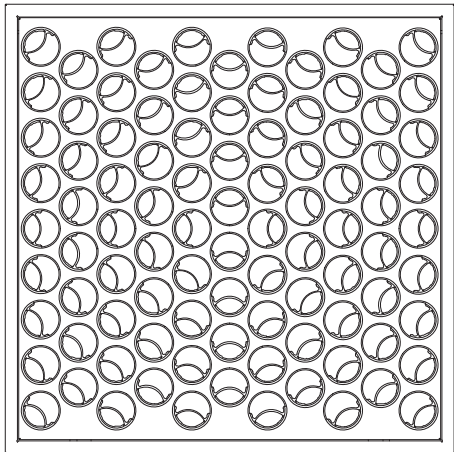
594 [81]



594 (81)



594 (94)

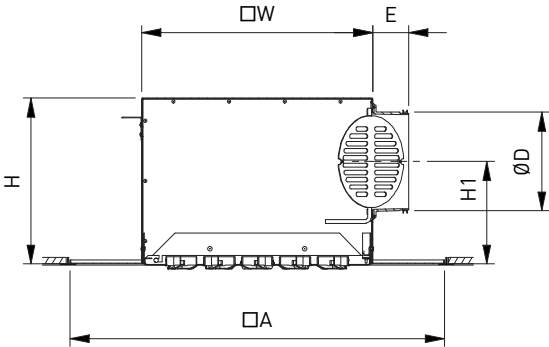
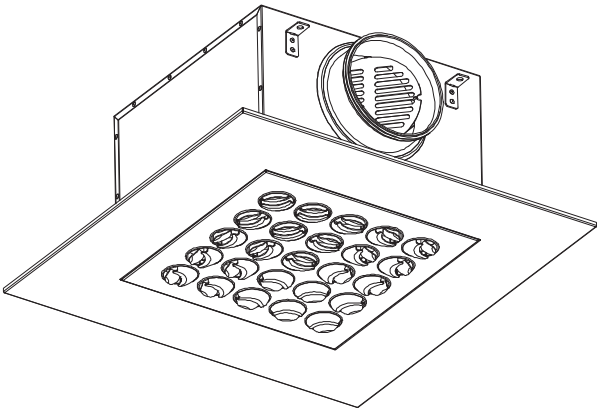


DIMENSIONS

	A	A1	B	ØD	E	H	H1	W
MSS/9/294	294	258	274	125	57.5	228	145.5	265x265
MSS/25/394	394	358	374	160	57.5	263	163	365x365
MSS/49/494	494	458	474	200	57.5	303	183	465x465
MSS/81/594	594	558	574	250	77.5	353	208	565x565
MSH/81/594	594	558	574	250	77.5	353	208	565x565
MSH/94/594	594	558	574	315	49	423	254	565x565

All dimensions in mm

MSS01-FS-D1/25/160/594



MSS0E-FS--1/000/250/594

