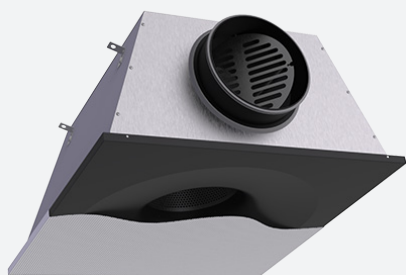


DG300

PERFORATED CEILING DIFFUSER WITH STRONG COANDA EFFECT



VARIANTS

DG330, DG360

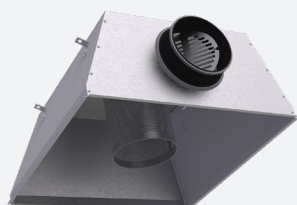
This perforated ceiling diffuser made from powder coated steel is suitable for modular T-bar ceiling systems. This product is characterised by a uniform radial exhaust with strong coanda over a broad temperature range (also for low air volumes). Suitable for top connection through a transition piece or side connection with plenum. The plenum DP300S is designed in a pyramid shape in order to make it stackable and allow easy economical transport. Pressure equalization perfo and connection collar are delivered separately to be mounted on site by means of a handy quarter turn connection.

Ease of installation

Strong coanda effect over a broad temperature range

Discrete diffuser

ACCESSORIES



DP300S



DP300T



RECTANGULAR



CEILING



ROUND



SUPPLY



EXHAUST

TECHNICAL INFORMATION

APPLICATION	Type	Supply or exhaust
	Airflow direction	Radial
CONSTRUCTION	Frontplate	26% square perforation (DG330) 51% triangular perforation (DG360) fitted with deflection disc
	Available nominal diameters	Ø80, 100, 125, 160, 200mm
	Available panel sizes	294x294, 394x394, 494x494, 594x594mm
MATERIAL	Frontplate	Powder coated steel sheet metal
	Standard finishing	Powder coating RAL9010
	Product finishing options	Powder coating RAL of choice
	Insert plate DG300	Powder coating RAL9005
	Transition piece DP300T	Brut aluminium
	Plenum DP300S	Galvanised (275g/m²) sheet steel
	Spigot	PP/TPE spigot, Class D spigot with double lip seal
	Insulation (optional)	Melamine 6mm
	Volume control (optional)	Galvanised perforated volume flow control disk inside the spigot
MOUNTING	Mounting options	Designed for T-bar ceilings Plenum DP300S with mounting straps

QUICK SELECTION

Supply Q _v [m³/h]	L _w			
	ØN [mm]	25 dB(A)	30 dB(A)	35 dB(A)
DG330T - 26%	80	52	64	79
	100	136	159	185
	125	196	229	267
	160	263	307	359
	200	506	590	689
DG330S - 26%	125	130	154	182
	160	169	205	249
	200	315	365	426
DG360T - 51%	100	61	77	98
	125	86	108	135
	160	139	176	223
	200	239	288	346
DG360S - 51%	125	95	107	121
	160	142	169	201
	200	223	268	321

EFFECTIVE AIR DISCHARGE AREA

Supply A _k [m²]	ØN [mm]				
	80	100	120	160	200
DG330 - 26%	0.0089	0.0088	0.015	0.0313	0.0726
DG360 - 51%	-	0.0241	0.0277	0.0337	0.0422

PRODUCT KEY

PERFORATED CEILING DIFFUSER															
D	G	3	3	0	-	F	0	2	0	0	0	5	9	4	
						Nominal diameter N (mm): 80, 100, 125, 160, 200					Panel size A (mm): 294, 394, 494, 594				
						F: Coated									
						0: Without perforated panel, only insert plate (always RAL9005) 3: 26% squared perforation 6: 51% triangular perforation									

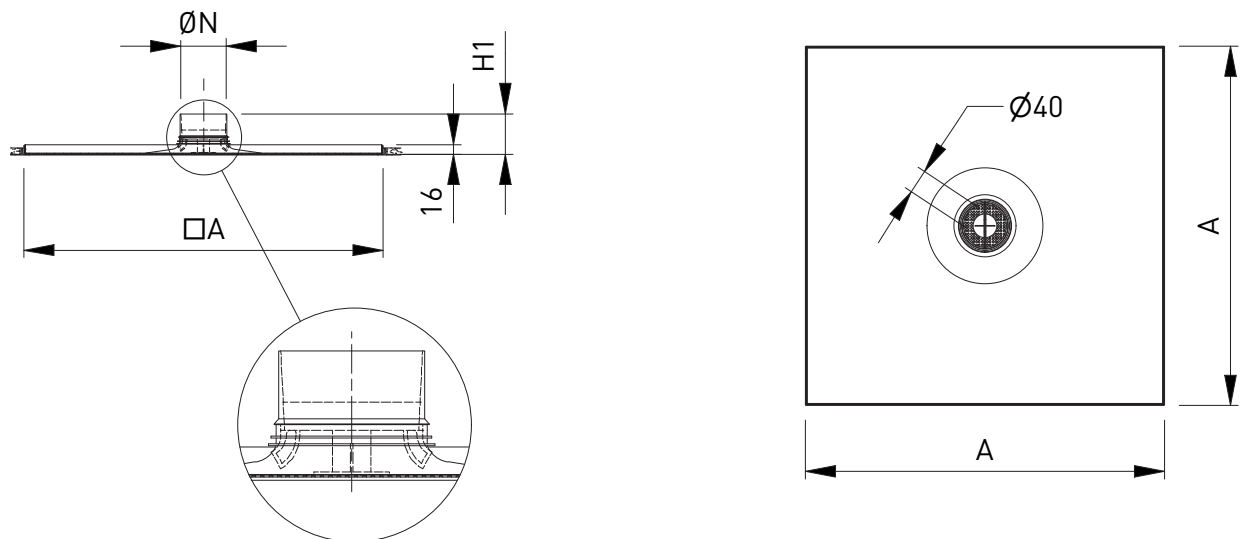
Note: 51% perforation not available in nominal diameter 80

TRANSITION PIECE FOR TOP CONNECTION WITH FLEX DUCTS										
D	P	3	0	0	T	0	2	0	0	
						Nominal diameter N (mm) 100, 125, 160, 200				

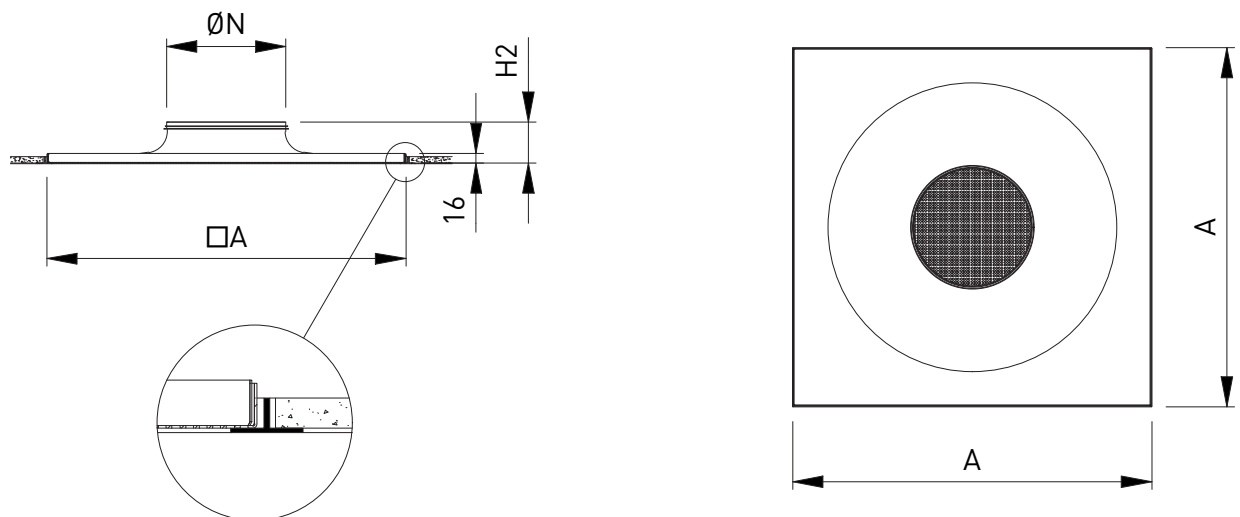
STACKABLE PYRAMIDAL PLENUM FOR DG300																
D	P	3	0	0	S	-	-	1	0	2	0	0	0	5	9	4
						Nominal diameter N (mm): 125, 160, 200					Panel size A (mm): 594					
						1: With mounting straps										
						-: Without damper D: With damper										
						-: Non insulated plenum G: Insulated plenum H: Half insulated plenum										
						S: Side connection										

Note: Panel size DG300 = Panel size DP300

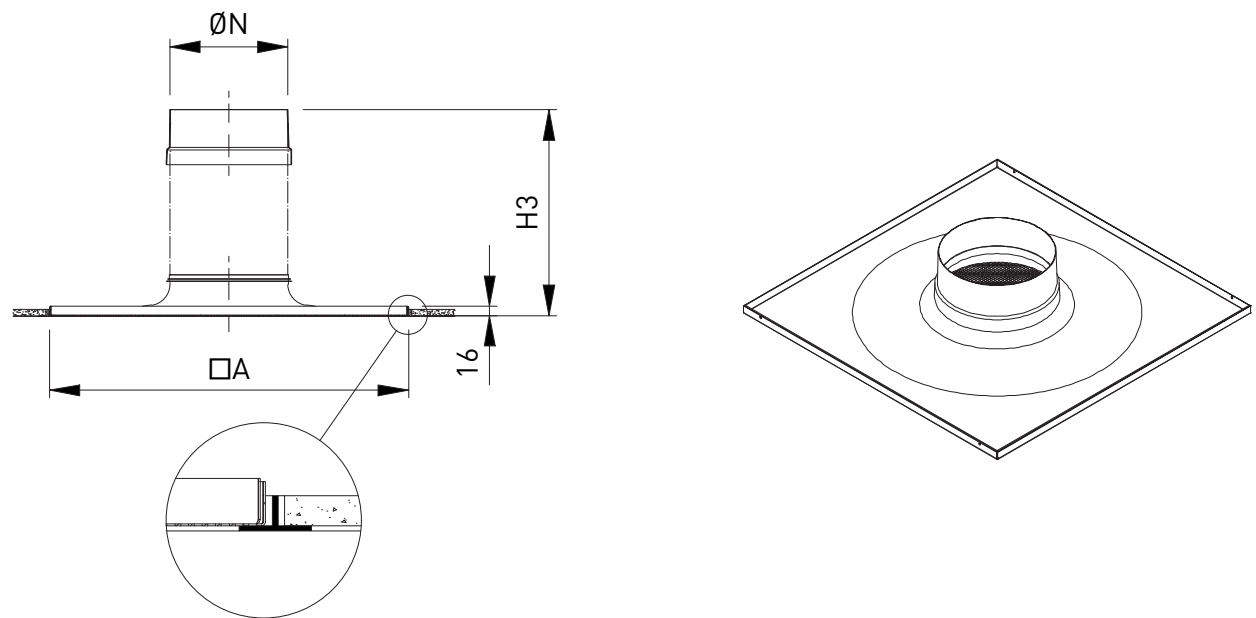
DG330 Ø80

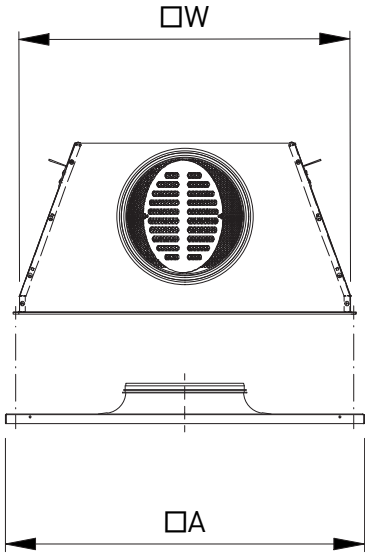
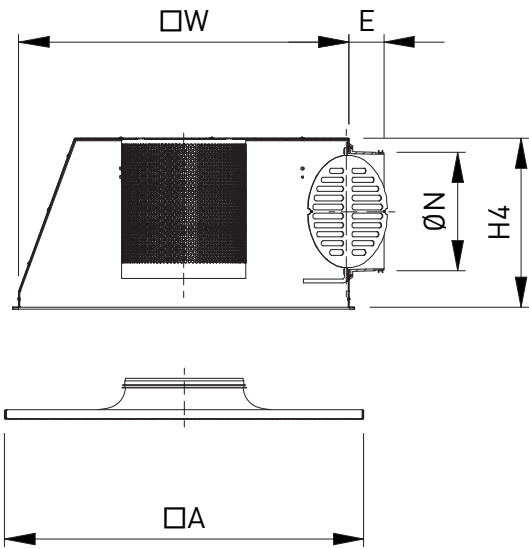


DG330 Ø100 - Ø200



DG330 + DP300T

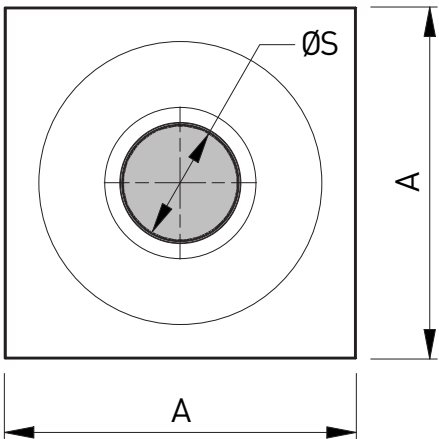




DIMENSIONS

$\varnothing N$	A	E	H1	H2	H3	H4	W
80	294	-	67	-	-	-	-
	394	-	67	-	-	-	-
	494	-	67	-	-	-	-
	594	-	67	-	-	-	-
100	294	-	-	34	99	-	-
	394	-	-	34	99	-	-
	494	-	-	34	99	-	-
	594	-	-	34	99	-	-
125	294	-	-	49	114	-	-
	394	-	-	49	114	-	-
	494	-	-	49	114	-	-
	594	58	-	49	114	204	545
160	394	-	-	54	119	-	-
	494	-	-	54	119	-	-
	594	58	-	54	119	239	545
200	594	58	-	72	137	279	545

DG360



Deflection disc $\varnothing S$		
$\varnothing N$	DG330	DG360
80	40	
100	-	90
125	-	120
160	-	155
200	-	190

All dimensions in mm

