

TE370

2 WAY SLOT DIFFUSER WITH CENTRAL PERFORATED EXHAUST



VARIANTS

TE370S

The slot diffuser TE370 is suitable for the supply and exhaust of heated and cooled air in offices, conference rooms, etc. Specially developed fixed baffles ensure a fixed double-sided horizontal pulse pattern and a low noise level. High induction and high penetration of the airflow into the room are obtained without internal turbulence. The removable core of the diffuser is perforated and is used for extracting air.

Fixed 2 way horizontal air pattern

Double combination plenum supply+exhaust

Central exhaust section consisting of removable perforated grille, equipped for mounting of wire frame filter

ACCESSORIES



FI-05

TECHNICAL INFORMATION

APPLICATION	Airflow direction	Horizontal, 2-way, fixed
	Type	Combined diffuser for supply +exhaust
CONSTRUCTION	Frontplate	Supply: 1, 2, 3,4 slots Exhaust: Perforation Ø4,5mm, 51% free passage
	Available panel sizes	594x594, 669x669mm
	Plenum	Double plenum with supply and return connection
MATERIAL	Frontplate	Powder coated sheet steel metal
	Standard finishing	Powder coating RAL9010
	Product finishing options	Powder coating RAL of choice
	Plenum	Galvanised (275g/m ²) sheet steel
	Spigot plenum	PP/TPE spigot, Class D spigot with double lip seal
	Insulation (optional)	Melamine 6mm
MOUNTING	Mounting options	Standard with mounting eyes (ø 7mm) standard, mounting straps available upon request

QUICK SELECTION

Supply Q _v [m ³ /h]	A [mm]	L _w	
		25 dB(A)	35 dB(A)
TE371	594 x 594	210	285
TE372	594 x 594	325	445
TE373	594 x 594	350	500
TE374	594 x 594	360	525

PRODUCT KEY

TWO WAY SUPPLY SLOT DIFFUSER WITH CENTRAL EXHAUST DIFFUSER AND DOUBLE PLENUM

T	E	3	7	1	-	F	L	S	-	-	0	0	5	9	4	0	5	9	4
---	---	---	---	---	---	---	---	---	---	---	---	---	---	---	---	---	---	---	---

Panel size A (mm)
594, 669

Panel size A (mm)
594, 669

0: Without mounting straps
1: With mounting straps

- : Without damper

-: Non insulated plenum
G: Insulated plenum

S: Side connection

L: Spigot exhaust left
R: Spigot exhaust right

F: Coated

1: 1 slot on each side
2: 2 slots on each side
3: 3 slots on each side
4: 4 slots on each side

TWO WAY SUPPLY SLOT DIFFUSER WITH CENTRAL EXHAUST DIFFUSER

T	E	3	7	1	-	F	0	5	9	4	0	5	9	4
---	---	---	---	---	---	---	---	---	---	---	---	---	---	---

Panel size A (mm)
594, 669

Panel size A (mm)
594, 669

F: Coated

1: 1 slot on each side
2: 2 slots on each side
3: 3 slots on each side
4: 4 slots on each side

WIRE FRAME FILTER

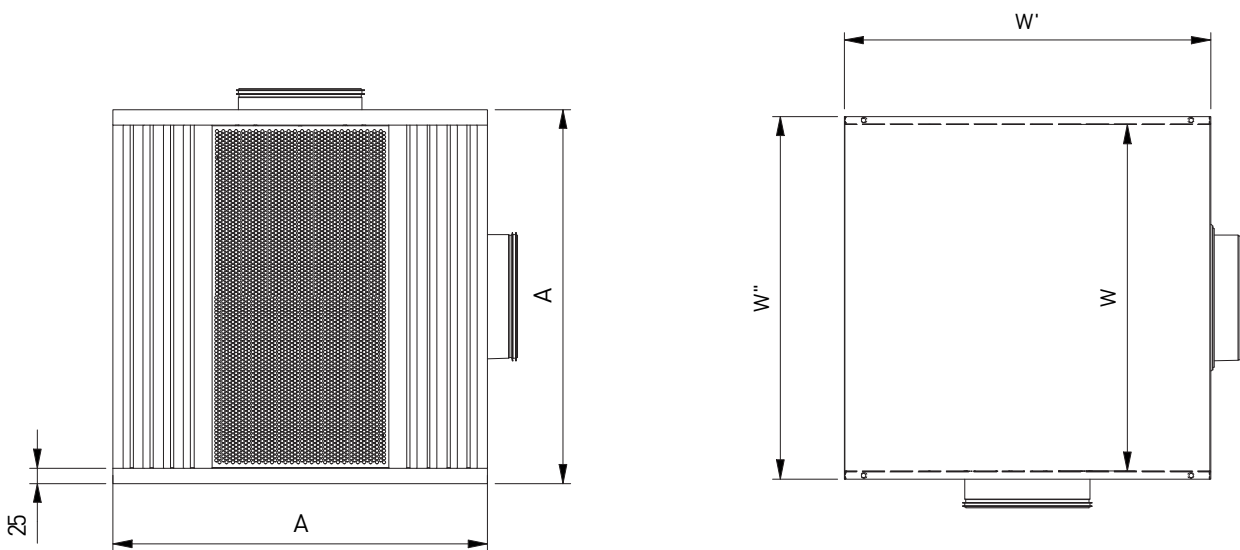
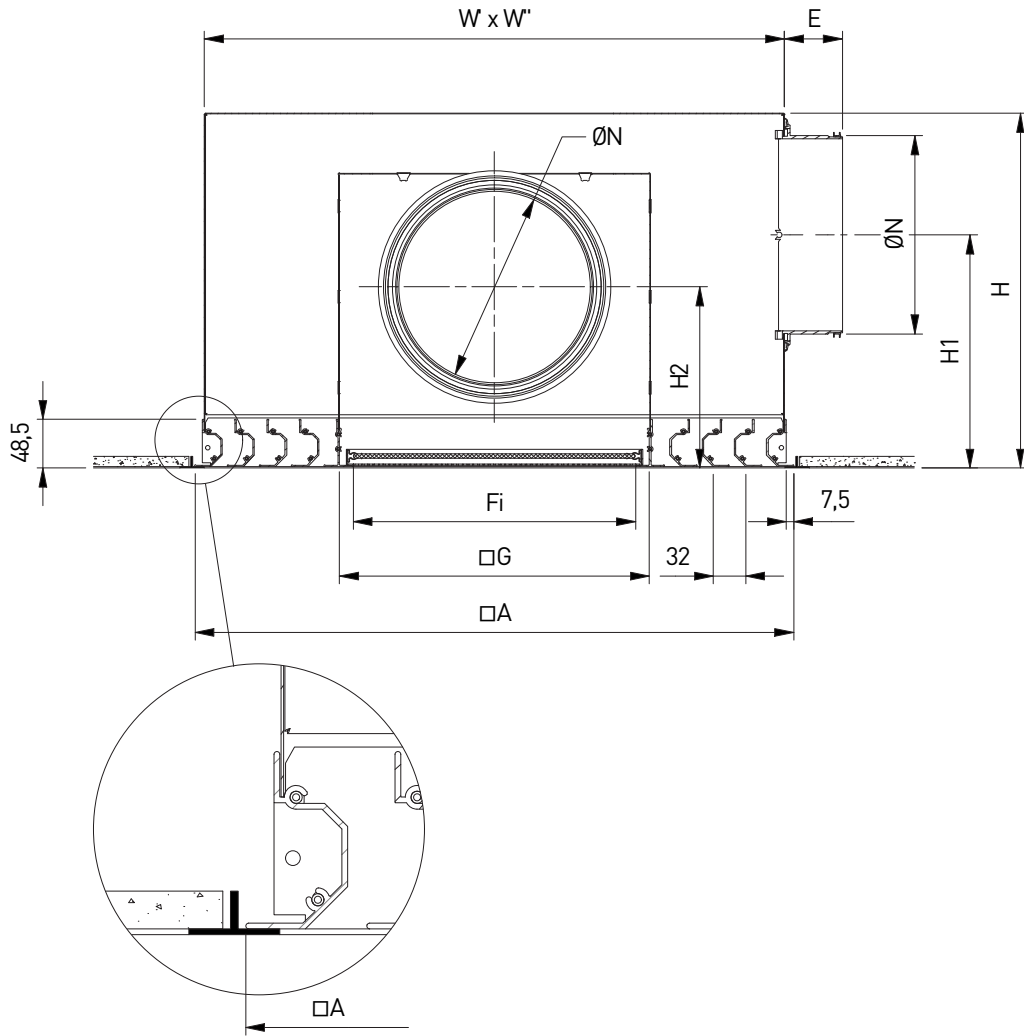
F	I	3	0	5	0	5	3	5	0	4	7	2
---	---	---	---	---	---	---	---	---	---	---	---	---

Filter length (mm)

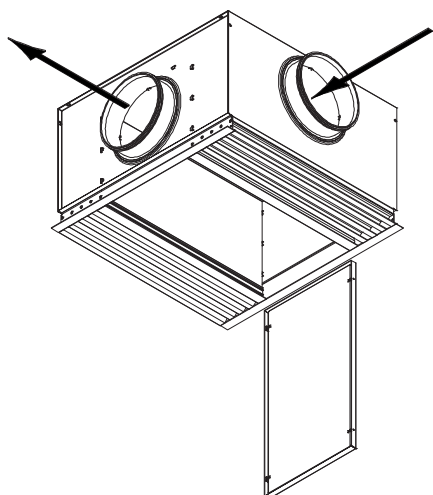
Filter width (mm)

2: Wire mesh filter thickness 5mm - Class G2
3: Wire mesh filter thickness 5mm - Class G3
4: Wire mesh filter thickness 5mm - Class G4

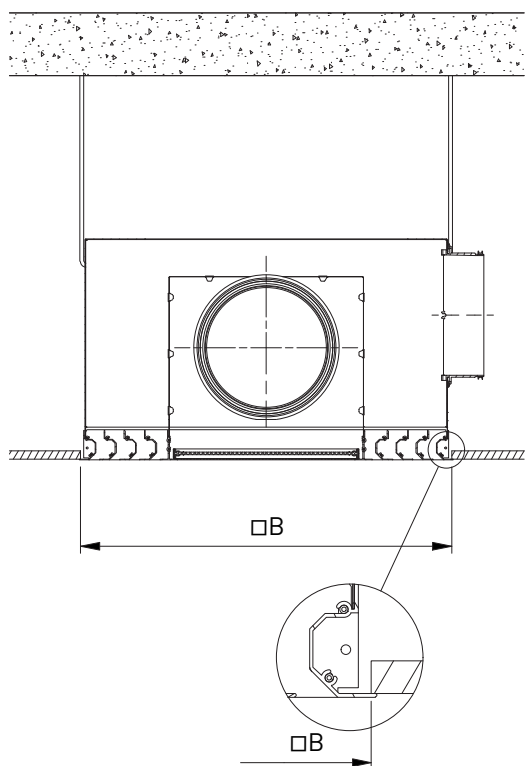
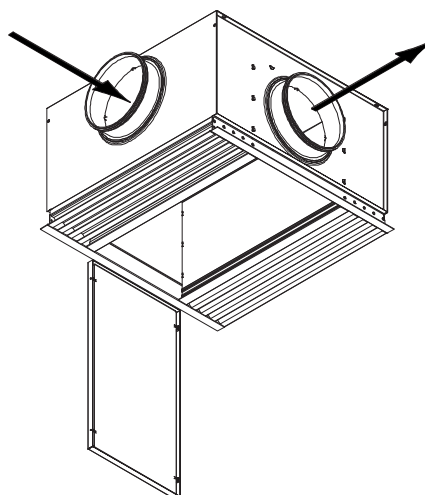
TE374-FLS--0 + FI305



TE370_L



TE370_R



DIMENSIONS

	A	B	E	Fi Filter	G	H	H1	H2	ØN	W	W' x W''
TE371	594	587	58	535 x 472 x 5	500	349	229	172	200	544	574x569
TE372	594	587	58	535 x 408 x 5	436	349	229	172	200	544	574x569
TE373	594	587	58	535 x 344 x 5	372	349	229	172	200	544	574x569
TE374	594	587	58	535 x 280 x 5	308	349	229	172	200	544	574x569
TE371	669	587	58	610 x 548 x 5	575	370	250	173	200	619	649x644
TE372	669	587	58	610 x 484 x 5	511	370	250	173	200	619	649x644
TE373	669	587	58	610 x 420 x 5	447	370	250	173	200	619	649x644
TE374	669	587	58	610 x 356 x 5	383	370	250	173	200	619	649x644

All dimensions in mm