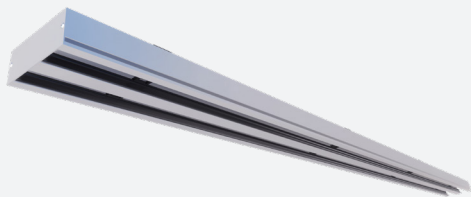


# SLB

## ALUMINIUM ADJUSTABLE SLOT DIFFUSER WITHOUT FLANGE



### VARIANTS

SLB

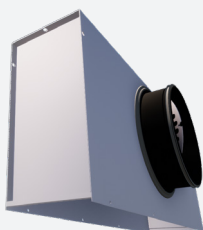
The adjustable slot diffuser type SLB is suitable for the supply and exhaust of cooled and heated air, designed for installation in slat ceilings. Each slot is individually adjustable and is equipped with 2 specially designed discrete deflectors. This results in an ideal air flow pattern that can be adjusted by 180° (vertical and horizontal air flow). Available in several lengths, and in multiple middle and end sections to create a linear diffuser up to any length.

Sleek design with discrete aluminium deflectors (Slot width 25mm)

Frameless version is ideally for installation in slat ceiling

Wide temperature range for both heating and cooling

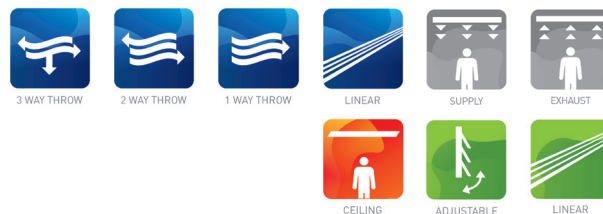
### ACCESSORIES



SPB



BOBSL



### TECHNICAL INFORMATION

APPLICATION	Airflow direction	Lateral, axial, adjustable
	Airflow type	Linear, exhaust or supply
CONSTRUCTION	Shape	Lineair
	Min. Length	300mm
	Max. length	2000mm
	Available steps in length	1mm
	Number of slots	1,2,3,4,5,6
	Flange size	0mm
	Slot width	25mm
	Installation depth	34mm
MATERIAL	Standard material	Extruded aluminium
	Standard finishing	Satin anodized 11µm
	Product finishing options	Powder coating RAL
	Deflectors	Powder coated extruded aluminium
	Deflector fixation piece	POM
MOUNTING	Mounting options	Fixed mounting on SPB plenum box
PLENUM	Material	Galvanised (275g/m²) steel sheet, PP/TPE spigot
	Optional insulation	Melamine 6mm
	Spigot	Class D spigot with double lip seal
	Volume control	Optional perforated volume flow control disk inside the spigot
	Mounting options	Mounting eyes (Ø7mm) standard, mounting brackets available upon request

### QUICK SELECTION

Supply Q <sub>v</sub> [m³/h]		L [mm]			
	L <sub>w</sub>	600	1000	1500	2000
SLB-1	25 dB(A)	64	99	138	174
	35 dB(A)	91	140	195	246
SLB-2	25 dB(A)	137	212	296	374
	35 dB(A)	192	296	414	524
SLB-3	25 dB(A)	166	256	356	450
	35 dB(A)	235	362	504	637
SLB-4	25 dB(A)	206	320	449	569
	35 dB(A)	286	442	619	786
SLB-5	25 dB(A)	263	406	567	718
	35 dB(A)	368	568	793	1004
SLB-6	25 dB(A)	348	535	744	939
	35 dB(A)	494	760	1058	1336

### EFFECTIVE AIR DISCHARGE AREA

Supply A <sub>k</sub> [m²/m]	SLB-1	SLB-2	SLB-3	SLB-4	SLB-5	SLB-6
	0.0152	0.0246	0.0339	0.0432	0.0623	0.0748

PRODUCT KEY

SLOT DIFFUSER WITHOUT FLANGE SLB											
S	L	B	1	2	-	-	1	2	0	0	
<div>Slot length L (mm): From 300 to 2000mm, per 1mm</div> <div>-: Naturel anodised F: Coated</div> <div>-: Standard E: End piece M: Intermediate piece</div> <div>1: 1 slot (1 to 6 slots)</div> <div>0: Without deflectors, without spacers 1: Black deflectors RAL9005 MATT, black spacers 2: White deflectors RAL9010, white spacers 3: White deflectors RAL9016 MATT, white spacers 4: White deflectors RAL9003 MATT, white spacers 5: Deflectors painted in color by choice, black spacers 6: Deflectors painted in color by choice, white spacers</div>											

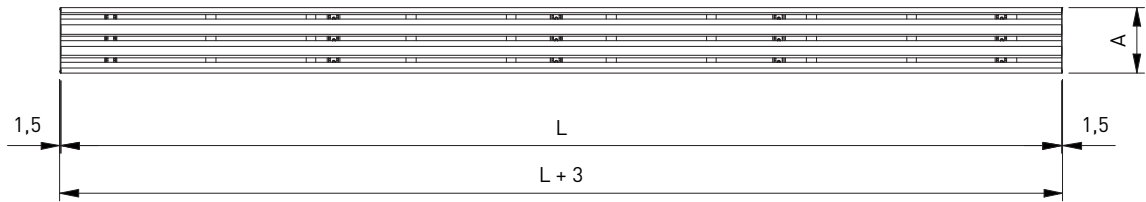
PLENUM SPB FOR DIRECT MOUNTING ON SLOT DIFFUSER SLB																	
S	P	B	0	2	-	S	-	-	0	0	1	6	0	1	2	0	0
<div>Nominal diameter (mm): 80, 100, 125, 160, 200, 250, or 315 Slot length &lt;=1200: 1 diam- eter Slot length &gt;=1201: 2 diam- eters</div> <div>0: Without mounting straps 1: With mounting straps</div> <div>-: Without damper D: With damper</div> <div>-: Non insulated plenum G: Insulated plenum H: Half insulated plenum</div> <div>S: Side connection</div> <div>-: Standard L: End piece left (looking at plenum front into the inlet of the connection collar) M: Intermediate piece R: End piece right (looking at plenum front into the inlet of the connection collar)</div> <div>1: 1 slot (1 to 6 slots)</div>																	

PRODUCT KEY

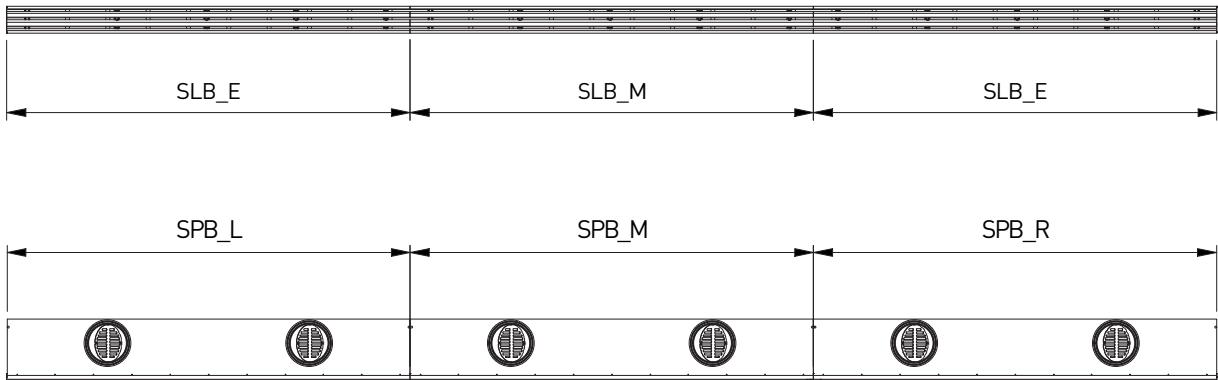
SLOT DIFFUSER SLB WITH PLENUM SPB (MOUNTED)															
S	L	B	1	2	-	-	S	-	-	0	1	2	0	0	
											Slot length L (mm): From 300 to 2000mm, per 1mm				
											0: Without mounting straps 1: With mounting straps				
											-: Without damper D: With damper				
											-: Non insulated plenum G: Insulated plenum H: Half insulated plenum				
											S: Side connection				
											-: Naturel anodised F: Coated				
											-: Standard L: End piece left (looking at plenum front into the inlet of the connection collar) M: Intermediate piece R: End piece right (looking at plenum front into the inlet of the connection collar)				
											1: 1 slot (1 to 6 slots)				
											0: Without deflectors, without spacers 1: Black deflectors RAL9005 MATT, black spacers 2: White deflectors RAL9010, white spacers 3: White deflectors RAL9016 MATT, white spacers 4: White deflectors RAL9003 MATT, white spacers 5: Deflectors painted in color by choice, black spacers 6: Deflectors painted in color by choice, white spacers				

DUMMY PLATE BOBSL FOR SLOT DIFFUSER SLB (DIRECT MOUNTING)											
B	0	B	S	L	0	2	1	2	0	0	
							Length dummy plate (mm): From 20 to 2000mm, per 1mm				
							1: 1 slot (1 to 6 slots)				

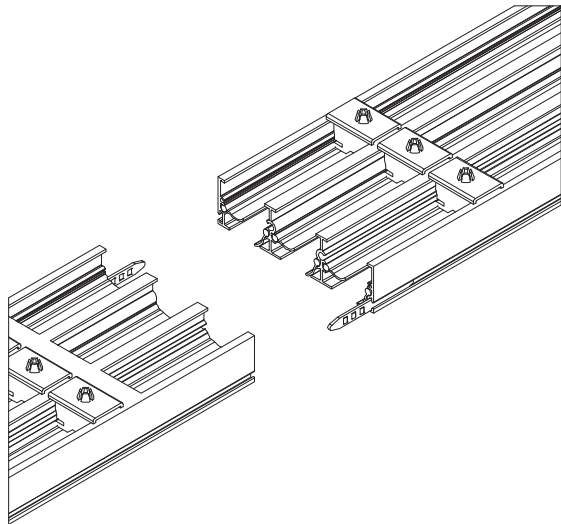
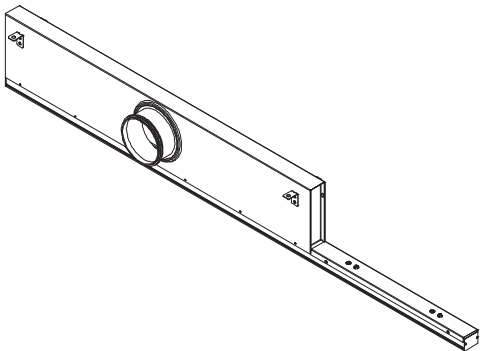
SLB



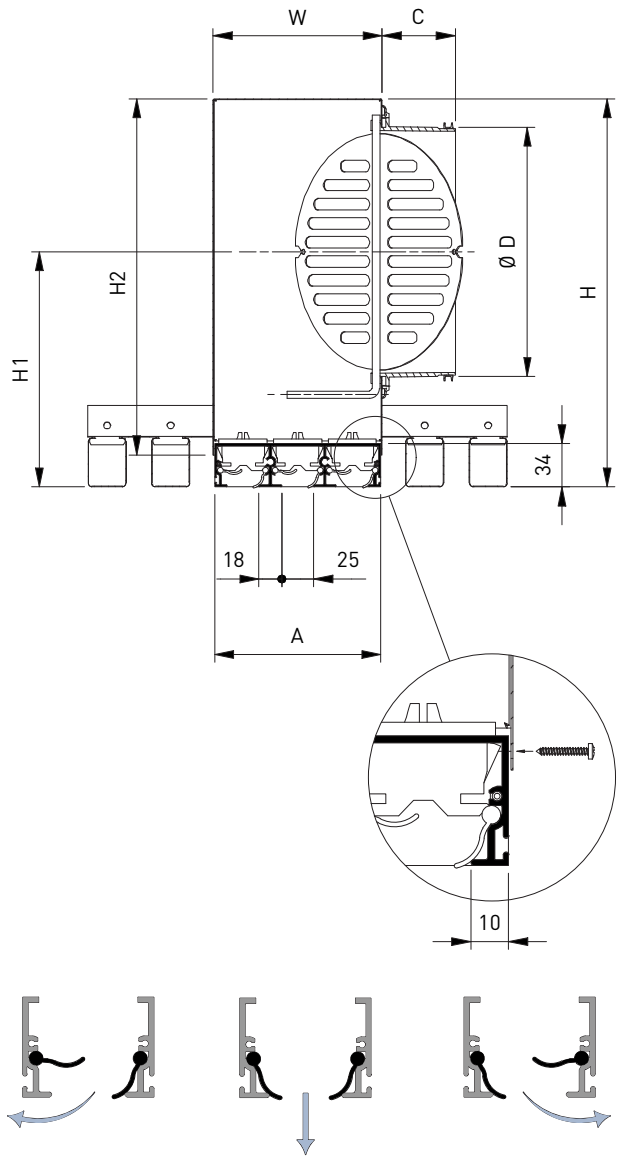
LINEAR: END PIECES AND INTERMEDIATE PIECES



SLB11-F/1500  
+SPB01LS--1/125/1000  
+BOBSL01/500



SLB + SPB



DIMENSIONS

	Number of slots - SLB + SPB					
	1	2	3	4	5	6
A	45	88	131	174	217	260
C	58	58	58	58	78	78
ØD	123	158	198	198	248	248
H	205	255	305	305	355	355
H1	123	155	185	185	210	210
H2	180	230	280	280	330	330
W	46	89	132	175	219	262

All dimensions in mm

L <= 1200: 1 diameter  
L >= 1201: 2 diameters

AIRFLOW DIRECTION