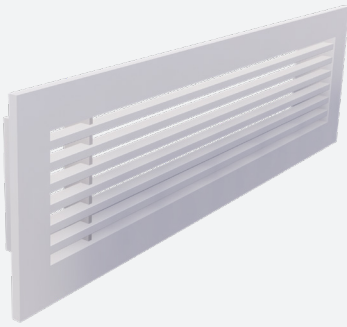


A-600

ALUMINIUM BAR GRILLE FOR WALL MOUNTING



VARIANTS

A-600, A-610, A-620, A-630, A-640, A-650, A-660, A-670,

Bar grille, suitable for the supply and exhaust of cooled or heated air, with straight bars or with 15° deflection. The grille is suitable for wall mounting. Multiple frame executions and mounting options are available. Installation is possible with or without mounting frame (GR001). Execution in aluminium, standard satin anodised finish.

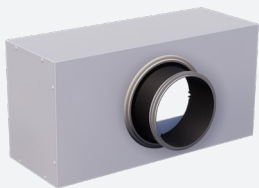
Architectural finish

Fixed bars, center distance between bars 12,5mm or 16 2/3mm

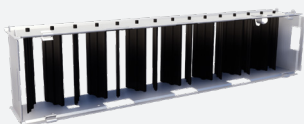
Execution in aluminium, standard satin anodised finish

Easy to install

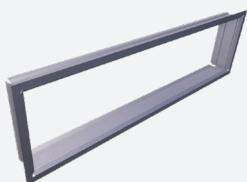
ACCESSORIES



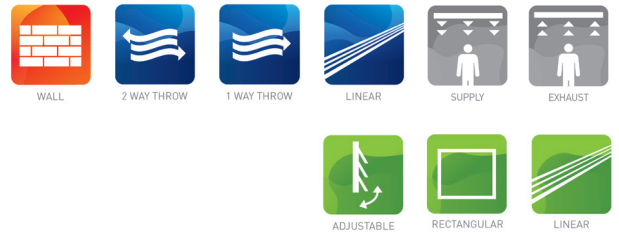
OP100



GT007



GR001



TECHNICAL INFORMATION

APPLICATION	Type	Linear, exhaust or supply
	Direction	Horizontal, fixed bars
CONSTRUCTION	Center distance between bars	12,5mm or 16 2/3mm
	Thickness of frame	1,5mm -> 6mm
	One row horizontal fixed bars	A-600, A-620
	Min. length	100mm
	Max. length	2000mm
	Available steps in length	1mm
	Min. height	37,5mm
	Max. height	1000mm
	Available steps in height	12,5mm
	Installation depth	29mm -> 45mm
	One row horizontal fixed bars + rear adjustable vertical vanes	A-610, A-630
	Min. length	100mm
Max. length	2000mm	
Available steps in length	25mm	
Min. height	75mm	
Max. height	625mm	
Available steps in height	25mm	
Installation depth	29mm -> 43mm	
MATERIAL	Standard material	Anodized aluminium
	Standard finishing	Satin anodized 11µm
	Product finishing options	Powder coating RAL of choice
MOUNTING	Mounting options	Friction springs, concealed screw fixing, screw fixing

QUICK SELECTION

Supply/Exhaust Q_v [m ³ /h]		L [mm]												
H [mm]	L_w	150	200	250	300	400	500	600	700	800	900	1000	1100	1200
50	25 dB(A)	32	42	51	60	78	94	109	123	137	150	163	175	187
	35 dB(A)	52	68	84	98	127	153	177	201	223	244	265	285	304
75	25 dB(A)	51	67	82	96	124	150	174	197	219	239	259	279	297
	35 dB(A)	83	109	134	157	202	244	283	321	356	390	423	454	484
100	25 dB(A)	-	90	110	129	166	201	233	264	293	321	347	373	398
	35 dB(A)	-	146	179	211	271	327	380	430	477	523	566	609	649
150	25 dB(A)	-	-	162	191	245	296	343	389	432	473	512	550	587
	35 dB(A)	-	-	265	312	400	483	561	635	705	772	837	899	959
200	25 dB(A)	-	-	-	-	321	388	450	510	566	620	671	721	769
	35 dB(A)	-	-	-	-	526	635	738	835	927	1015	1099	1181	1260
250	25 dB(A)	-	-	-	-	-	480	557	631	700	766	830	891	951
	35 dB(A)	-	-	-	-	-	788	915	1035	1149	1258	1362	1463	1561
300	25 dB(A)	-	-	-	-	-	574	666	753	836	916	991	1065	1136
	35 dB(A)	-	-	-	-	-	944	1096	1239	1376	1506	1631	1751	1868
400	25 dB(A)	-	-	-	-	-	770	894	1011	1122	1228	1329	1427	1522
	35 dB(A)	-	-	-	-	-	1273	1477	1670	1854	2029	2196	2358	2515
500	25 dB(A)	-	-	-	-	-	984	1142	1290	1432	1566	1695	1820	1940
	35 dB(A)	-	-	-	-	-	1633	1895	2142	2376	2600	2814	3021	3220
600	25 dB(A)	-	-	-	-	-	1220	1415	1598	1773	1939	2099	2252	2401
	35 dB(A)	-	-	-	-	-	2034	2359	2665	2956	3233	3499	3755	4003

EFFECTIVE AIR DISCHARGE AREA

Supply/Exhaust A_f [m ²]	L [mm]												
H [mm]	150	200	250	300	400	500	600	700	800	900	1000	1100	1200
75	0.0045	0.0060	0.0075	0.0090	0.0120	0.0149	0.0179	0.0209	0.0239	0.0269	0.0299	0.0329	0.0359
100	0.0066	0.0087	0.0109	0.0131	0.0175	0.0218	0.0262	0.0306	0.0349	0.0393	0.0437	0.0481	0.0524
150	0.0107	0.0143	0.0178	0.0214	0.0285	0.0356	0.0428	0.0499	0.0570	0.0641	0.0713	0.0784	0.0855
200	0.0148	0.0198	0.0247	0.0297	0.0395	0.0494	0.0593	0.0692	0.0791	0.0890	0.0988	0.1087	0.1186
250	0.0190	0.0253	0.0316	0.0379	0.0506	0.0632	0.0759	0.0885	0.1011	0.1138	0.1264	0.1391	0.1517
300	0.0231	0.0308	0.0385	0.0462	0.0616	0.0770	0.0924	0.1078	0.1232	0.1386	0.1540	0.1694	0.1848
400	0.0314	0.0418	0.0523	0.0627	0.0837	0.1046	0.1255	0.1464	0.1673	0.1882	0.2092	0.2301	0.2510
500	0.0396	0.0529	0.0661	0.0793	0.1057	0.1322	0.1586	0.1850	0.2115	0.2379	0.2643	0.2907	0.3172
600	0.0479	0.0639	0.0799	0.0958	0.1278	0.1597	0.1917	0.2236	0.2556	0.2875	0.3195	0.3514	0.3834

PRODUCT KEY

GRILLE

A	D	6	0	0	-	-	0	6	0	0	0	3	0	0
---	---	---	---	---	---	---	---	---	---	---	---	---	---	---

Nominal length L (mm):
From 100 to 2000mm, per
1mm

Nominal height H (mm):
From 37,5 to 1000mm, per
12,5mm

-: Naturel anodised
F: Coated

-: Grille in one piece
E: End piece (for 0° deflection)
M: Intermediate piece
L: Left end piece (for 15° deflection)
R: Right end piece (for 15° deflection)
C: Corner piece 0° deflection or 15° inwards, inner dimension 300x300mm nominal (painted, not combinable with flow equalizer, damper or acces door)
D: Corner piece 15° deflection outwards, inner dimension 300x300mm nominal (painted, not combinable with flow equalizer, damper or acces door)

0: Grille without damper
4: With acces door right (only for grille in one piece)
5: With acces door left (only for grille in one piece)
7: With damper GT007
9: With damper GT009 (not combinable with flow equalizer or concealed screw fixing)

0: Step 12.5mm, deflection 0°, no flow equalizer
1: Step 12.5mm, deflection 0°, with flow equalizer
2: Step 12.5mm, deflection 15°, no flow equalizer
3: Step 12.5mm, deflection 15°, with flow equalizer
4: Step 16 2/3mm, deflection 0°, no flow equalizer
5: Step 16 2/3mm, deflection 0°, with flow equalizer
6: Step 16 2/3mm, deflection 15°, no flow equalizer
7: Step 16 2/3mm, deflection 15°, with flow equalizer

A: Frame width 20mm, friction spring fixing
B: Frame width 20mm, concealed screw fixing
C: Only core, without frame (Not combinable with flow equalizer, damper or acces door. Only for grille in one piece)
D: Frame width 25mm, friction spring fixing
E: Frame width 25mm, concealed screw fixing
F: Frame width 25mm, screw fixing
K: Frame width 20mm, straight, friction spring fixing (without mounting frame GR001)
M: Frame width 35mm, screw fixing
N: Frame width 35mm, fixing with friction springs
V: Frame width 35mm, concealed screw fixing

- Option with GR001 not available in height 37.5mm
- Flow equalizer only available in height from 75 to 625mm in steps of 25mm and length from 100 to 2000mm in steps of 25mm
- Option 'step 16 2/3mm' only available in height from 50 to 1000mm in steps of 25mm
- Acces door only combinable with '4 bars per 50mm (step 12.5mm)' without flow equalizer
- Damper GT009 only available in height 37.5, 50, en 62.5mm and length <= 750mm
- Damper GT009 for intermediate piece only available in length = 750mm
- Damper GT007 only available in height from 75 to 600mm in steps of 25mm and length from 100 to 2000mm in steps of 25mm
- Grille with acces door, height >= 100mm and length >= 400mm
- Corner piece (standard 90°) only available with inner dimension 300x300mm

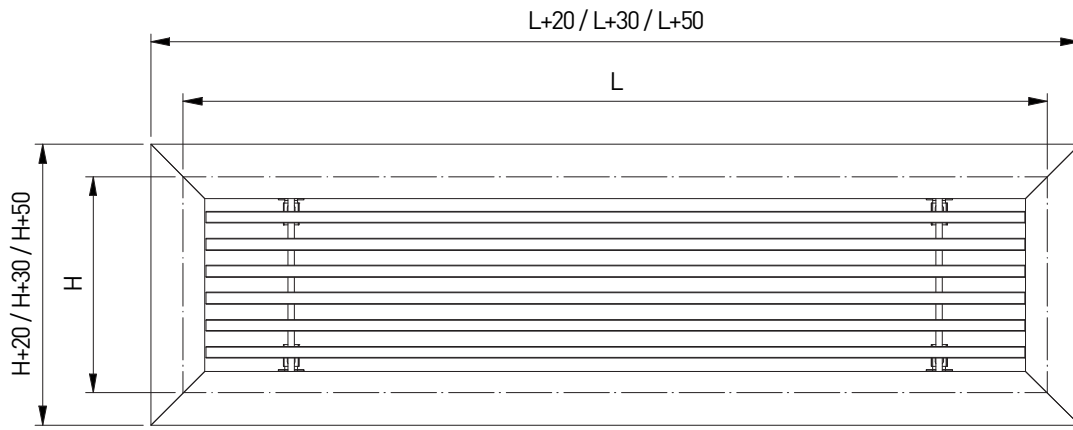
MOUNTING FRAME

G	R	0	0	1	-	0	6	0	0	0	3	0	0
---	---	---	---	---	---	---	---	---	---	---	---	---	---

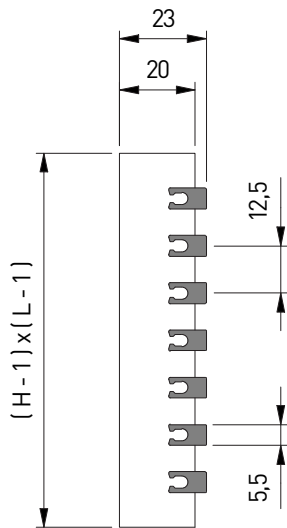
Nominal length L (mm):
From 75 to 2000mm, per
1mm

Nominal height H (mm):
From 50 to 2000mm, per
1mm

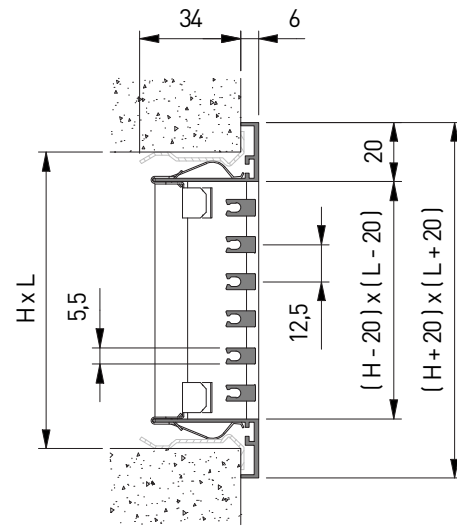
-: In one piece
E: End piece
M: Intermediate piece



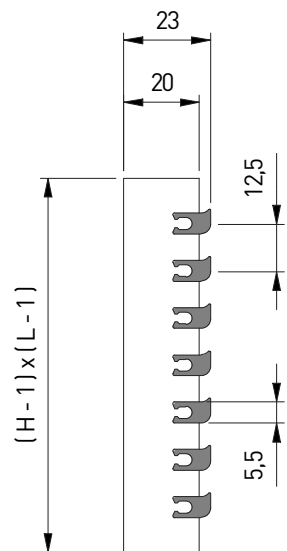
AC600



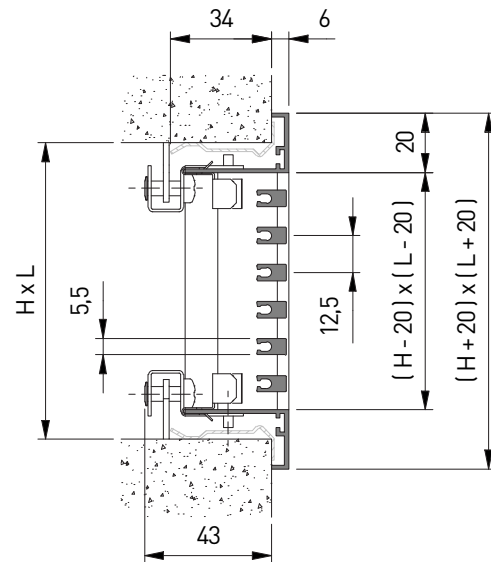
AA600 + GR001



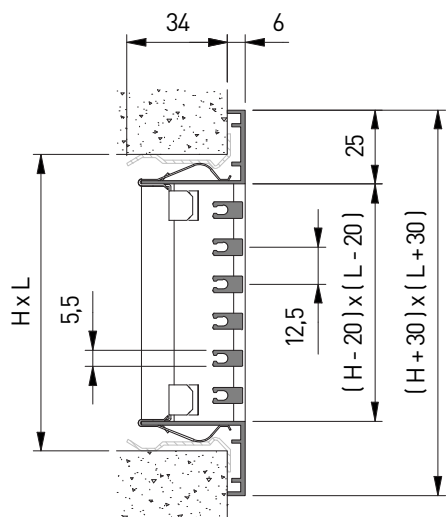
AC620



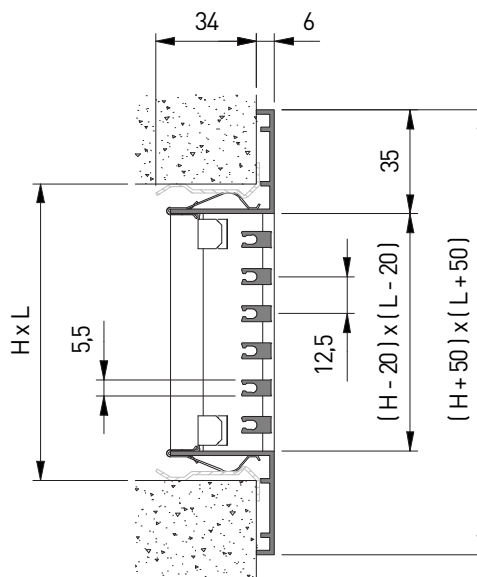
AB600 + GR001



AD600 + GR001

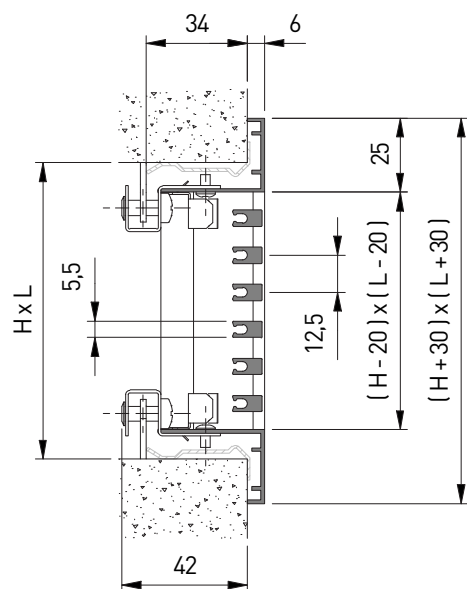


AN600 + GR001

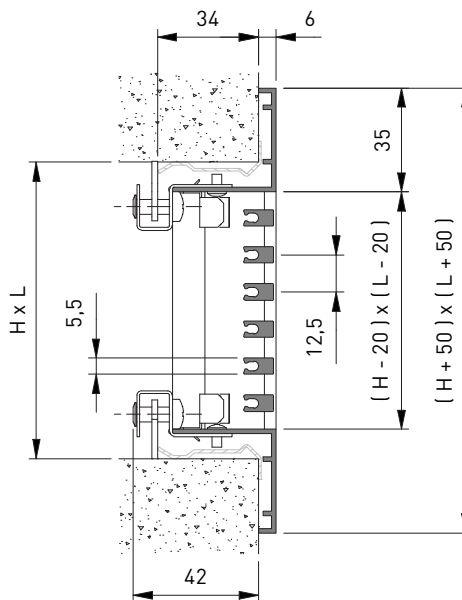


A-600

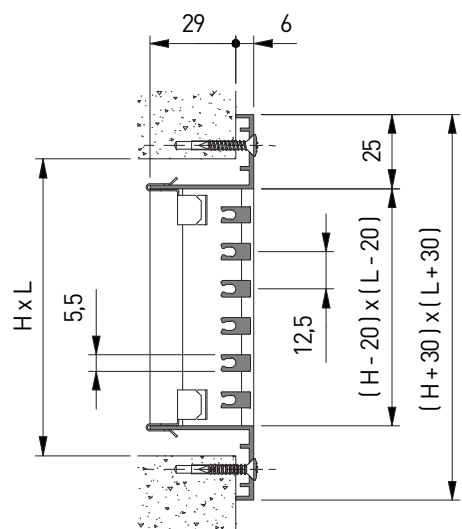
AE600 + GR001



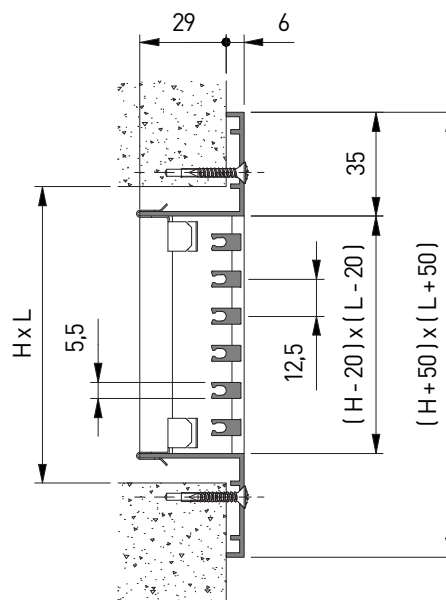
AV600 + GR001



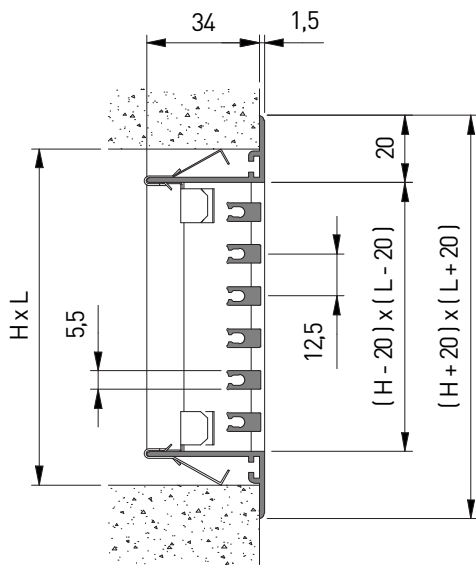
AF600



AM600

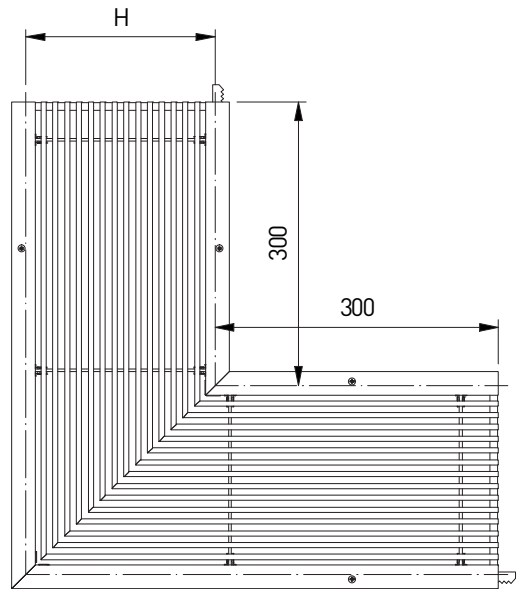


AK600

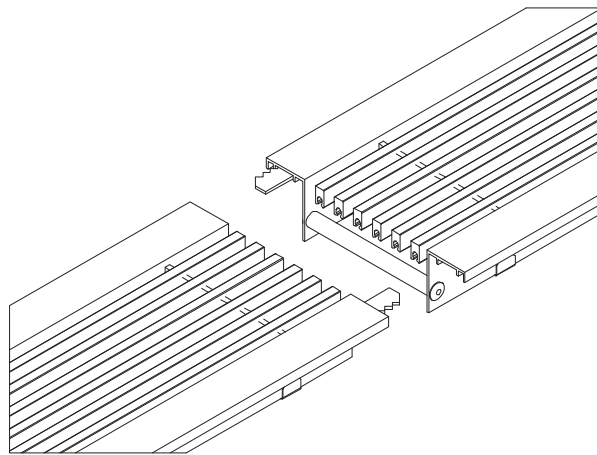
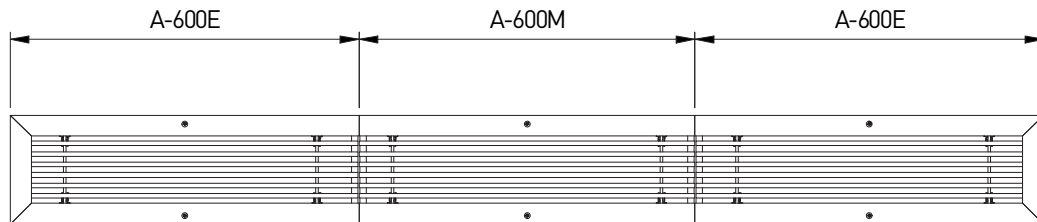


A-600C

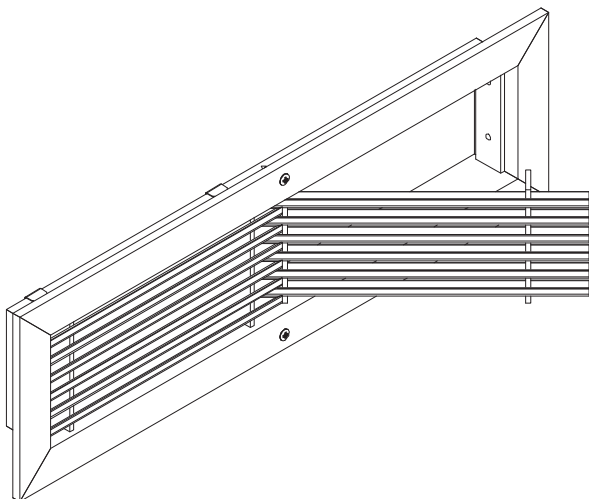
A-600



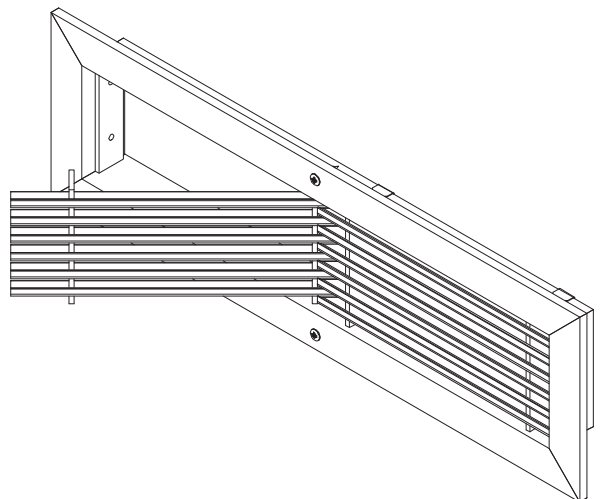
LINEAR: END PIECES AND INTERMEDIATE PIECES

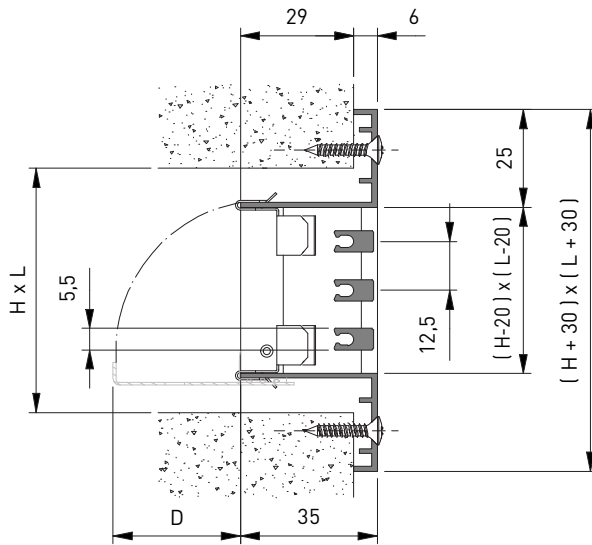
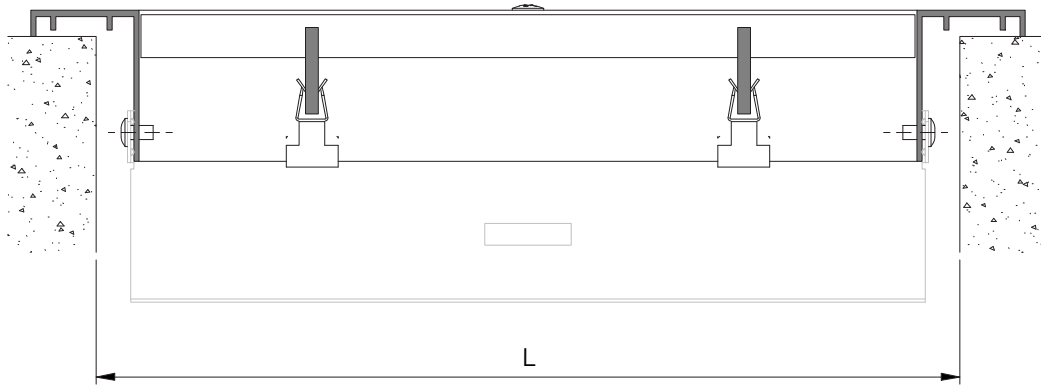


A-624



A-625

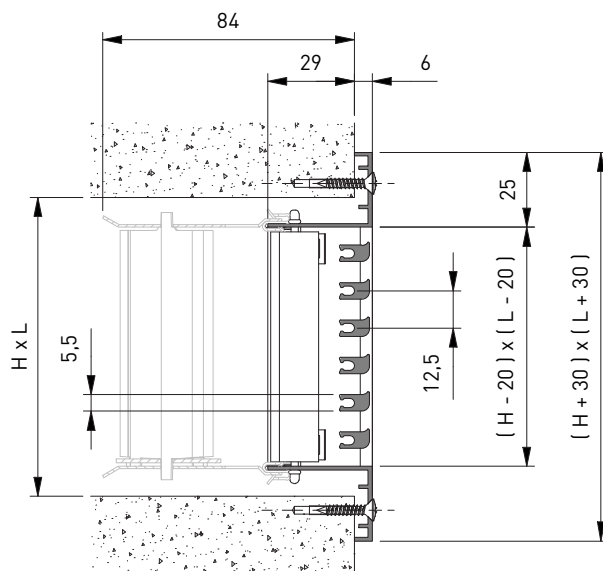
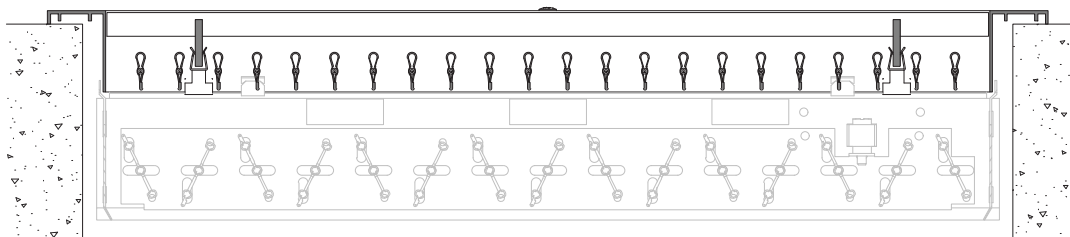




DIMENSIONS

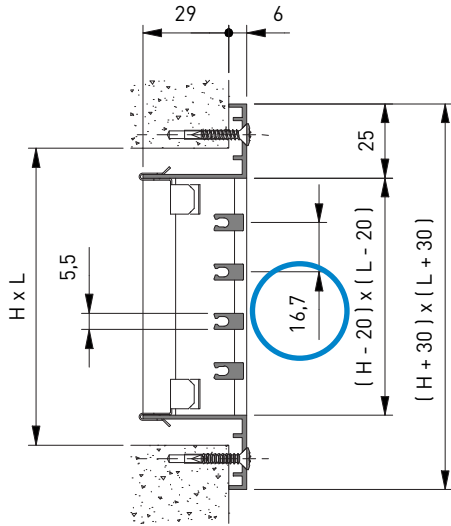
H	D
37.5	8
50	20
62.5	33

AF637

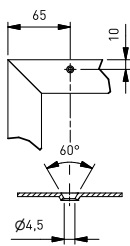


3 BARS PER 50MM (STEP 16 2/3MM)

AF640



SCREW HOLE LOCATION IN THE FRAME



	Nom.L 150		525		1025		1500		2000	
Nom. H										
150										
525										
1000										