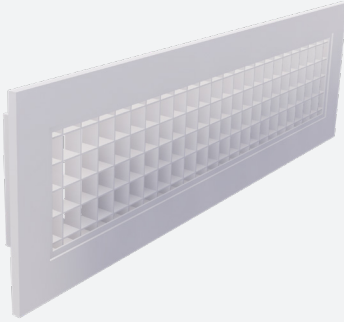
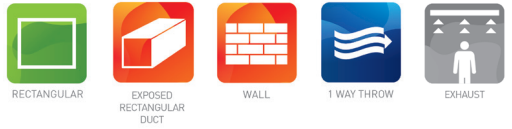


A-700

ALUMINIUM GRILLE WITH GRID CORE



VARIANTS

A-770, A-780

Exhaust grille with fixed grid core with straight links (A-780) or with links of 45° deflection (A-770). The grille is used for the exhaust of large quantities of air with minimal pressure loss in facilities such as offices, warehouses, shopping centres, ... It can be mounted in the wall or in the ceiling. Margins natural tone anodised and grid core aluminium mill finish.

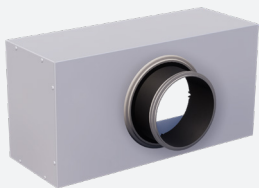
Exhaust grille with high free passage ca. 85%

With straight links or with links of 45° deflection

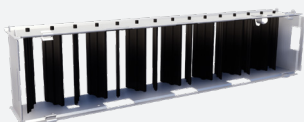
Margins natural tone anodised and grid core aluminium mill finish

Links of 15 x 15mm

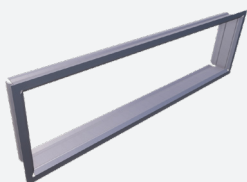
ACCESSORIES



OP100



GT007



GR001

TECHNICAL INFORMATION

APPLICATION	Type	Exhaust
CONSTRUCTION	A-780	Fixed straight mesh 15x15mm
	A-770	Fixed inclined mesh 15x15mm, 45° deflection
	Min. length	100mm
	Max. length	2000mm
	Available steps in length	1mm
	Min. height	100mm
	Max. height	1220mm
	Available steps in height	1mm
MATERIAL	Standard material	Frame: anodized aluminium Grid core: mill finish aluminium
	Standard finishing	Frame: satin anodized 11µm Grid core: untreated aluminium
	Product finishing options	Powder coating RAL of choice
MOUNTING	Mounting options	Friction springs, concealed screw fixing, screw fixing

QUICK SELECTION

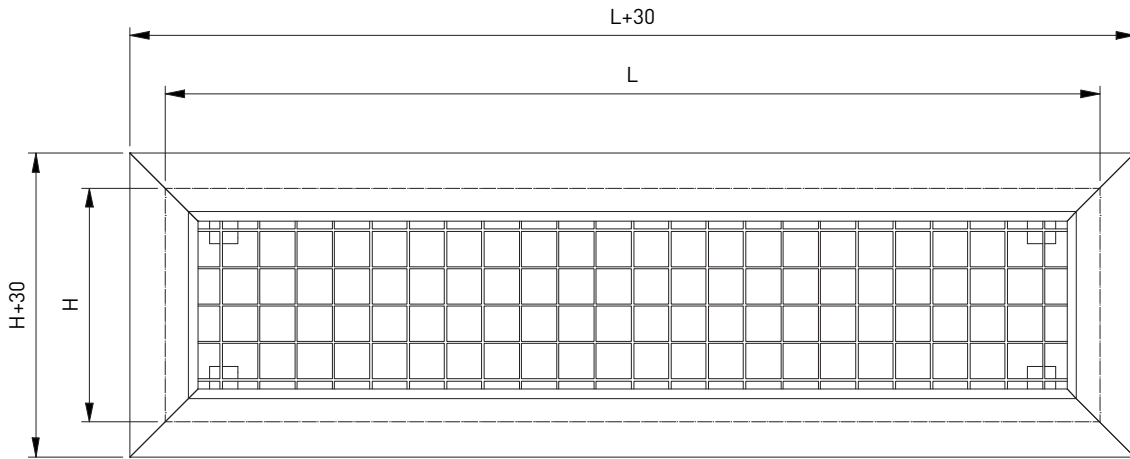
Exhaust Q _v [m³/h]		L [mm]							
H [mm]	L _w	200	250	300	400	500	600	800	1000
100	25 dB(A)	152	180	210	-	-	-	-	-
	35 dB(A)	200	237	277	-	-	-	-	-
150	25 dB(A)	210	279	323	429	548	-	-	-
	35 dB(A)	277	369	425	564	720	-	-	-
200	25 dB(A)	279	360	429	548	695	834	-	-
	35 dB(A)	369	475	564	720	918	1099	-	-
300	25 dB(A)	-	-	634	834	1038	1223	1579	1948
	35 dB(A)	-	-	836	1099	1365	1612	2081	2568
400	25 dB(A)	-	-	-	1107	-	1579	2096	2538
	35 dB(A)	-	-	-	1459	-	2081	2762	3354
500	25 dB(A)	-	-	-	-	-	1948	2538	3130
	35 dB(A)	-	-	-	-	-	2598	3354	4126

PRODUCT KEY

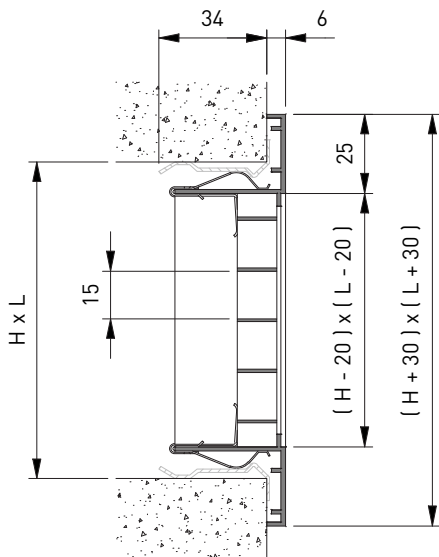
GRILLE														
A	D	7	8	0	-	-	0	6	0	0	0	3	0	0
								Nominal length L (mm): From 100 to 2000mm, per 1mm				Nominal height H (mm): From 100 to 1220mm, per 1mm		
								-: Naturel anodised F: Coated						
				0: Grille without damper 7: With damper GT007										
				7: Inclined mesh 15x15mm, 45° deflection 8: Straight mesh 15x15mm										
D: Frame width 25mm, friction springs E: Frame width 25mm, concealed screw fixing F: Frame width 25mm, screw fixing														

- GT007 only available with square mesh (type A-787)
- GT007 only available in multiples of 25mm in length as well as in height, L <= 1200mm, H <= 600mm

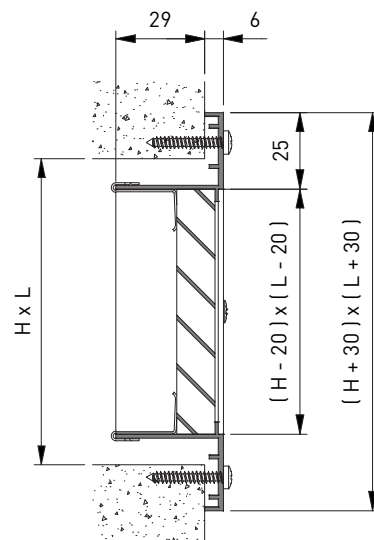
MOUNTING FRAME													
G	R	0	0	1	-	0	6	0	0	0	3	0	0
								Nominal length L (mm): From 75 to 2000mm, per 1mm				Nominal height H (mm): From 50 to 2000mm, per 1mm	
								-: In one piece E: End piece M: Intermediate piece					



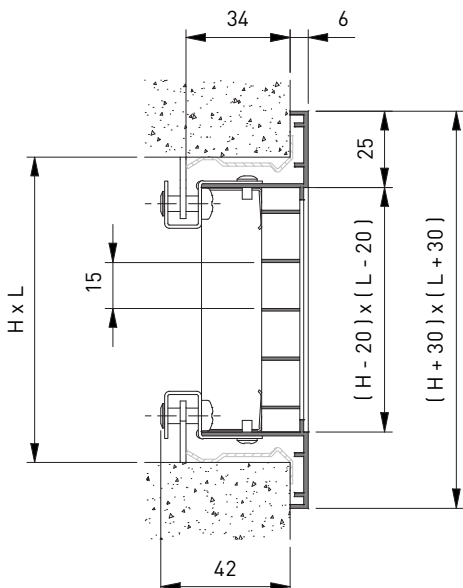
AD780 + GR001



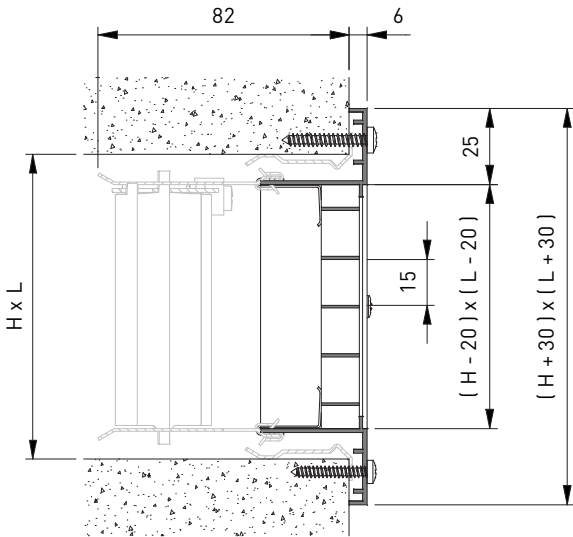
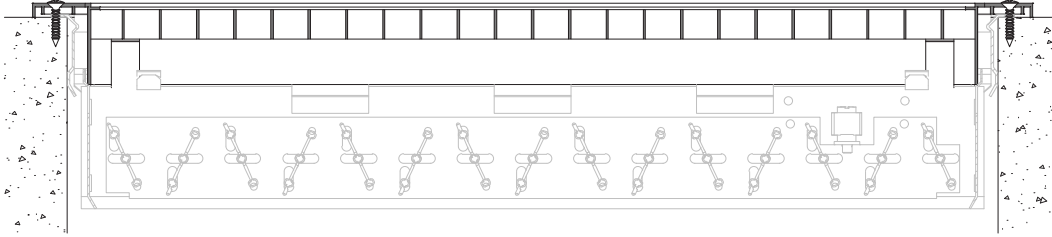
AF770



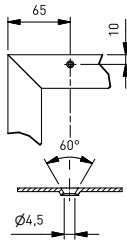
AE780 + GR001



AF787



SCREW HOLE LOCATION IN THE FRAME



	Nom.L 150	525	1025	1500	2000
Nom. H 150					
Nom. H 525					
Nom. H 1000					