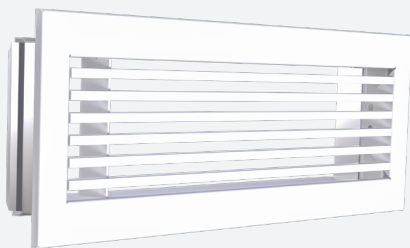


B-600

ALUMINIUM/STEEL BAR GRILLE FOR WALL MOUNTING



VARIANTS

B-600, B-620, B-640, A-660

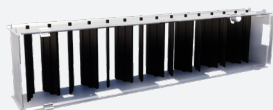
Bar grille, suitable for the supply and exhaust of cooled or heated air, with straight bars or with 15° deflection. The grille is suitable for wall mounting. Multiple mounting options are available. Economical solution with bars in aluminium and frame in steel, standard finish painted white (RAL9010).

Architectural finish

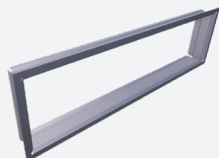
Fixed bars, center distance between bars
12,5mm or 16 2/3mm

Easy to install

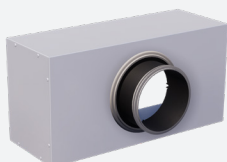
ACCESSORIES



GT007



GR001



OP100



RECTANGULAR



WALL



2 WAY THROW



1 WAY THROW



SUPPLY



EXHAUST

TECHNICAL INFORMATION

APPLICATION	Type	Exhaust or supply
	Direction	Horizontal, fixed bars
CONSTRUCTION	Center distance between bars	12,5mm or 16 2/3mm
	Thickness of frame	5mm
	Longueur min.	150mm
	Longueur max.	2000mm
	Longueur disponible en multiples de	25mm
	Hauteur min.	100mm
	Hauteur max.	1000mm
MATERIAL	Standard material: Bars	Painted aluminium
	Standard material: Frame	Painted steel
	Standard finishing	Powder coating RAL9010
	Product finishing options	Powder coating RAL of choice
MOUNTING	Mounting options	Friction springs, concealed screw fixing, screw fixing

QUICK SELECTION

Supply/Exhaust Q_v [m ³ /h]		L [mm]									
H [mm]	L_w	200	250	300	400	500	600	800	1000	1200	1500
100	25 dB(A)	90	110	129	166	201	233	293	347	398	469
	35 dB(A)	146	179	211	271	327	380	477	566	649	765
150	25 dB(A)	132	162	191	245	296	343	432	512	587	692
	35 dB(A)	216	265	312	400	483	561	705	837	959	1130
200	25 dB(A)	174	213	250	321	388	450	566	671	769	906
	35 dB(A)	284	348	410	526	635	738	927	1099	1260	1484
250	25 dB(A)	-	263	310	398	480	557	700	830	951	1120
	35 dB(A)	-	432	509	653	788	915	1149	1362	1561	1839
300	25 dB(A)	-	-	370	476	574	666	836	991	1136	1337
	35 dB(A)	-	-	609	782	944	1096	1376	1631	1868	2200

EFFECTIVE AIR DISCHARGE AREA

Supply/Exhaust A_f [m ²]		L [mm]									
H [mm]		200	250	300	400	500	600	800	1000	1200	1500
100		0.0087	0.0109	0.0131	0.0175	0.0218	0.0262	0.0349	0.0437	0.0524	0.0654
150		0.0143	0.0178	0.0214	0.0285	0.0356	0.0428	0.0570	0.0713	0.0855	0.1064
200		0.0198	0.0247	0.0297	0.0395	0.0494	0.0593	0.0791	0.0988	0.1186	0.1493
250		-	0.0316	0.0379	0.0506	0.0632	0.0759	0.1011	0.1264	0.1517	0.1887
300		-	-	0.0462	0.0616	0.0770	0.0924	0.1232	0.1540	0.1848	0.2326

PRODUCT KEY

GRILLE

B	D	6	0	0	-	F	0	6	0	0	0	3	0	0
---	---	---	---	---	---	---	---	---	---	---	---	---	---	---

Nominal length L (mm):
From 150 to 2000mm, per 25mm

Nominal height H (mm):
From 100 to 1000mm, per 25mm

F: Coated

--: Grille in one piece

0: Grille without damper
7: With damper GT007

0: Step 12.5mm, deflection 0°, no flow equalizer
2: Step 12.5mm, deflection 15°, no flow equalizer
4: Step 16 2/3mm, deflection 0°, no flow equalizer
6: Step 16 2/3mm, deflection 15°, no flow equalizer

D: Frame width 25mm, friction spring fixing
E: Frame width 25mm, concealed screw fixing
F: Frame width 25mm, screw fixing
K: Frame width 20mm, straight, friction spring fixing (without mounting frame GR001)

MOUNTING FRAME

G	R	0	0	1	-	0	6	0	0	0	3	0	0
---	---	---	---	---	---	---	---	---	---	---	---	---	---

Nominal length L (mm):
From 75 to 2000mm, per 1mm

Nominal height H (mm):
From 50 to 2000mm, per 1mm

--: In one piece

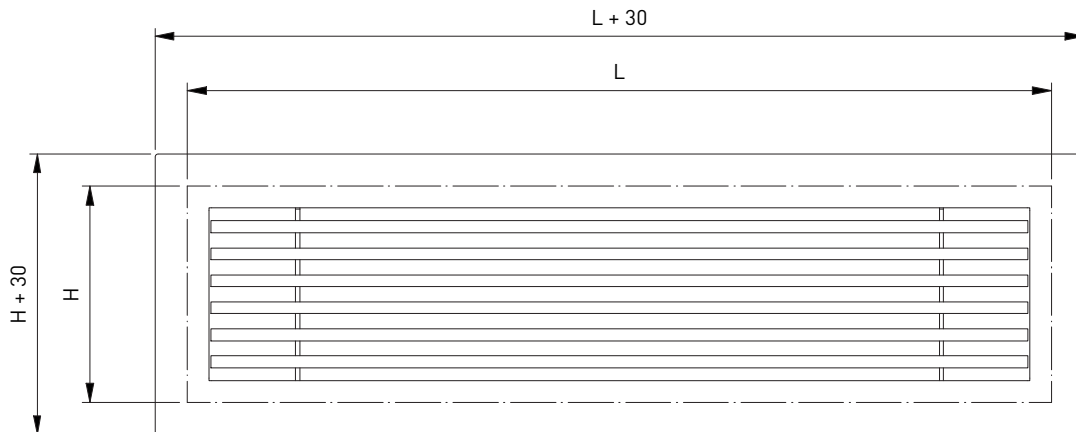
OPPOSED BLADE DAMPER

G	T	0	0	7	0	6	0	0	0	3	0	0
---	---	---	---	---	---	---	---	---	---	---	---	---

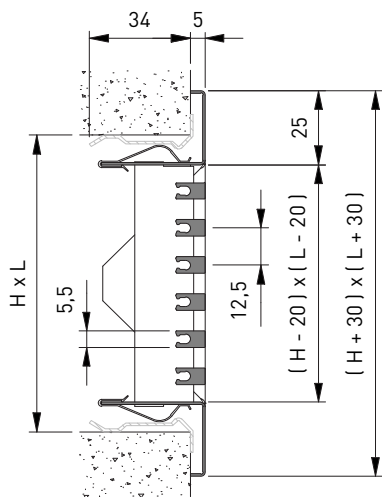
Nominal length L (mm):
From 100 to 625mm, per 25mm

Nominal height H (mm):
From 75 to 600mm, per 25mm

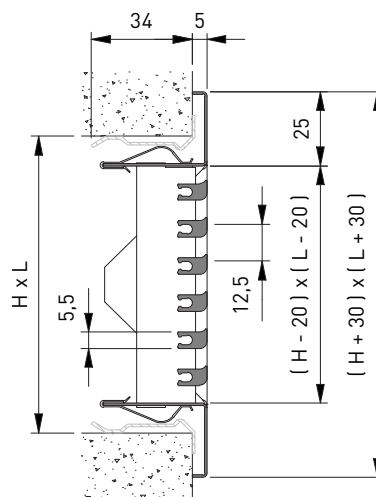
B-600



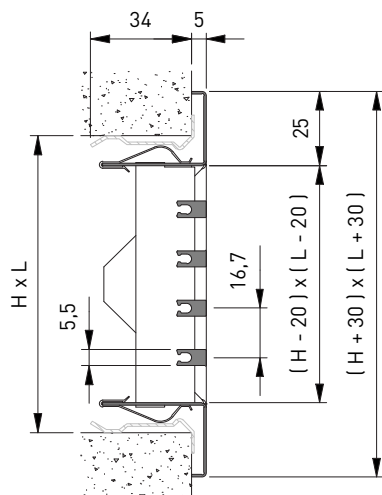
BD600 + GR001



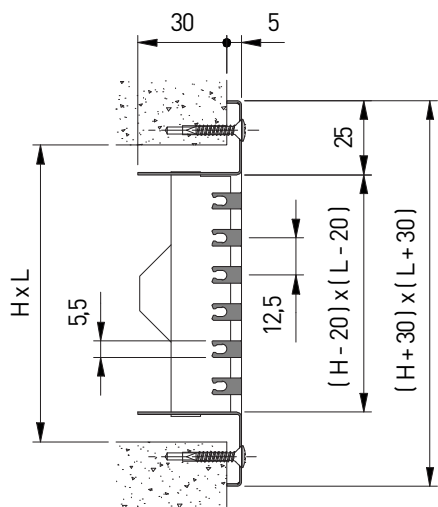
BD620 + GR001



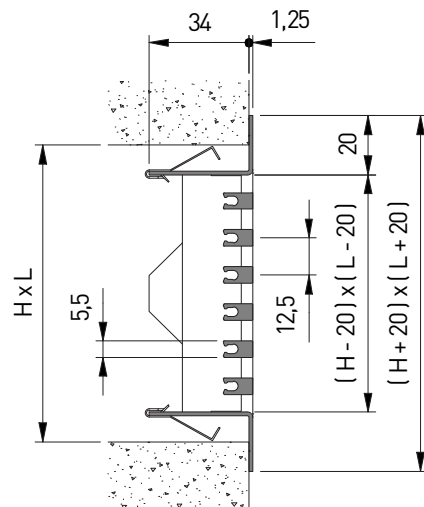
BD640 + GR001



BF600



BK600



BF607

