

## TECHNICAL INFORMATION

APPLICATION	Silencer	
CONSTRUCTION	Shape	Round
	Length	900 mm, 1200 mm
	Min. diameter	100 mm
	Max. diameter	630 mm
MATERIAL	Standard material	Galvanised steel (275 g/m <sup>2</sup> )
	Insulation	Mineral wool 50 mm with polyester fabric
MOUNTING	Connection	Male with SPIRAL®system seal (diam 100 - 250 mm)
		Female (diam 315 - 630 mm)

## SELECTION TABLE

ø (mm)	sound attenuation [dB]							
	63 Hz	125 Hz	250 Hz	500 Hz	1 kHz	2 kHz	4 kHz	8 kHz
100	8	12	19	32	48	51	29	31
125	5	11	18	29	44	47	26	28
160	6	10	16	26	40	42	23	25
200	7	8	13	23	38	38	22	23
250	6	11	17	25	35	34	21	23
315	9	10	14	21	30	24	19	21
355	4	10	15	22	27	22	18	20
400	10	9	14	21	25	20	17	19
500	6	9	13	19	22	17	16	17
630	6	8	12	17	20	14	14	15

## URSIL CIRCULAR DUCT SILENCERS

Variations [URSIL](#)



Round galvanized duct silencers for installation in between ducts. The casing is made from a spiral duct outer layer and perforated sheet steel as inner wall. 50 mm mineral wool is used for sound insulation. The polyester fabric between the perforated inner wall and the mineral wool prevents wool from penetrating into the duct. If a higher noise attenuation is needed, multiple silencers can be mounted successively.



# CIRCULAR DUCT SILENCERS

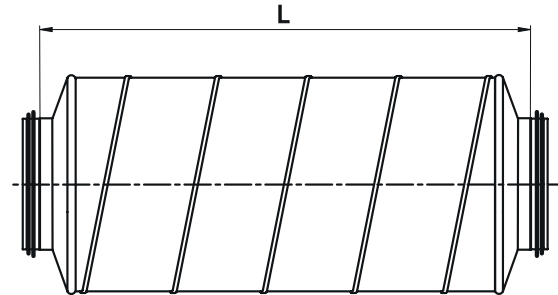
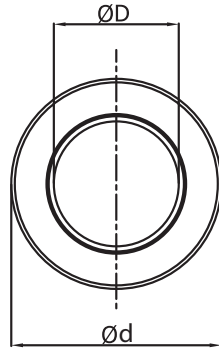
URSIL

## DRAWING

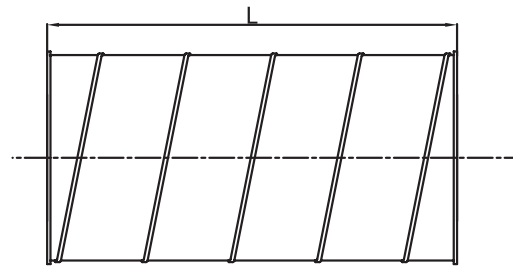
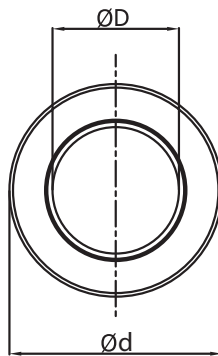
### DIMENSIONS

ØD (mm)	Ød (mm)	L (mm)
100	200	900
125	224	900
160	250	900
200	300	900
250	355	1200
315	400	1200
355	450	1200
400	500	1200
500	600	1200
630	710	1200

URSIL 100, 125, 160, 200, 250  
MALE CONNECTION



URSIL 315, 355, 400, 500, 630  
FEMALE CONNECTION



### HOW TO ORDER

U R S I L - - 0 2 0 0 0 9 0 0

L (mm)

nominal size ØD [mm]