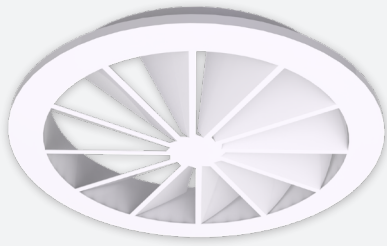


# WR210

CIRCULAR SWIRL DIFFUSER  
WITH FIXED BLADES



## VARIANTS

WR210, WR210\_S, WR210\_T,  
WR200, WR200\_S, WR200\_T

The swirl diffuser type WR210 is equipped with fixed blades. A high induction is obtained through the excellent swirl effect. The flat, simple and sleek design has an aesthetical added-value for designers and building owners.

Non-adjustable air pattern with fixed blades

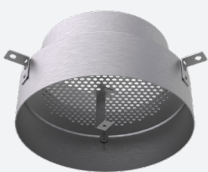
High induction

Flat, sleek, aesthetical design

## ACCESSORIES



WP210S



WP210T



GR003



ROUND



CEILING



SWIRL



SUPPLY



EXHAUST

## TECHNICAL INFORMATION

APPLICATION	Type	Supply or exhaust
	Airflow direction	Horizontal
FRONTPLATE	Standard material	Powder coated sheet steel
	Standard finishing	Powder coating RAL9010
	Product finishing options	Powder coating RAL of choice
	Nominal sizes	Ø100, 125, 160, 200, 250, 315, 400, 500mm
	Mounting options	WR200 without central screw fixing WR210 with central screw fixing
TRANSITION PIECE WP200T/WP210T	Standard material	Brut aluminium
	Mounting options	Equipped with mounting straps
PLENUM WP200S/WP210S	Standard material	Galvanised (275g/m <sup>2</sup> ) sheet steel
	Spigot plenum	PP/TPE spigot, Class D spigot with double lip seal
	Insulation (optional)	Melamine 6mm
	Volume control (optional)	Galvanised perforated volume flow controller with manual operation
	Mounting options	Equipped with mounting eyes (Ø 7mm), mounting straps available upon request

## QUICK SELECTION

ØN [mm]	L <sub>w</sub>	Supply Q <sub>v</sub> [m <sup>3</sup> /h]		
		WR210	WR210 + WP210T	WR210 + WP210S
100	25 dB(A)	29	-	33
	35 dB(A)	43	-	50
125	25 dB(A)	43	48	49
	35 dB(A)	64	67	73
160	25 dB(A)	78	75	73
	35 dB(A)	116	112	114
200	25 dB(A)	128	89	132
	35 dB(A)	191	130	202
250	25 dB(A)	212	160	208
	35 dB(A)	309	234	316
315	25 dB(A)	343	318	263
	35 dB(A)	510	460	409
400	25 dB(A)	574	474	411
	35 dB(A)	857	640	591
500	25 dB(A)	928	-	724
	35 dB(A)	1394	-	1023

## EFFECTIVE AIR DISCHARGE AREA

Supply A <sub>v</sub> [m <sup>2</sup> ]	ØN [mm]							
	100	125	160	200	250	315	400	500
	0,0016	0,0026	0,0045	0,0074	0,0122	0,0204	0,0346	0,0569

PRODUCT KEY

CIRCULAR SWIRL DIFFUSER WITH FIXED BLADES

W	R	2	1	0	-	F	0	2	5	0
---	---	---	---	---	---	---	---	---	---	---

Nominal size ØN (mm):  
100, 125, 160, 200, 250, 315,  
400, 500

F: Coated

0: Without central screw fixing  
1: With central screw fixing

TRANSITION PIECE WITH PERFORATED PLATE FOR AIR DISTRIBUTION

W	P	2	1	0	T	0	2	5	0
---	---	---	---	---	---	---	---	---	---

Nominal size ØN (mm):  
125, 160, 200, 250, 315, 400

0: Supply - with perforated plate, without mounting bracket for central screw fixing  
1: Supply - with perforated plate, with mounting bracket for central screw fixing  
2: Exhaust - without perforated plate, without mounting bracket for central screw fixing  
3: Exhaust - without perforated plate, with mounting bracket for central screw fixing

PLENUM WITH PERFORATED PLATE FOR AIR DISTRIBUTION FOR SWIRL DIFFUSERS WITH CIRCULAR CONNECTION

W	P	2	1	0	S	-	-	0	0	2	5	0	0	2	0	0
---	---	---	---	---	---	---	---	---	---	---	---	---	---	---	---	---

Nominal size ØN (mm):  
100, 125, 160, 200, 250, 315,  
400, 500

Spigot ØD (mm):  
80, 100, 125, 160, 200, 250,  
315, 400

0: Without mounting straps  
1: With mounting straps

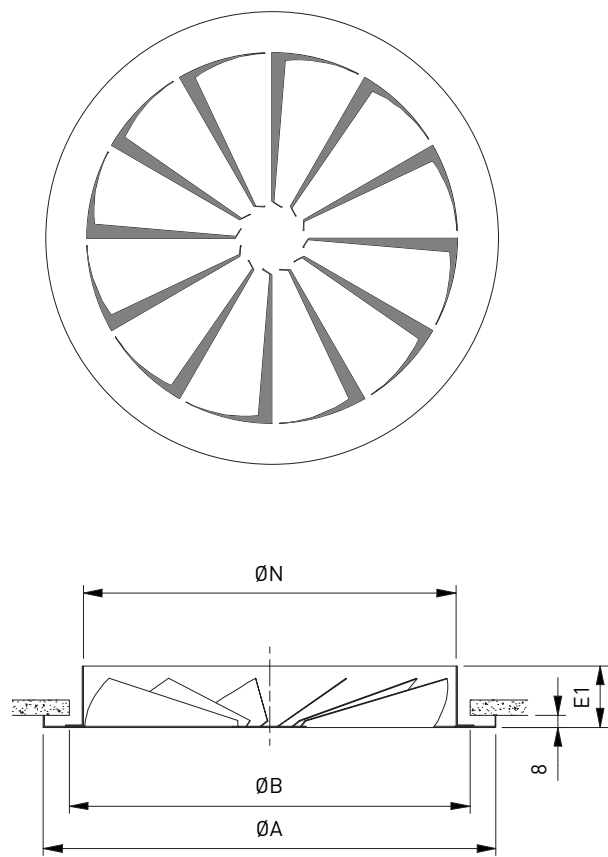
- : Without damper  
D : With damper

-: Non insulated plenum  
G: Insulated plenum

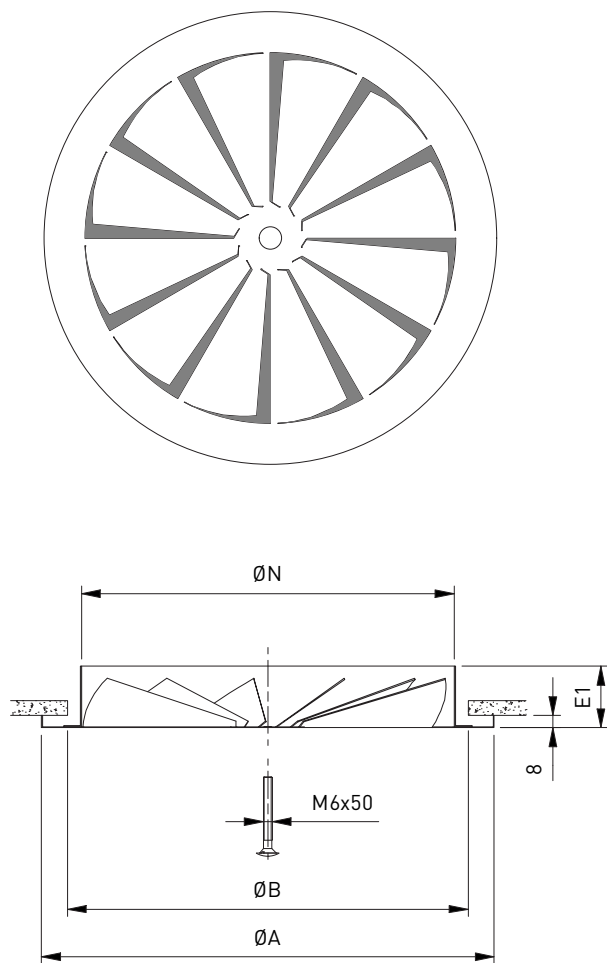
S: Side connection

0: Supply - with perforated plate, without mounting bracket for central screw fixing  
1: Supply - with perforated plate, with mounting bracket for central screw fixing  
2: Exhaust - without perforated plate, without mounting bracket for central screw fixing  
3: Exhaust - without perforated plate, with mounting bracket for central screw fixing

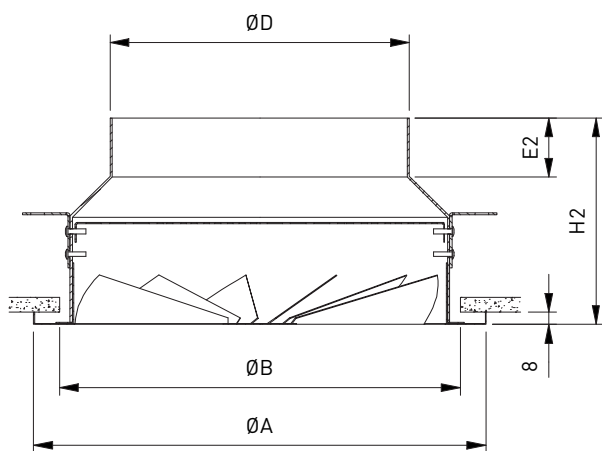
WR200



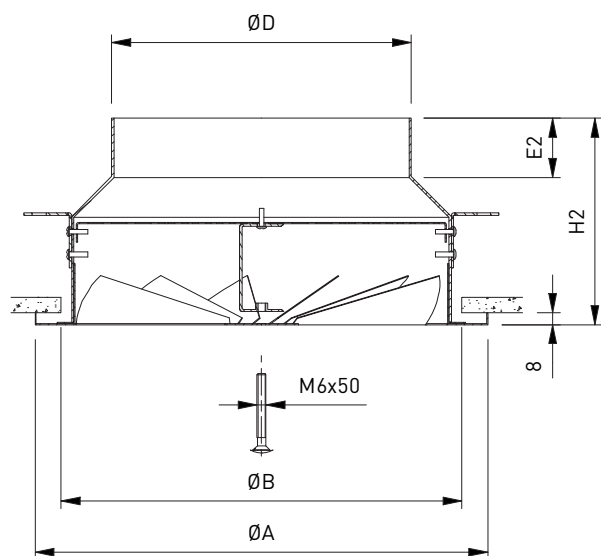
WR210



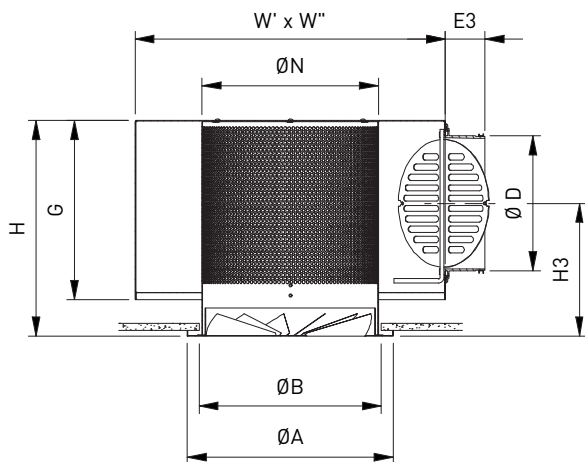
WR200 + WP200T



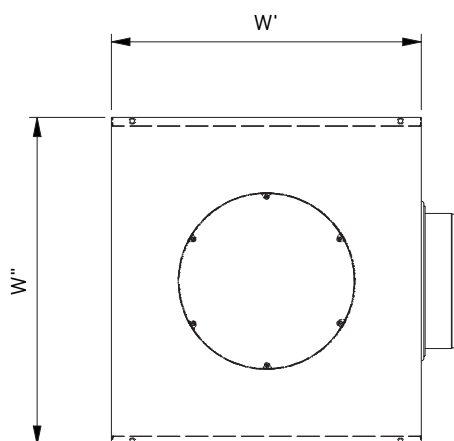
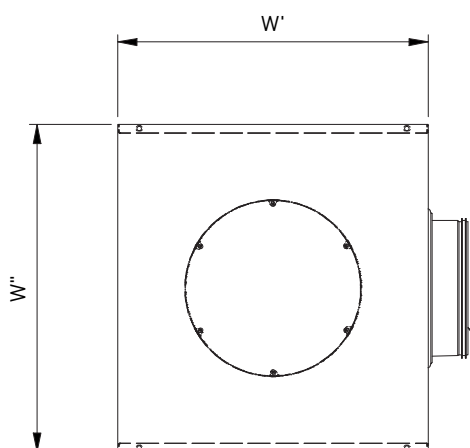
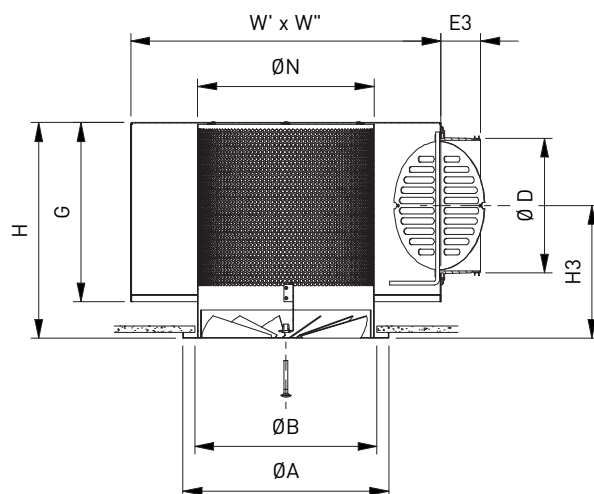
WR210 + WP210T



WR200 + WP200S



WR210 + WP210S

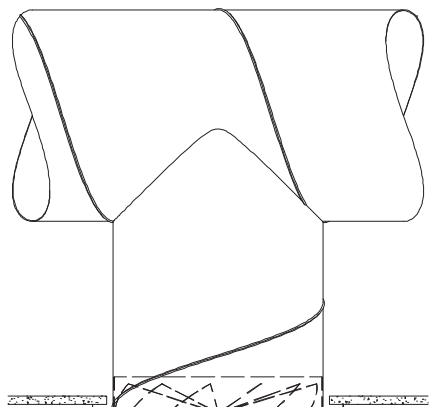


DIMENSIONS

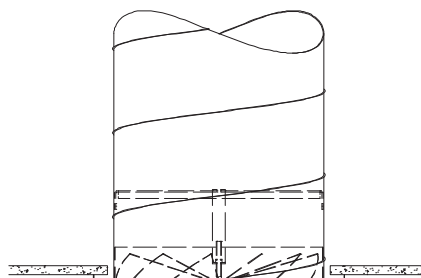
$\varnothing N$	$\varnothing A$	$\varnothing B$	$\varnothing D$	E1	E2	E3	G	H	H2	H3	$W' \times W''$
100	138	110	80	43	-	52	140	190	-	140	200 x 226
125	178	135	100	30	39	52	160	210	127	150	275 x 301
160	198	170	125	36	39	58	185	235	132	153	325 x 351
200	248	210	160	44	39	58	220	270	132	170	375 x 401
250	298	260	200	46	39	58	260	310	137	190	450 x 476
315	363	325	250	41	39	78	310	360	145	215	500 x 526
400	600	410	315	47	40	50	375	425	177	256	600 x 626
500	700	510	400	68	-	50	460	510	-	299	800 x 826

All dimensions in mm

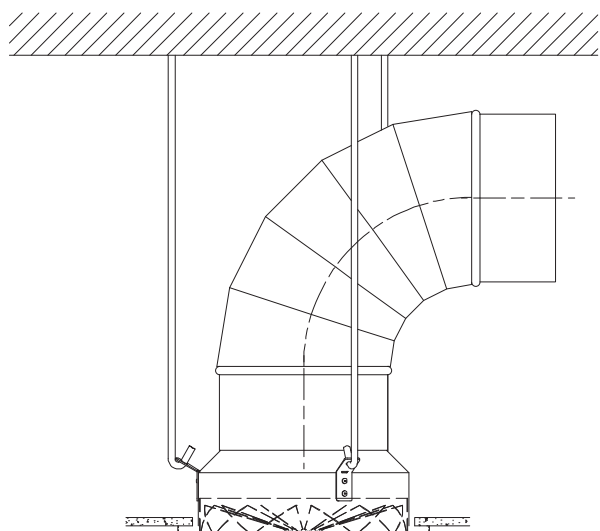
WR200



WR210 + GR003



WR2\*0 + WP2\*0T



WR2\*0 + WP2\*0S

