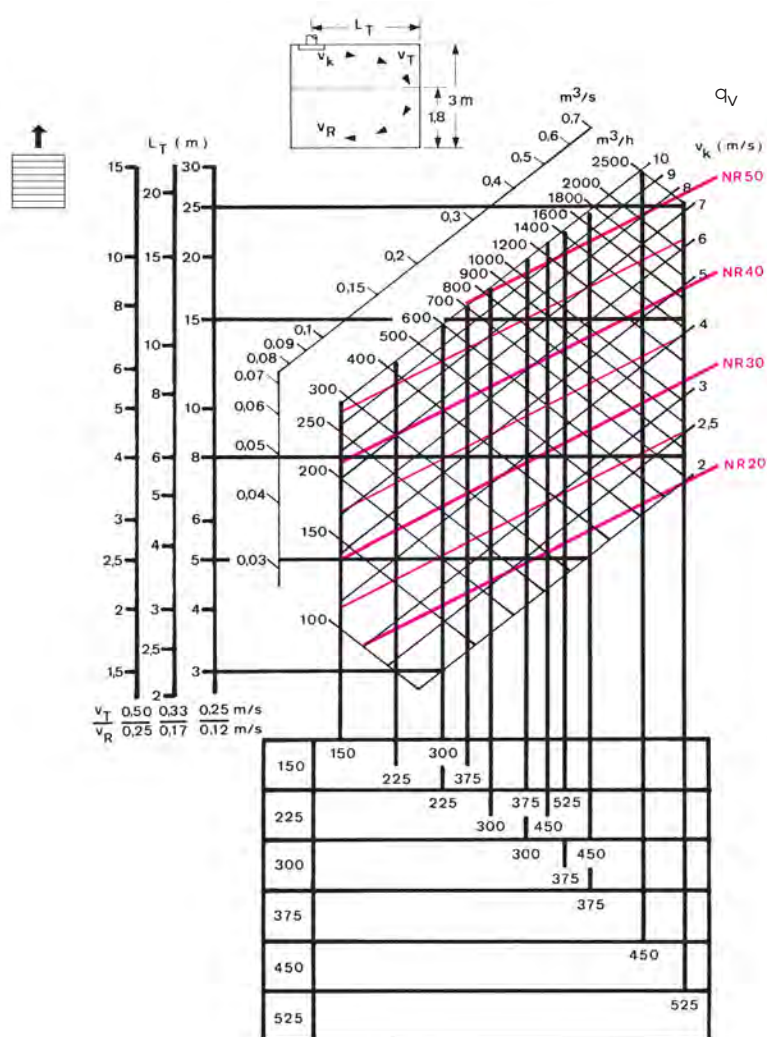


MULTIDIRECTIONAL DIFFUSER EE100

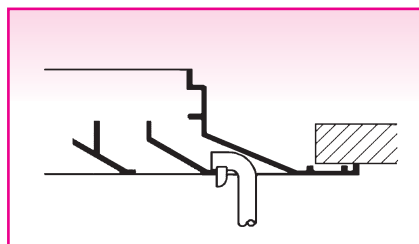
Selection diagram - supply

Type EE100

- with ceiling effect
- damper completely open



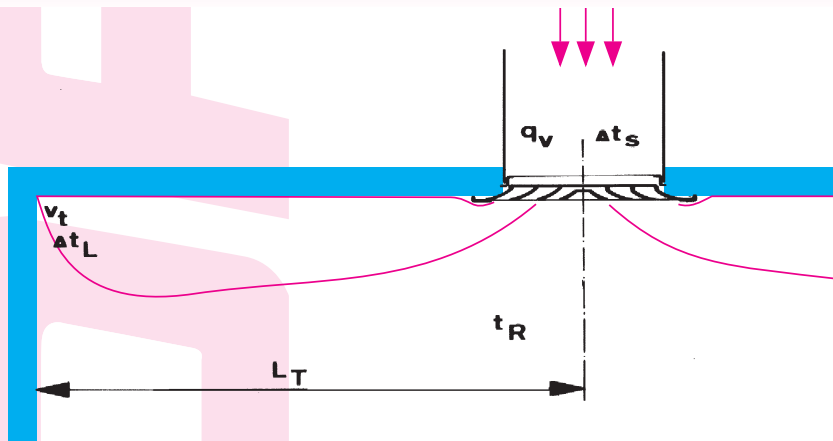
Air flow rate measurement- supply



Velometer jet: 2220 A of 6070

A_k - values (m²)						
H (mm)	L (mm)					
	150	225	300	375	450	525
150	0,008	0,012	0,017	0,020	-	-
225	-	0,017	0,024	0,031	0,036	0,040
300	-	-	0,031	0,040	0,048	-
375	-	-	-	0,048	-	-
450	-	-	-	-	0,071	-
525	-	-	-	-	-	0,097

Example



Selection data:

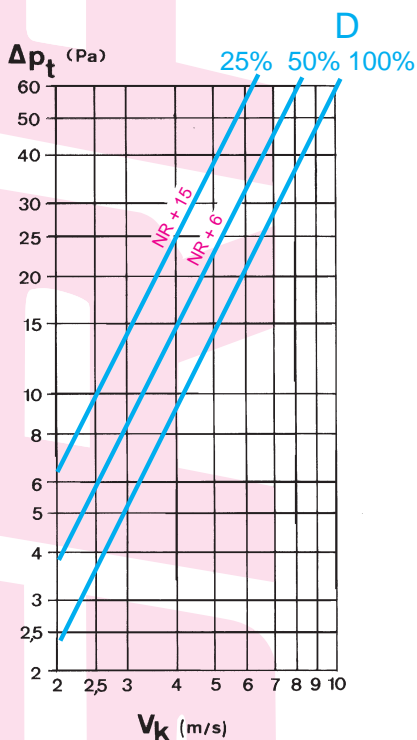
- Air flow rate $q_v = 300 \text{ m}^3/\text{h}$
- Throw $L_T = 4,6 \text{ m}$ at $v_T = 0,33 \text{ m/s}$

Solution:

- EE100 size $300 \times 225 \text{ mm}$
- Supply air velocity $v_k = 3,6 \text{ m/s}$
- Noise level NR 27
- Total pressure loss with damper 100 % open: $\Delta p_t = 7,4 \text{ Pa}$.

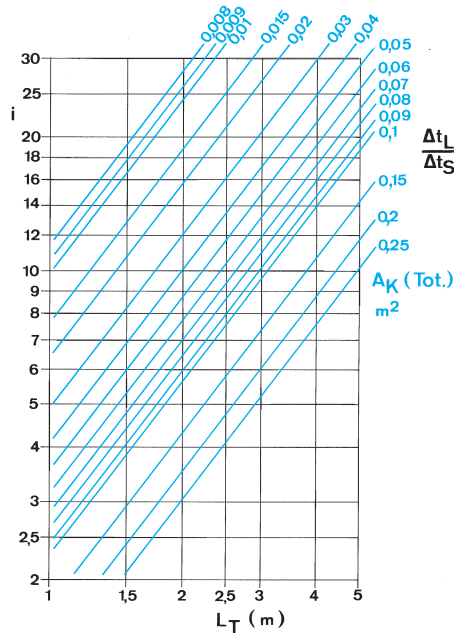
Pressure loss

with damper type ..7



Induction and temperature quotient with ceiling effect

Induction



Correction: $i \times 0,5$; $\Delta t_L \times 2$
 Δt_s

Temperature quotient

