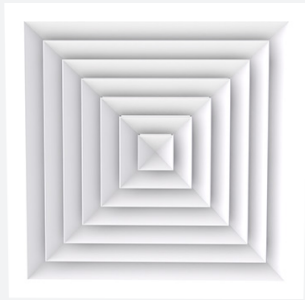
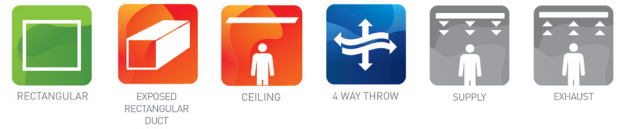


EG400

MULTIDIRECTIONAL DIFFUSER WITH 4 WAY PATTERN



VARIANTS

EG400, EG400P, EG400_S, EG400_T

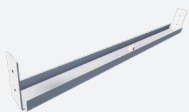
The EG400 diffuser is used for the supply and exhaust of cooled or heated air in facilities such as offices, shopping centres, conference rooms, ... The diffuser has a fixed, 4 way, horizontal air pattern and is equipped with a removable core. Installation with concealed central screw in combination with GR002 bracket for mounting directly onto the duct or in combination with a DP120 plenum equipped with round top- or side entry.

Fixed 4 way horizontal air pattern

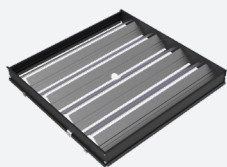
Removable core

Concealed central screw fixing

ACCESSORIES



GR002



DT018



DP120S



DP120T

TECHNICAL INFORMATION

APPLICATION	Type	Supply or exhaust
	Airflow direction	4-way horizontal
CONSTRUCTION	Frontplate	Fixed non-protruding cones, removable core
	Available nominal sizes	150x150, 225x225, 300x300, 375x375, 450x450, 470x470mm
MATERIAL	Standard material	Aluminium
	Standard finishing	Powder coating RAL9010
	Product finishing options	Powder coating RAL of choice
MOUNTING	Mounting options	With concealed central screw

QUICK SELECTION

Q _v [m³/h] Supply	EG400 + DP120-S						
	L _w	150 x 150	225 x 225	300 x 300	375 x 375	450 x 450	470 x 470
25 dB(A)		128	263	324	467	863	920
35 dB(A)		178	392	469	688	1275	1361

PRODUCT KEY

MULTIDIRECTIONAL DIFFUSER WITH 4 WAY PATTERN

E	G	4	0	0	-	F	0	3	0	0	0	3	0	0
							Nominal length N (mm): 150, 225, 300, 375, 450, 470				Nominal width N (mm): 150, 225, 300, 375, 450, 470			
							F: Coated							
							-: Standard							
							-: Without damper							
							8: With opposed blade damper (DT018)							
							G: Concealed central screw fixing and removable core							

MULTIDIRECTIONAL DIFFUSER WITH 4 WAY PATTERN FOR MODULAR T-BAR CEILING SYSTEM

E	G	4	0	0	P	F	0	3	0	0	0	5	9	4
							Nominal size N (mm): 150, 225, 300, 375, 450, 470				Panel size (mm): 594			
							F: Coated							
							P: Integrated in false ceiling plate							
							-: Without damper							
							8: With opposed blade damper (DT018)							
							G: Concealed central screw fixing and removable core							

MOUNTING BRACKET WITH CONCEALED SCREW FIXING

G	R	0	0	2	0	3	0	0	0	3	0	0
						Nominal length N (mm): 150, 225, 300, 375, 450, 470			Nominal width N (mm): 150, 225, 300, 375, 450, 470			

OPPOSED BLADE DAMPER FOR EG400

D	T	0	1	8	0	3	0	0	0	3	0	0
						Nominal length N (mm): 150, 225, 300, 375, 450, 470			Nominal width N (mm): 150, 225, 300, 375, 450, 470			

PLENUM FOR RECTANGULAR CEILING DIFFUSERS

D	P	1	2	0	-	S	-	-	0	0	3	0	0	0	3	0	0	0	3	5	0	0	2	0	0
---	---	---	---	---	---	---	---	---	---	---	---	---	---	---	---	---	---	---	---	---	---	---	---	---	---

	Nominal length N (mm): 150, 225, 300, 375, 450, 470	Nominal width N (mm): 150, 225, 300, 375, 450, 470	Height (mm)	Nominal diameter D (mm): 125, 160, 200, 250, 315
--	--	---	-------------	---

0: Without mounting straps
1: With mounting straps

-: Without damper
D: With damper

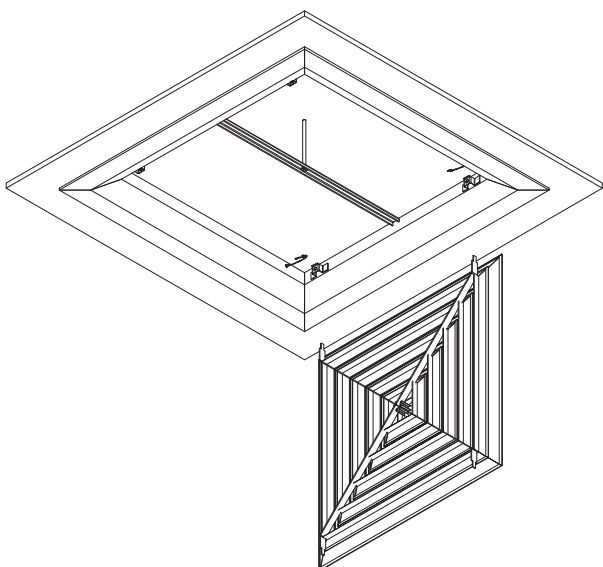
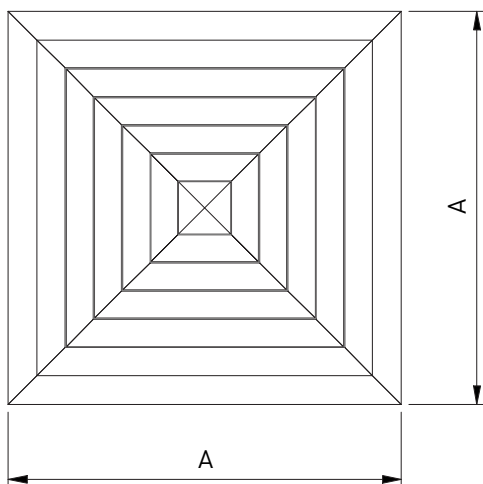
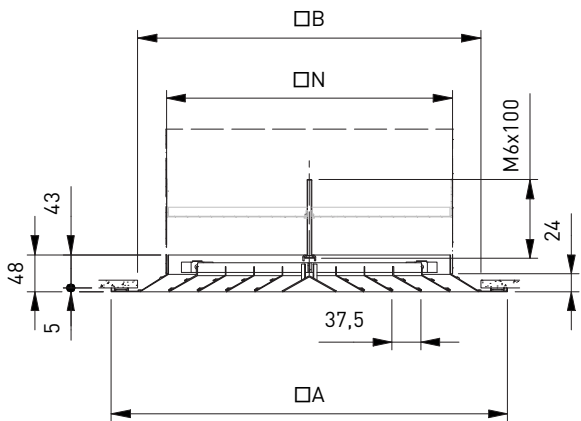
-: Non insulated plenum
G: Insulated plenum

S: Side connection
T: Top connection

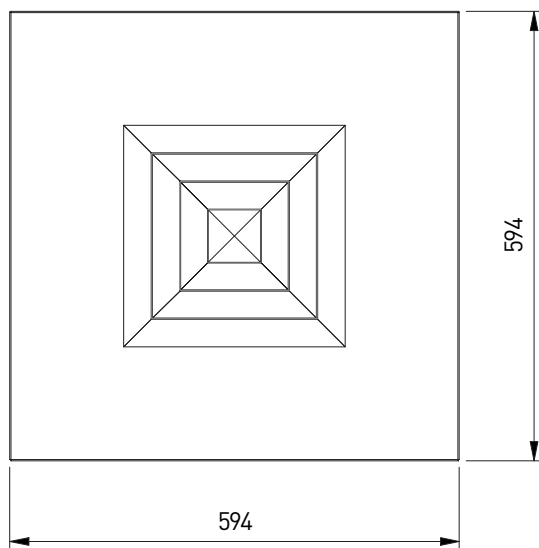
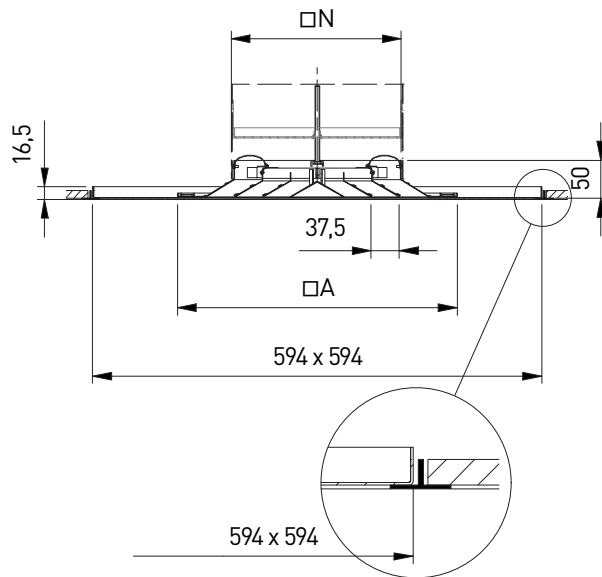
- : Standard version

2: Central screw fixing

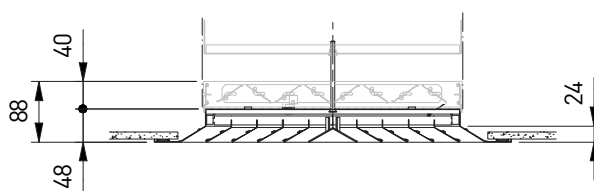
EG400 + GR002



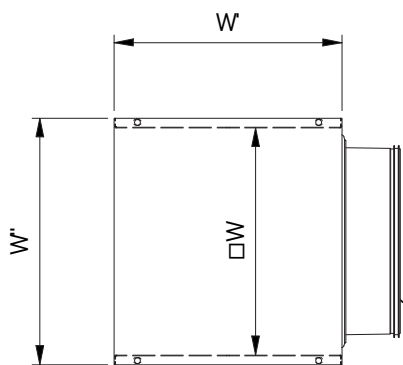
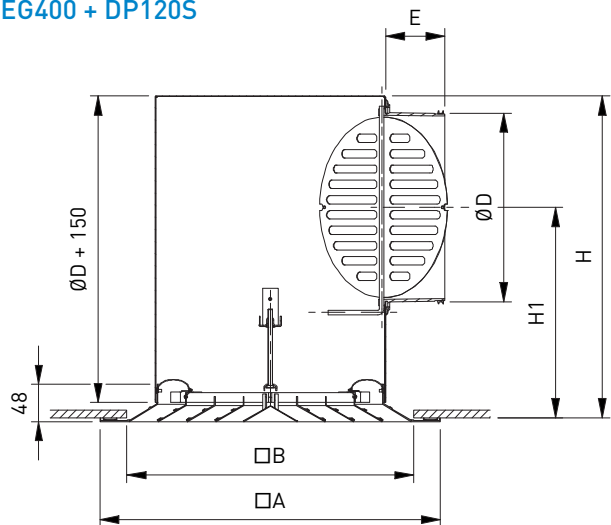
EG400PF + GR002



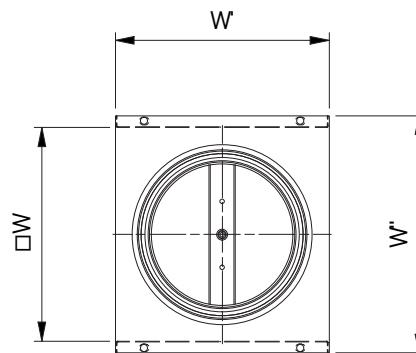
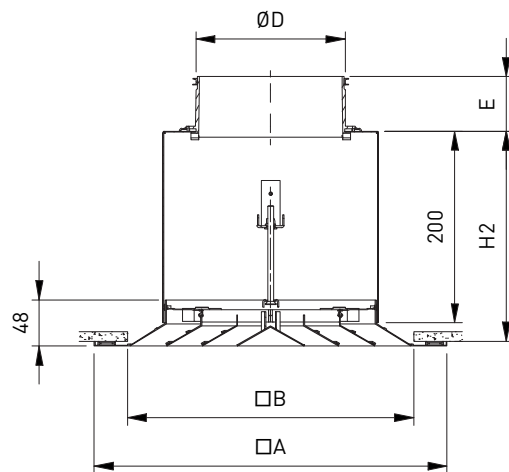
EG400 + DT018 + GR002



EG400 + DP120S

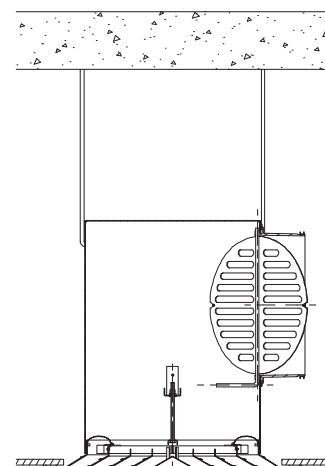


EG400 + DP120T



DIMENSIONS

N	A	B	ØD	E	H	H1	H2	W	W'	W''
150 x 150	295	225	125	58	295	212.5	220	150	150	176
225 x 225	370	300	200	58	370	250	220	225	225	251
300 x 300	445	375	200	58	370	250	220	300	300	326
375 x 375	520	450	315	49	485	316	220	375	375	401
450 x 450	595	525	315	49	485	316	220	450	450	476
470 x 470	615	545	315	49	485	316	220	470	470	496



All dimensions in mm