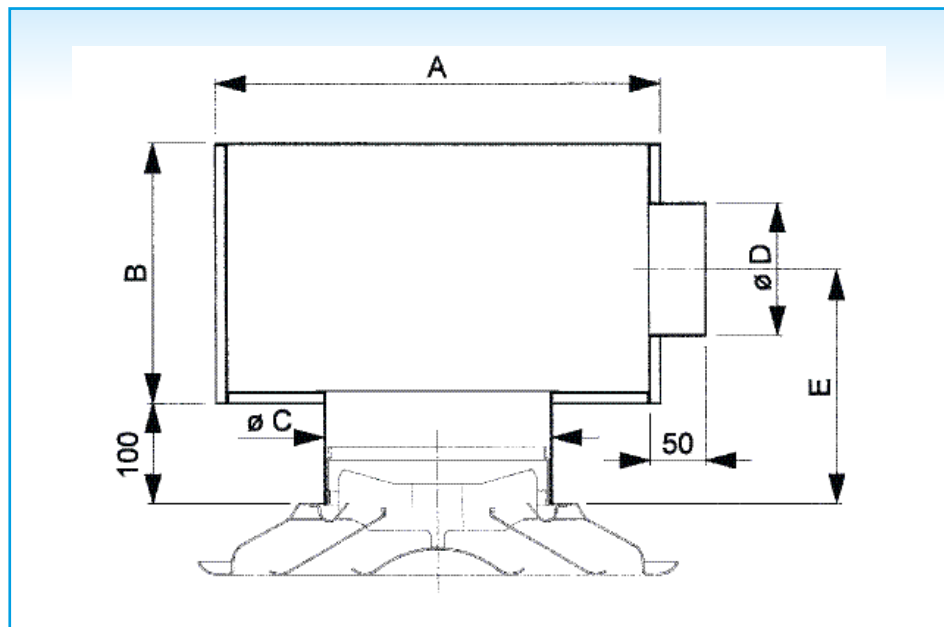


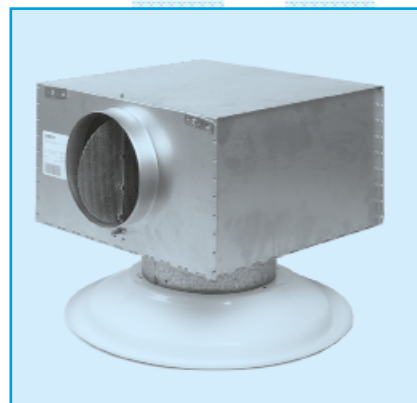
PLENUM BOX FOR CIRCULAR CEILING DIFFUSER DP150S

Installation dimensions



| Size | A | B | Ø C | Ø D | E |
|------|------|-----|-----|-----|-----|
| 160 | 349 | 185 | 160 | 123 | 200 |
| 200 | 399 | 220 | 200 | 158 | 218 |
| 250 | 474 | 260 | 250 | 198 | 238 |
| 315 | 524 | 310 | 315 | 248 | 263 |
| 355 | 524 | 310 | 355 | 248 | 263 |
| 400 | 624 | 375 | 400 | 313 | 296 |
| 450 | 724 | 415 | 450 | 353 | 316 |
| 500 | 824 | 460 | 500 | 398 | 338 |
| 630 | 1024 | 560 | 630 | 498 | 388 |

All dimensions in mm



Application

The plenum DP150S with or without damper in the inlet spigot is used for mounting on diffuser CE100/DE100. The plenum is optional insulation.

Technical information

Characteristics

- circular side entry
- perforated damper possible in the inlet spigot
- plenum can be internally insulated

Construction

provided with mounting eyes (Ø 7 mm), mounting straps available upon request, galvanised steel sheet

Specifications description

Example:

Insulated plenum box for diffuser CE100/DE100 with side entry supplied with damper.
Made out of galvanised steel sheet.

Type: DP151SG
Size ... mm

Delivery possibilities

- **DP150S:** plenum with side entry
- **DP151S:** DP150S with damper
- **DP150SG:** insulated plenum with side entry
- **DP151SG:** DP150SG with damper

How to order

| | | | | | | | | | | | | | | | | |
|---|---|---|---|---|---|---|----------------------------------|---|-------------------------------------------|---|---|---|---|---|---|---|
| D | P | 1 | 5 | 0 | S | G | D | 0 | 0 | 2 | 5 | 0 | 0 | 2 | 5 | 0 |
| | | | | | | | diameter nom. ceiling diff. (mm) | | diameter nom. side connection plenum (mm) | | | | | | | |
| | | | | | | | 0: without mounting straps | | | | | | | | | |
| | | | | | | | 1: with mounting straps | | | | | | | | | |
| | | | | | | | -: without damper | | | | | | | | | |
| | | | | | | | D: with damper | | | | | | | | | |
| | | | | | | | -: non insulated plenum | | | | | | | | | |
| | | | | | | | G: insulated plenum | | | | | | | | | |
| | | | | | | | H: half insulated plenum | | | | | | | | | |
| | | | | | | | S: Side connection | | | | | | | | | |