

WS230

SQUARE SWIRL DIFFUSER WITH
FIXED BLADES AND DIFFUSER RING



VARIANTS

WS230, WS230_S, WS230_T,
WS220, WS220_S, WS220_T

The swirl diffuser type WS230 is equipped with fixed blades. It is designed for surface mounting but is also available in panel sizes to fit modular ceiling systems. A high induction is obtained through the excellent swirl effect. The diffuser ring guarantees a strong coanda effect over a wide temperature range (also at low flow rates) which makes it optimally suited for VAV applications.

Non-adjustable air pattern with fixed blades

High induction with strong coanda effect through diffuser ring

Optimally suited for VAV applications

TECHNICAL INFORMATION

APPLICATION	Type	Supply or exhaust
	Airflow direction	Horizontal
FRONTPLATE	Standard material	Powder coated sheet steel
	Standard finishing	Powder coating RAL9010
	Product finishing options	Powder coating RAL of choice
	Nominal sizes	Ø100, 125, 160, 200, 250, 315, 400, 500mm
	Standard panel sizes	158x158, 198x198, 248x248, 298x298, 398x398, 594x594, 700x700mm
TRANSITION PIECE WP200T/WP210T	Mounting options	WS230 with central screw fixing WS220 without central screw fixing
	Standard material	Brut aluminium
PLENUM WP200S/WP210S	Mounting options	Equipped with mounting straps
	Standard material	Galvanised (275g/m²) sheet steel
	Spigot plenum	PP/TPE spigot, Class D spigot with double lip seal
	Insulation (optional)	Melamine 6mm
	Volume control (optional)	Galvanised perforated volume flow controller with manual operation
PLENUM WP200S/WP210S	Mounting options	Equipped with mounting eyes (Ø 7mm), mounting straps available upon request

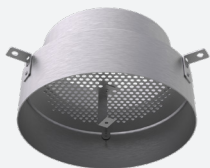
QUICK SELECTION

Supply Q _v [m³/h]				
ØN [mm]	L _w	WS230	WS230 + WP210T	WS230 + WP210S
100	25 dB(A)	37	-	43
	35 dB(A)	54	-	57
125	25 dB(A)	50	53	59
	35 dB(A)	81	77	80
160	25 dB(A)	88	84	107
	35 dB(A)	134	121	146
200	25 dB(A)	137	128	181
	35 dB(A)	203	184	238
250	25 dB(A)	221	214	271
	35 dB(A)	333	302	366
315	25 dB(A)	477	387	412
	35 dB(A)	663	551	563
400	25 dB(A)	747	589	668
	35 dB(A)	1074	834	855
500	25 dB(A)	1044	-	1027
	35 dB(A)	1539	-	1346

ACCESSORIES



WP210S



WP210T



GR003

Supply A _k [m²]	ØN [mm]							
	100	125	160	200	250	315	400	500
	0,0029	0,0046	0,0078	0,0126	0,0203	0,0332	0,0554	0,0893

PRODUCT KEY

SQUARE SWIRL DIFFUSER WITH FIXED BLADES AND DIFFUSER RING (STANDARD SIZE)

W	S	2	3	0	-	F	0	2	5	0
						Nominal size ØN (mm): 100, 125, 160, 200, 250, 315, 400, 500				
						F: Coated				
						2: Without central screw fixing 3: With central screw fixing				

SQUARE SWIRL DIFFUSER WITH FIXED BLADES AND DIFFUSER RING (NON-STANDARD PANEL SIZE)

W	S	2	3	0	-	F	0	2	5	0	0	5	9	4
						Nominal size ØN (mm): 100, 125, 160, 200, 250, 315, 400, 500					Panel size A (mm): 294, 394, 494, 594, 619			
						F: Coated								
						2: Without central screw fixing 3: With central screw fixing								

TRANSITION PIECE WITH PERFORATED PLATE FOR AIR DISTRIBUTION

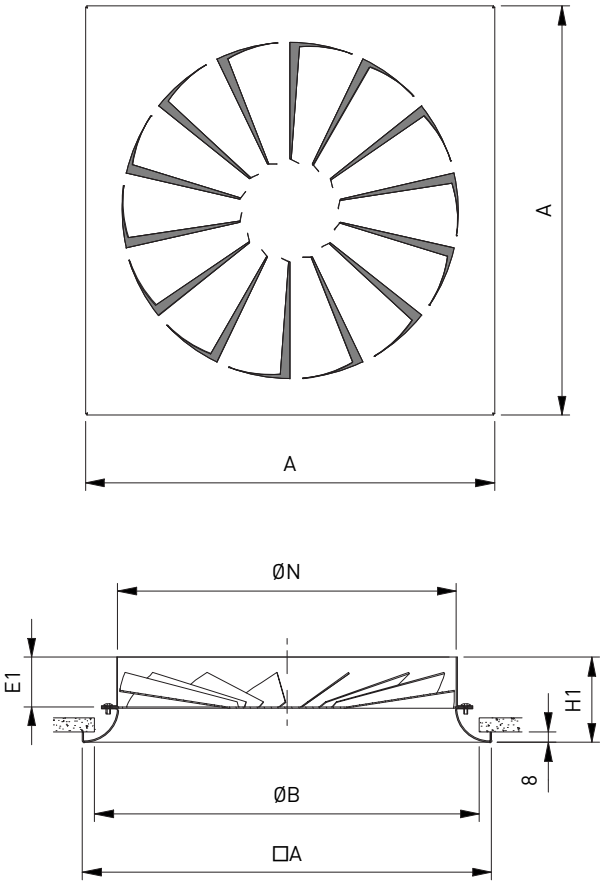
W	P	2	1	0	T	0	2	5	0
						Nominal size ØN (mm): 125, 160, 200, 250, 315, 400			
						0: Without mounting bracket for central screw fixing 1: With mounting bracket for central screw fixing			

PLENUM WITH PERFORATED PLATE FOR AIR DISTRIBUTION FOR SWIRL DIFFUSERS WITH CIRCULAR CONNECTION

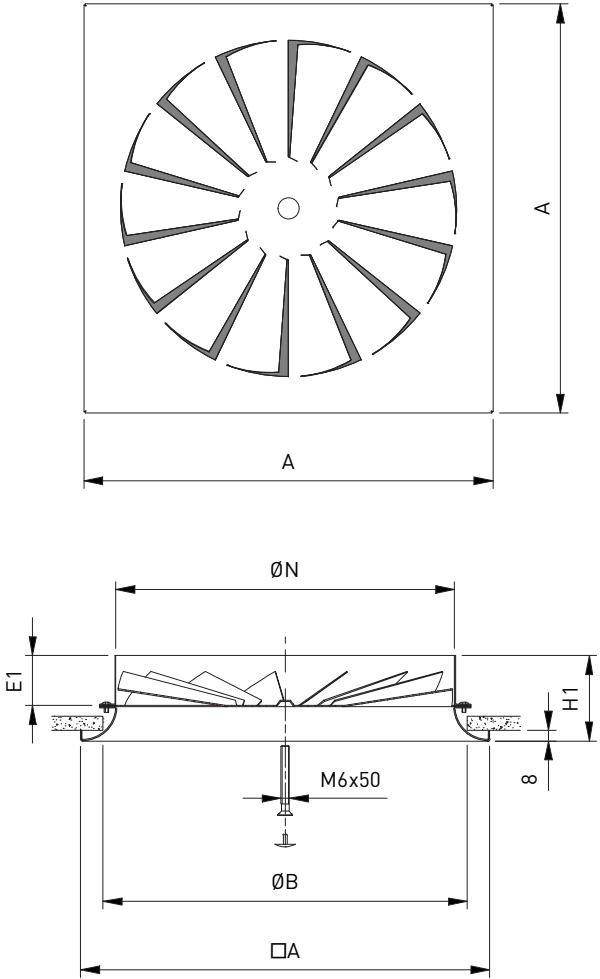
W	P	2	1	0	S	-	-	0	0	2	5	0	0	2	0	0
						Nominal size ØN (mm): 100, 125, 160, 200, 250, 315, 400, 500					Spigot ØD (mm): 80, 100, 125, 160, 200, 250, 315, 400					
						0: Without mounting straps 1: With mounting straps										
						- : Without damper D : With damper										
						-: Non insulated plenum G: Insulated plenum										
						S: Side connection										
						0: Without mounting bracket for central screw fixing 1: With mounting bracket for central screw fixing										

SQUARE SWIRL DIFFUSER WITH FIXED BLADES AND DIFFUSER RING (STANDARD SIZE) AND MOUNTED PLENUM																			
W	S	2	3	0	-	F	S	-	-	0	0	2	5	0	0	2	0	0	
										Nominal size ØN (mm): 100, 125, 160, 200, 250, 315, 400, 500					Spigot ØD (mm): 80, 100, 125, 160, 200, 250, 315, 400				
										0: Without mounting straps 1: With mounting straps									
										- : Without damper D : With damper									
										-: Non insulated plenum G: Insulated plenum									
										S: Side connection									
										F: Coated									
															</				

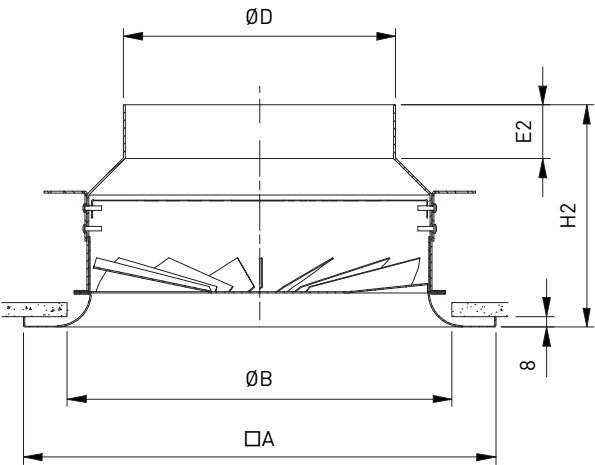
WS220



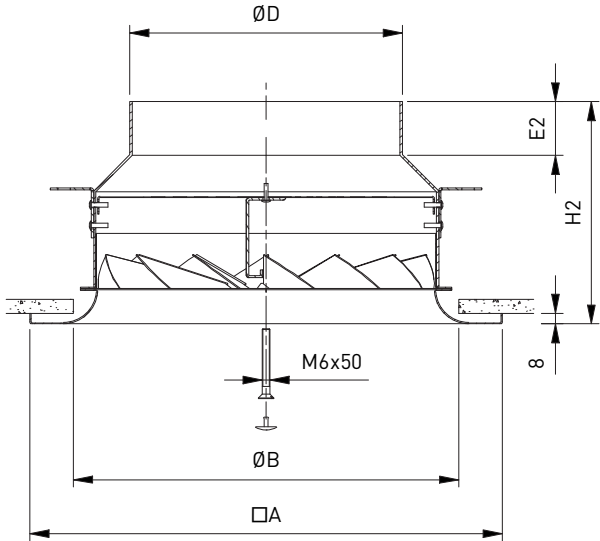
WS230



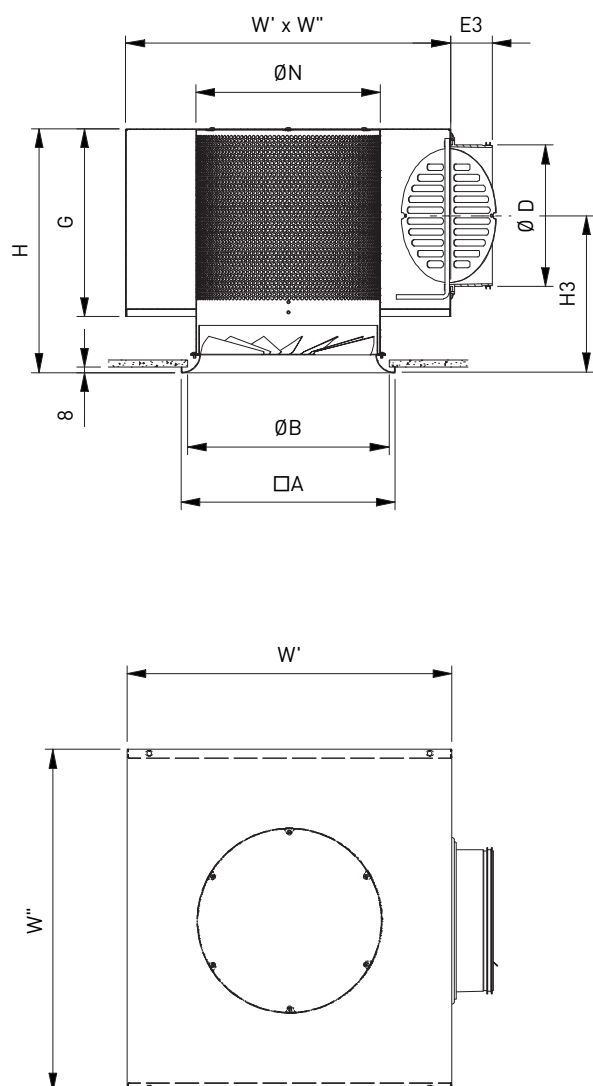
WS220 + WP200T



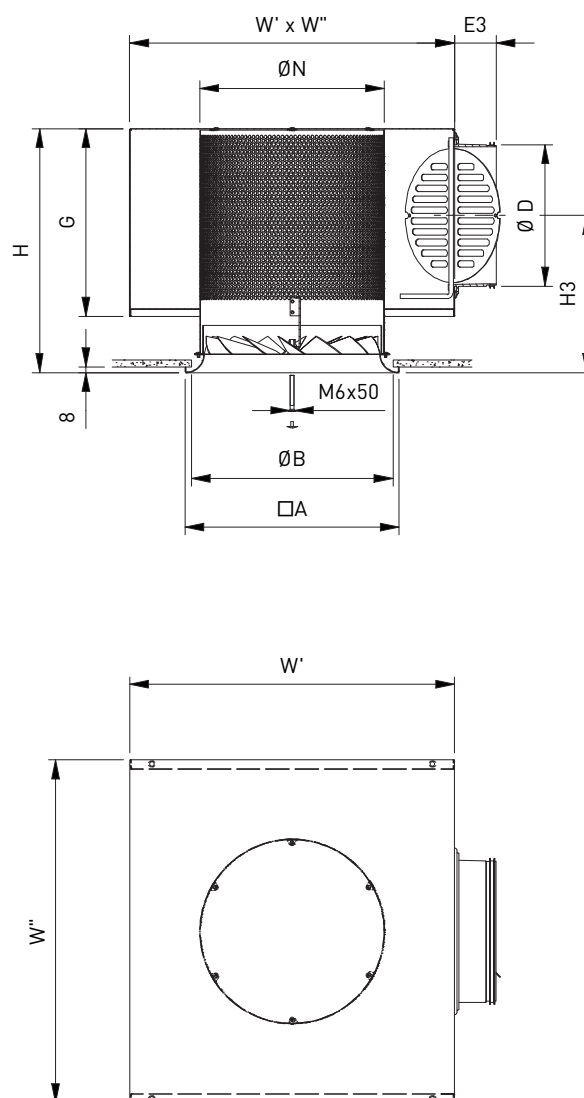
WS230 + WP210T



WS220 + WP200S



WS230 + WP210S

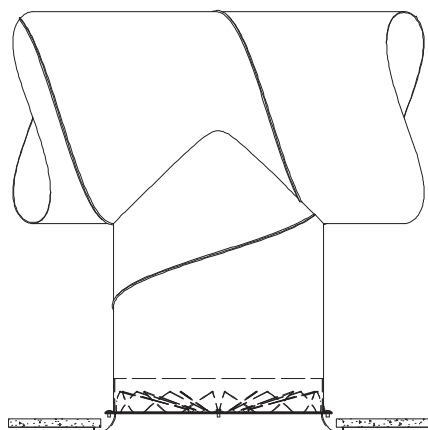


DIMENSIONS

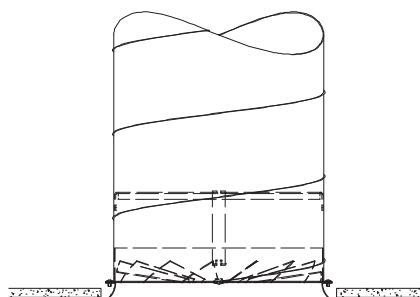
$\varnothing N$	A	$\varnothing B$	$\varnothing D$	E1	E2	E3	G	H	H1	H2	H3	$W' \times W''$
100	158	140	80	43	-	52	140	205	58	-	155	200 x 226
125	198	173	100	29	39	52	160	235	54	176	175	275 x 301
160	248	215	125	35	39	58	185	261	60	182	179	325 x 351
200	248	235	160	43	39	58	220	296	68	182	196	375 x 401
250	298	285	200	45	39	58	260	333	70	183	213	450 x 476
315	398	368	250	50	39	78	310	395	85	202	248	500 x 526
400	594	508	315	47	40	50	375	496	107	237	327	600 x 626
500	700	611	400	68	-	50	460	570	128	-	359	800 x 826

All dimensions in mm

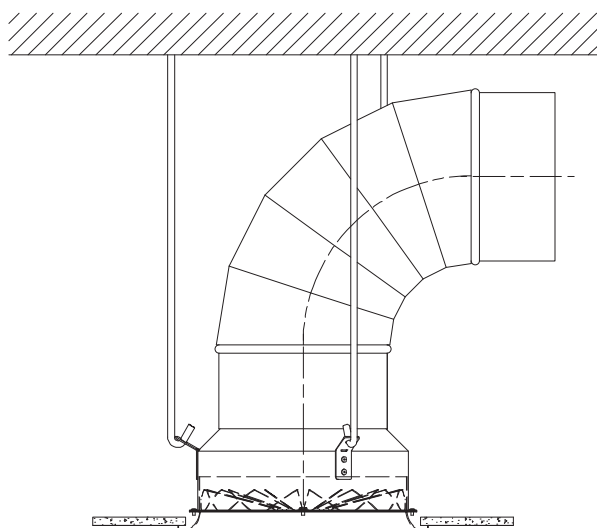
WS220



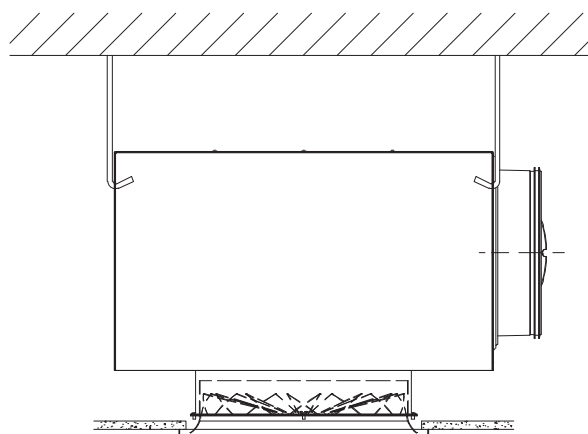
WS230 + GR003



WS2*0 + WP2*0T



WS2*0 + WP2*0S



WS2*0 + WP2*0S

