

G-100

STEEL WALL GRILLE WITH ADJUSTABLE VANES



VARIANTS

G-100, G-110, G-120, G-130

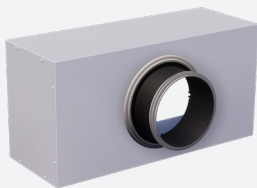
The grille is used for the supply and exhaust of cooled and heated air in facilities such as offices, shopping centres, workshops, ... The grille can be used for wall or exposed duct mounting. It is also possible to mount the grille in the ceiling (exhaust). The vanes can be adjusted manually and individually to obtain an optimal air distribution. Execution in steel, standard finish painted white (RAL9010).

Grille with individually adjustable vanes

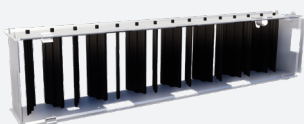
Center distance between vanes 16,7mm

Easy to install

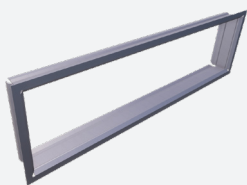
ACCESSORIES



OP100



GT007



GR001



TECHNICAL INFORMATION

APPLICATION

Type	Linear, exhaust or supply
Direction	Horizontal, vertical, adjustable vanes

CONSTRUCTION

Center distance between bars	16,7mm		
Simple deflection, horizontal:	G-100	Intermediate piece: G-100M	End piece: G-100E
Min. length	100mm	100mm	100mm
Max. length	1250mm	1000mm	1250mm
Available steps in length	25mm	100mm	25mm
Min. height	75mm	75mm	75mm
Max. height	900mm	900mm	900mm
Available steps in height	25mm	25mm	25mm
Installation depth	29mm -> 43mm	29mm -> 43mm	29mm -> 43mm
Simple deflection, vertical:	G-120	Intermediate piece: G-120M	End piece: G-120E
Min. length	100mm	100mm	100mm
Max. length	1250mm	1000mm	1250mm
Available steps in length	25mm	100mm	25mm
Min. height	75mm	75mm	75mm
Max. height	625mm	625mm	625mm
Available steps in height	25mm	25mm	25mm
Installation depth	29mm -> 43mm	29mm -> 43mm	29mm -> 43mm
Double deflection:	G-110, G-130	Intermediate piece: G-110M, G-130M	End piece: G-110E, G-130E
Min. length	100mm	100mm	100mm
Max. length	1250mm	1000mm	1250mm
Available steps in length	25mm	100mm	25mm
Min. height	75mm	75mm	75mm
Max. height	625mm	625mm	625mm
Available steps in height	25mm	25mm	25mm
Installation depth	29mm -> 43mm	29mm -> 43mm	29mm -> 43mm

MATERIAL

Standard material	Painted steel
Standard finishing	Powder coating RAL9010
Product finishing options	Powder coating RAL of choice, unpainted galvanised steel

MOUNTING

Mounting options	Friction springs, concealed screw fixing, screw fixing
------------------	--

QUICK SELECTION

Supply Q _v [m³/h]		L [mm]												
H [mm]	L _w	150	200	250	300	400	500	600	700	800	900	1000	1100	1200
100	25 dB(A)	94	131	164	192	263	324	415	506	597	641	684	742	800
	35 dB(A)	128	178	224	263	358	439	567	690	812	873	933	1010	1086
150	25 dB(A)	-	192	263	324	415	517	597	699	800	919	1037	1097	1157
	35 dB(A)	-	263	358	439	567	705	812	949	1086	1247	1408	1493	1578
200	25 dB(A)	-	263	324	415	597	684	800	919	1037	1148	1259	1385	1511
	35 dB(A)	-	358	439	567	812	933	1086	1247	1408	1561	1713	1885	2056
250	25 dB(A)	-	-	-	506	699	861	679	1126	1274	1417	1560	1690	1821
	35 dB(A)	-	-	-	690	949	1171	1332	1532	1732	1928	2125	2303	2481
300	25 dB(A)	-	-	-	597	800	1037	1157	1334	1511	1686	1860	1995	2130
	35 dB(A)	-	-	-	812	1086	1408	1578	1817	2056	2296	2536	2721	2905
350	25 dB(A)	-	-	-	-	919	1148	1334	1510	1686	1899	2113	2279	2446
	35 dB(A)	-	-	-	-	1247	1561	1817	2057	2296	2585	2874	3101	3329
400	25 dB(A)	-	-	-	-	1037	1259	1511	1686	1860	2113	2365	2564	2762
	35 dB(A)	-	-	-	-	1408	1713	2056	2296	2536	2874	3211	3482	3753
450	25 dB(A)	-	-	-	-	-	1385	1686	1899	2112.5	2338	2563.5	2785	3006.5
	35 dB(A)	-	-	-	-	-	1885	2296	2585	2874	3178	3482	3785	4088
500	25 dB(A)	-	-	-	-	-	1511	1860	2113	2365	2564	2762	3007	3251
	35 dB(A)	-	-	-	-	-	2056	2536	2874	3211	3482	3753	4088	4422

PRODUCT KEY

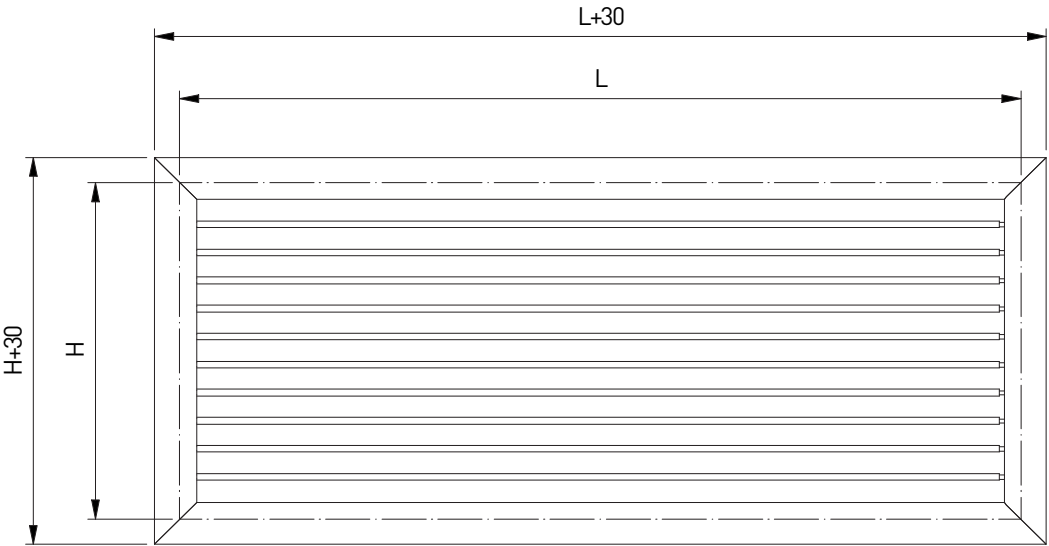
GRILLE

G	D	1	0	0	-	F	0	6	0	0	0	3	0	0
							Nominal length L (mm): From 100 to 1250mm, per 25mm				Nominal height H (mm): From 75 to 900mm, per 25mm			
							-: Galvanised F: Coated							
							-: Grille in one piece E: End piece M: Intermediate piece							
							0: Grille without damper 5: With damper ST005 7: With damper GT007							
							0: Single row horizontal adjustable vanes 1: Front row of horizontal adjustable vanes and back row of vertical adjustable 2: Single row vertical adjustable vanes 3: Front row of vertical adjustable vanes and back row of horizontal adjustable							
							D: Frame width 25mm, friction springs E: Frame width 25mm, concealed screw fixing F: Frame width 25mm, screw fixing X: Frame width 25mm, without fixing							

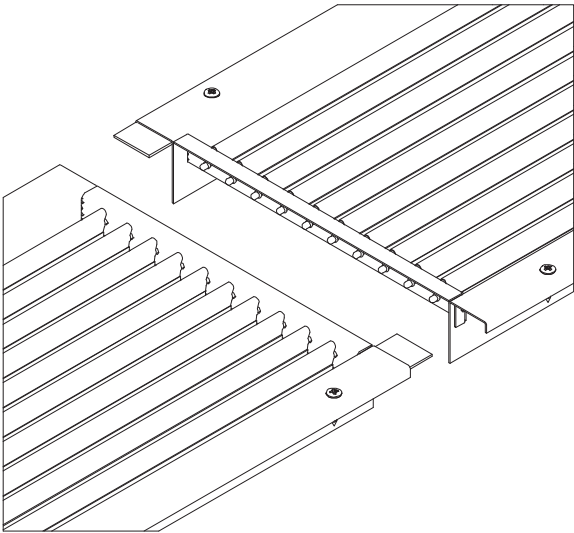
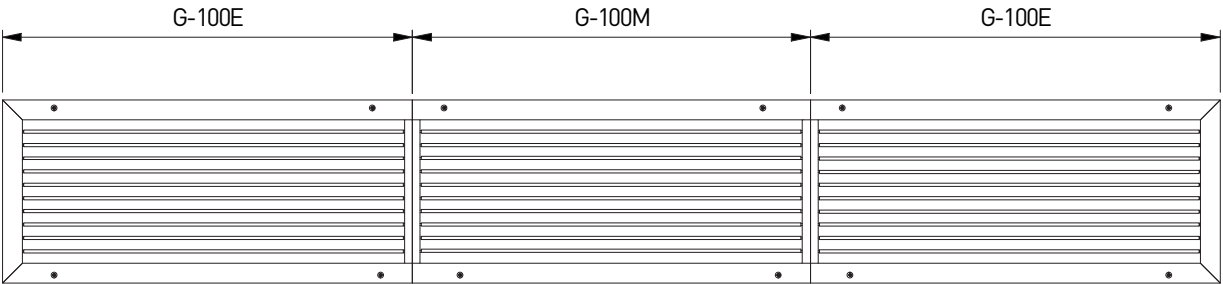
- If vertical vanes are present: height \leq 625mm
- If single row horizontal vanes and GT007: height \leq 600mm
- Length intermediate piece from 100 to 1000mm, steps 100mm
- GT007 only available for heights from 100 to 600mm, per 25mm

MOUNTING FRAME

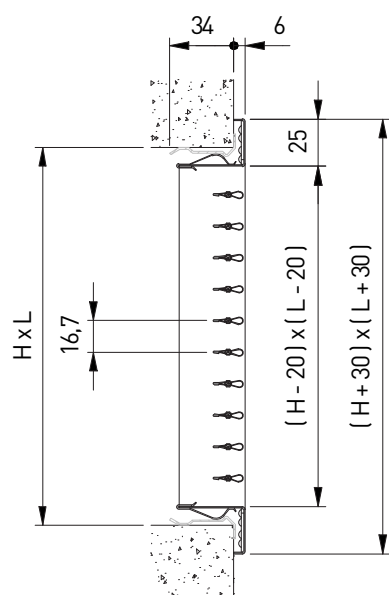
DRAWING CODE													
G	R	0	0	1	-	0	6	0	0	0	3	0	0
						Nominal length L (mm): From 75 to 2000mm, per 1mm				Nominal height H (mm): From 50 to 2000mm, per 1mm			
						-: In one piece E: End piece M: Intermediate piece							



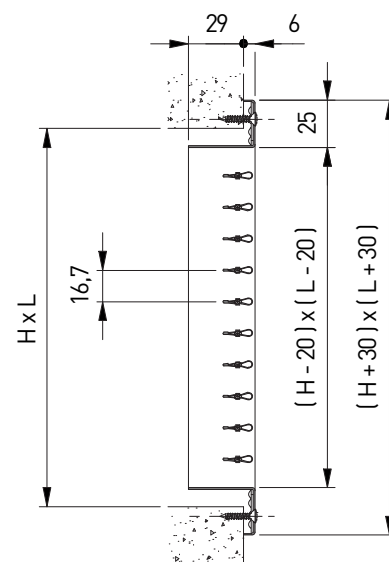
LINEAR: END PIECES AND INTERMEDIATE PIECES



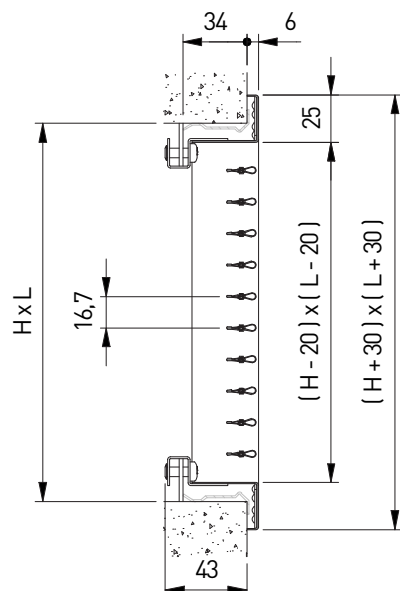
GD100 + GR001



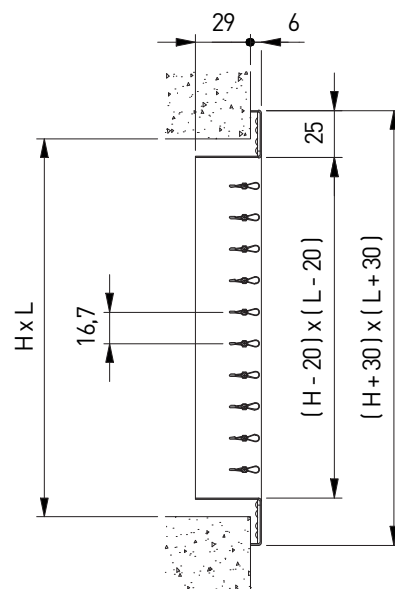
GF100



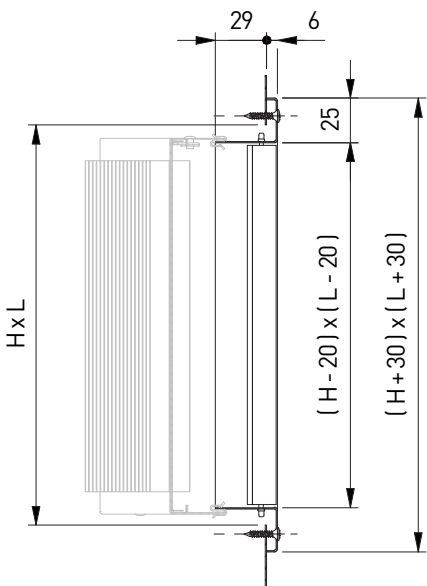
GE100 + GR001



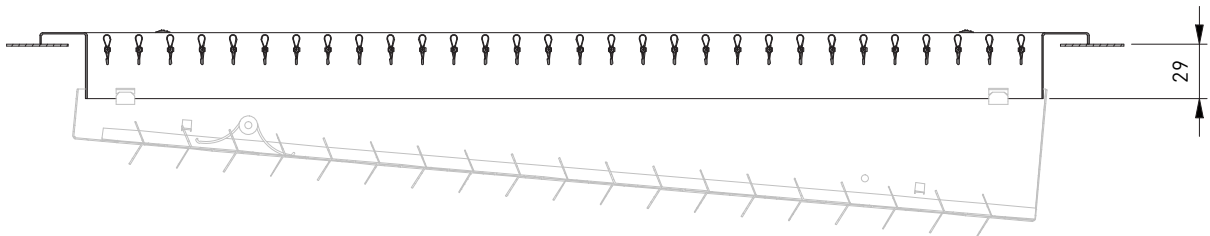
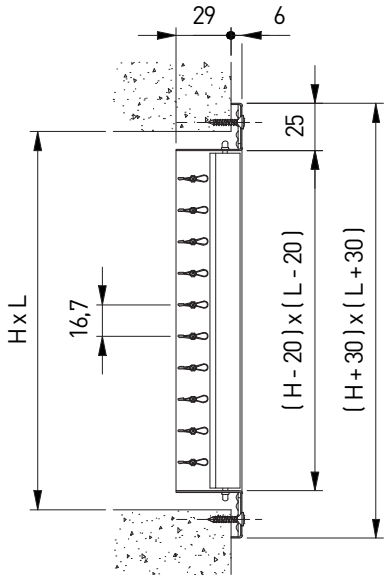
GX100



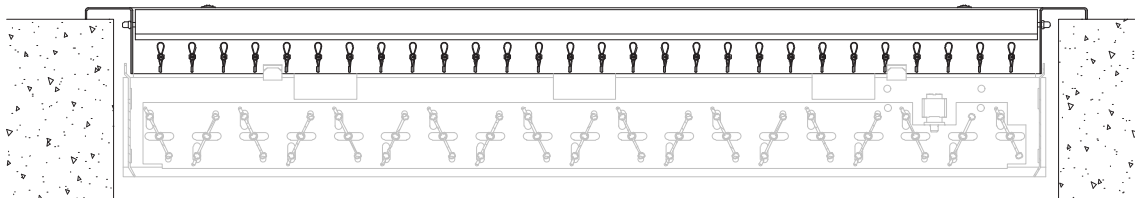
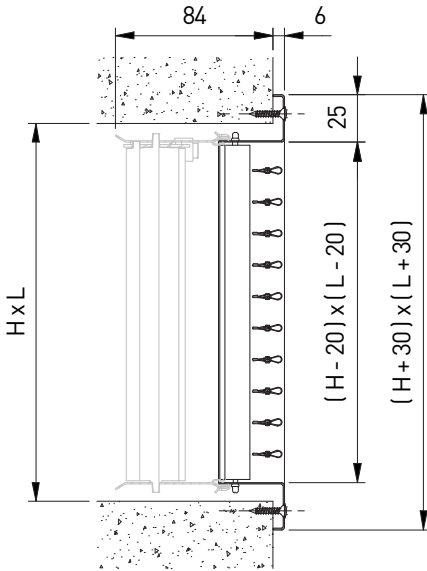
GF125



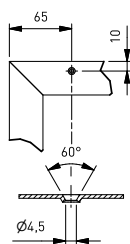
GF130



GF117



SCREW HOLE LOCATION IN THE FRAME



	Nom.L 150	525	1025	1500	2000
Nom. H 150					
525					
1000					