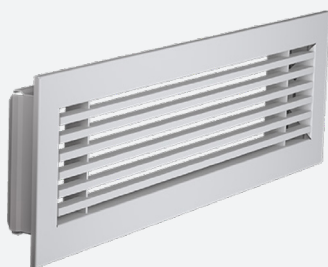


B-600

ALUMINIUM/STEEL BAR GRILLE FOR WALL MOUNTING



VARIANTS

B-600, B-620, B-640, A-660

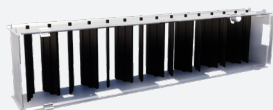
Bar grille, suitable for the supply and exhaust of cooled or heated air, with straight bars or with 15° deflection. The grille is suitable for wall mounting. Multiple mounting options are available. Economical solution with bars in aluminium and frame in steel, standard finish painted white (RAL9010).

Architectural finish

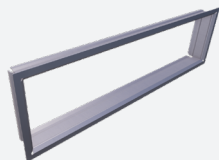
Fixed bars, center distance between bars
12,5mm or 16 2/3mm

Easy to install

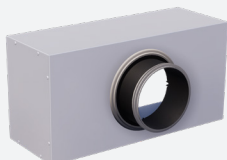
ACCESSORIES



GT07



GR001



OP100



TECHNICAL INFORMATION

| | | |
|--------------|------------------------------------------|------------------------------------------|
| APPLICATION | Type | Exhaust or supply |
| | Direction | Horizontal, fixed bars |
| CONSTRUCTION | Center distance between bars | 12,5mm or 16 2/3mm |
| | Thickness of frame | 5mm |
| | Available in 47 different standard sizes | 200x100mm -> 1500x300mm |
| | Installation depth | 34mm -> 43mm |
| MATERIAL | Standard material: Barres | Painted aluminium |
| | Standard material: Frame | Painted steel |
| | Standard finishing | Powder coating RAL9010 |
| | Product finishing options | Powder coating RAL of choice |
| MOUNTING | Mounting options | Friction springs, concealed screw fixing |

QUICK SELECTION

| Supply/Exhaust Q_v [m ³ /h] | | L [mm] | | | | | | | | | |
|---------------------------------------------|----------|--------|-----|-----|-----|-----|------|------|------|------|------|
| H [mm] | L_w | 200 | 250 | 300 | 400 | 500 | 600 | 800 | 1000 | 1200 | 1500 |
| 100 | 25 dB(A) | 90 | 110 | 129 | 166 | 201 | 233 | 293 | 347 | 398 | 469 |
| | 35 dB(A) | 146 | 179 | 211 | 271 | 327 | 380 | 477 | 566 | 649 | 765 |
| 150 | 25 dB(A) | 132 | 162 | 191 | 245 | 296 | 343 | 432 | 512 | 587 | 692 |
| | 35 dB(A) | 216 | 265 | 312 | 400 | 483 | 561 | 705 | 837 | 959 | 1130 |
| 200 | 25 dB(A) | 174 | 213 | 250 | 321 | 388 | 450 | 566 | 671 | 769 | 906 |
| | 35 dB(A) | 284 | 348 | 410 | 526 | 635 | 738 | 927 | 1099 | 1260 | 1484 |
| 250 | 25 dB(A) | - | 263 | 310 | 398 | 480 | 557 | 700 | 830 | 951 | 1120 |
| | 35 dB(A) | - | 432 | 509 | 653 | 788 | 915 | 1149 | 1362 | 1561 | 1839 |
| 300 | 25 dB(A) | - | - | 370 | 476 | 574 | 666 | 836 | 991 | 1136 | 1337 |
| | 35 dB(A) | - | - | 609 | 782 | 944 | 1096 | 1376 | 1631 | 1868 | 2200 |

EFFECTIVE AIR DISCHARGE AREA

| Supply/Exhaust A_f [m ²] | | L [mm] | | | | | | | | | |
|-------------------------------------------|--|--------|--------|--------|--------|--------|--------|--------|--------|--------|--------|
| H [mm] | | 200 | 250 | 300 | 400 | 500 | 600 | 800 | 1000 | 1200 | 1500 |
| 100 | | 0.0087 | 0.0109 | 0.0131 | 0.0175 | 0.0218 | 0.0262 | 0.0349 | 0.0437 | 0.0524 | 0.0654 |
| 150 | | 0.0143 | 0.0178 | 0.0214 | 0.0285 | 0.0356 | 0.0428 | 0.0570 | 0.0713 | 0.0855 | 0.1064 |
| 200 | | 0.0198 | 0.0247 | 0.0297 | 0.0395 | 0.0494 | 0.0593 | 0.0791 | 0.0988 | 0.1186 | 0.1493 |
| 250 | | - | 0.0316 | 0.0379 | 0.0506 | 0.0632 | 0.0759 | 0.1011 | 0.1264 | 0.1517 | 0.1887 |
| 300 | | - | - | 0.0462 | 0.0616 | 0.0770 | 0.0924 | 0.1232 | 0.1540 | 0.1848 | 0.2326 |

PRODUCT KEY

GRILLE

| | | | | | | | | | | | | | | |
|---|---|---|---|---|---|---|---|---|---|---|---|---|---|---|
| B | D | 6 | 0 | 0 | - | F | 0 | 6 | 0 | 0 | 0 | 3 | 0 | 0 |
|---|---|---|---|---|---|---|---|---|---|---|---|---|---|---|

Nominal length L (mm):
From 150 to 2000mm, per 25mm

Nominal height H (mm):
From 100 to 1000mm, per 25mm

F: Coated

--: Grille in one piece

0: Grille without damper

- 0: Step 12.5mm, deflection 0°, no flow equalizer
- 2: Step 12.5mm, deflection 15°, no flow equalizer
- 4: Step 16 2/3mm, deflection 0°, no flow equalizer
- 6: Step 16 2/3mm, deflection 15°, no flow equalizer

D: Frame width 25mm, friction spring fixing
E: Frame width 25mm, concealed screw fixing

MOUNTING FRAME

| | | | | | | | | | | | | | |
|---|---|---|---|---|---|---|---|---|---|---|---|---|---|
| G | R | 0 | 0 | 1 | - | 0 | 6 | 0 | 0 | 0 | 3 | 0 | 0 |
|---|---|---|---|---|---|---|---|---|---|---|---|---|---|

Nominal length L (mm):
From 75 to 2000mm, per 1mm

Nominal height H (mm):
From 50 to 2000mm, per 1mm

--: In one piece

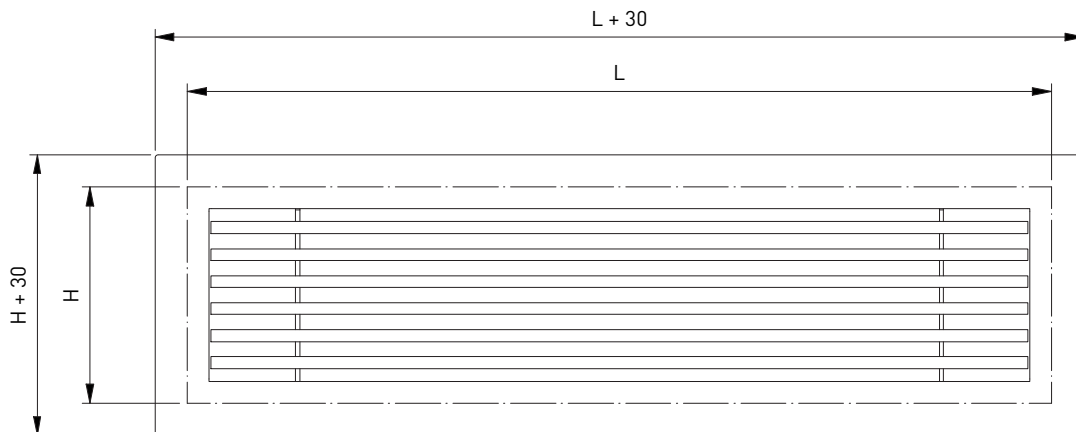
OPPOSED BLADE DAMPER

| | | | | | | | | | | | | |
|---|---|---|---|---|---|---|---|---|---|---|---|---|
| G | T | 0 | 0 | 7 | 0 | 6 | 0 | 0 | 0 | 3 | 0 | 0 |
|---|---|---|---|---|---|---|---|---|---|---|---|---|

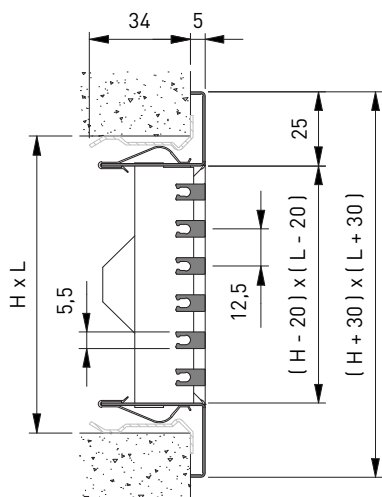
Nominal length L (mm):
From 100 to 625mm, per 25mm

Nominal height H (mm):
From 75 to 600mm, per 25mm

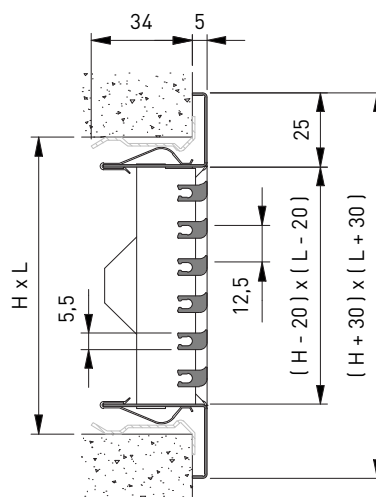
B-600



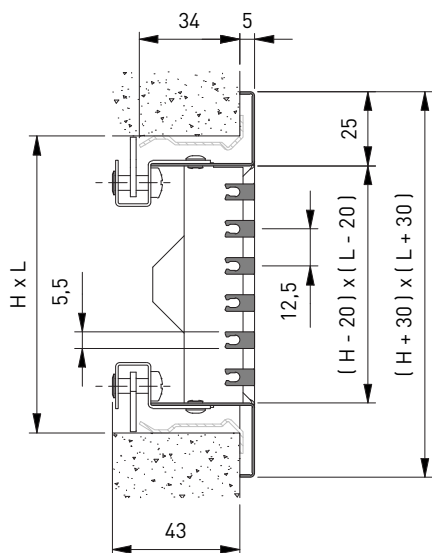
BD600 + GR001



BD620 + GR001



BE600 + GR001



BD640 + GR001

