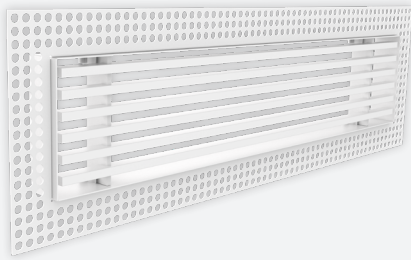


BI600

STUCCO ALUMINIUM/STEEL BAR GRILLE FOR WALL MOUNTING



VARIANTS

BI600, BI610, BI620, BI630, BI640, BI650, BI660, BI670,

Stucco bar grille with plasterkit for frameless embedding in walls. The core is mounted on clips and easily removable to allow cleaning of air ducts. Suitable for the supply and exhaust of cooled or heated air, with straight bars or with 15° deflection. Bars in aluminium and frame in steel, standard finish painted white (RAL9010).

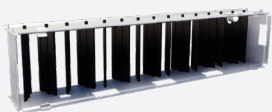
Architectural finish

Fixed bars, center distance between bars 12,5mm or 16 2/3mm

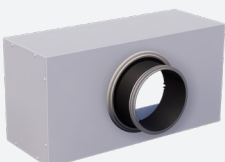
Removable core

Plasterkit

ACCESSORIES



GT007



OP100

TECHNICAL INFORMATION

APPLICATION	Type	Exhaust or supply
	Direction	Horizontal, fixed bars
CONSTRUCTION	Center distance between bars	12,5mm or 16 2/3mm
	Thickness of frame	5mm
	Min. length	150mm
	Max. length	2000mm
	Available steps in length	25mm
	Min. height	100mm
	Max. height	1000mm
MATERIAL	Available steps in height	25mm
	Installation depth	29mm -> 45mm
	Standard material: Bars	Painted aluminium
	Standard material: Frame	Painted steel
MOUNTING	Standard finishing	Powder coating RAL9010
	Product finishing options	Powder coating RAL of choice
	Mounting options	Frameless, plasterkit for embedding

QUICK SELECTION

Supply/Exhaust Q _v [m³/h]		L [mm]									
H [mm]	Lw	200	250	300	400	500	600	800	1000	1200	1500
100	25 dB(A)	90	110	129	166	201	233	293	347	398	469
	35 dB(A)	146	179	211	271	327	380	477	566	649	765
150	25 dB(A)	132	162	191	245	296	343	432	512	587	692
	35 dB(A)	216	265	312	400	483	561	705	837	959	1130
200	25 dB(A)	174	213	250	321	388	450	566	671	769	906
	35 dB(A)	284	348	410	526	635	738	927	1099	1260	1484
250	25 dB(A)	-	263	310	398	480	557	700	830	951	1120
	35 dB(A)	-	432	509	653	788	915	1149	1362	1561	1839
300	25 dB(A)	-	-	370	476	574	666	836	991	1136	1337
	35 dB(A)	-	-	609	782	944	1096	1376	1631	1868	2200

EFFECTIVE AIR DISCHARGE AREA

Supply/Exhaust Af [m²]		L [mm]									
H [mm]		200	250	300	400	500	600	800	1000	1200	1500
100		0.0087	0.0109	0.0131	0.0175	0.0218	0.0262	0.0349	0.0437	0.0524	0.0654
150		0.0143	0.0178	0.0214	0.0285	0.0356	0.0428	0.0570	0.0713	0.0855	0.1064
200		0.0198	0.0247	0.0297	0.0395	0.0494	0.0593	0.0791	0.0988	0.1186	0.1493
250		-	0.0316	0.0379	0.0506	0.0632	0.0759	0.1011	0.1264	0.1517	0.1887
300		-	-	0.0462	0.0616	0.0770	0.0924	0.1232	0.1540	0.1848	0.2326

PRODUCT KEY

GRILLE

B	D	6	0	0	-	F	0	6	0	0	0	3	0	0
---	---	---	---	---	---	---	---	---	---	---	---	---	---	---

Nominal length L (mm):
From 150 to 2000mm, per
25mm

Nominal height H (mm):
From 100 to 1000mm, per
25mm

F: Coated

-: Grille in one piece

0: Grille without damper
7: With damper GT007

- 0: Step 12.5mm, deflection 0°, no flow equalizer
- 1: Step 12.5mm, deflection 0°, with flow equalizer
- 2: Step 12.5mm, deflection 15°, no flow equalizer
- 3: Step 12.5mm, deflection 15°, with flow equalizer
- 4: Step 16 2/3mm, deflection 0°, no flow equalizer
- 5: Step 16 2/3mm, deflection 0°, with flow equalizer
- 6: Step 16 2/3mm, deflection 15°, no flow equalizer
- 7: Step 16 2/3mm, deflection 15°, with flow equalizer

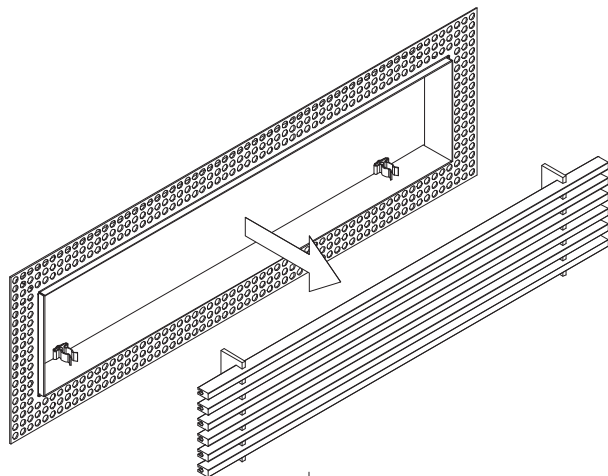
I: Frameless, plasterkit for embedding

OPPOSED BLADE DAMPER

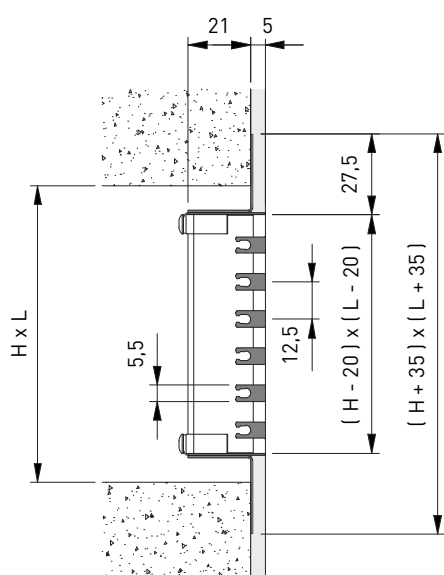
G	T	0	0	7	0	6	0	0	0	3	0	0
---	---	---	---	---	---	---	---	---	---	---	---	---

Nominal length L (mm):
From 100 to 625mm,
per 25mm

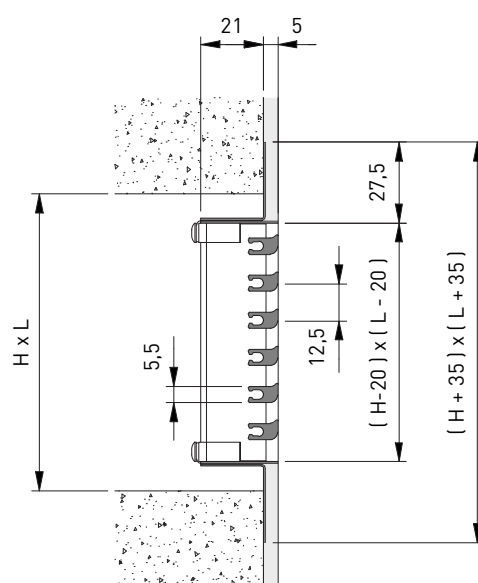
Nominal height H (mm):
From 75 to 600mm,
per 25mm



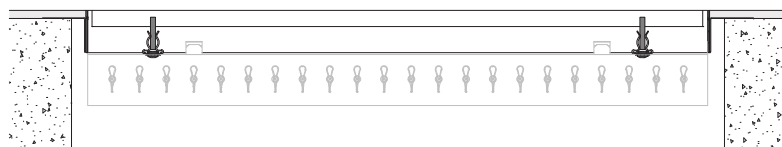
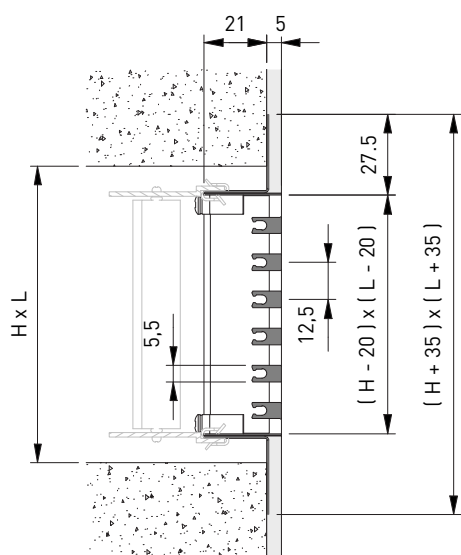
BI600



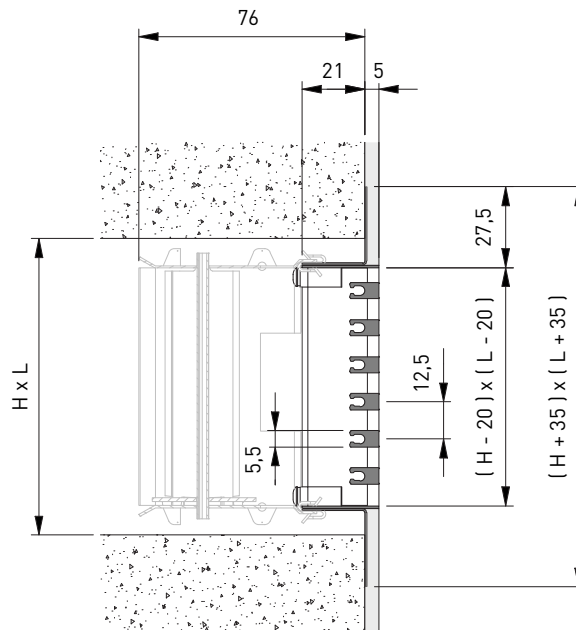
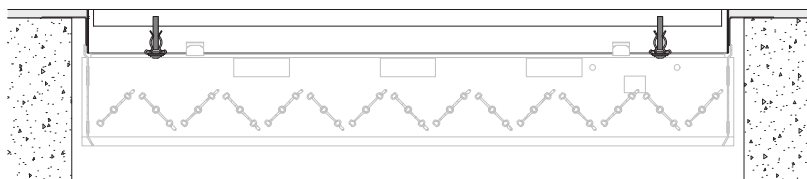
BI620



BI610



BI607



BI637

